

A photograph of five Cleanaway staff members standing in front of a white Cleanaway truck. The staff are wearing high-visibility vests and hard hats. The truck has the Cleanaway logo and the number "131339" on its side. The background is a blurred industrial setting.

Western Extension Project | September 2025

Lucas Heights Resource Recovery Park

Cleanaway Lucas Heights Resource Recovery Park is a drop-off and disposal site. We provide drop off for pre-sorted loads of paper and cardboard, steel and scrap metals, limited quantities of sump oil, vehicle batteries. This site also houses the Lucas Heights Organic Resource Recovery Facility, which collects and pre-processes garden organic material for recycling into compost.

Why do we need the Western Extension Project?

As the only putrescible landfill site in the Sydney basin, an extension of the Lucas Heights facility is crucial to the management of NSW's looming landfill shortage. According to the NSW Government's Waste and Sustainable Materials Strategy 2041 [NSW Waste and Sustainable Materials Strategy 2041](#), available landfill in NSW is forecast to be at capacity by 2030. While the Strategy includes plans for responsibly reducing, reusing, repairing and recycling the waste we generate, according to the NSW Government, we still need additional landfill capacity.

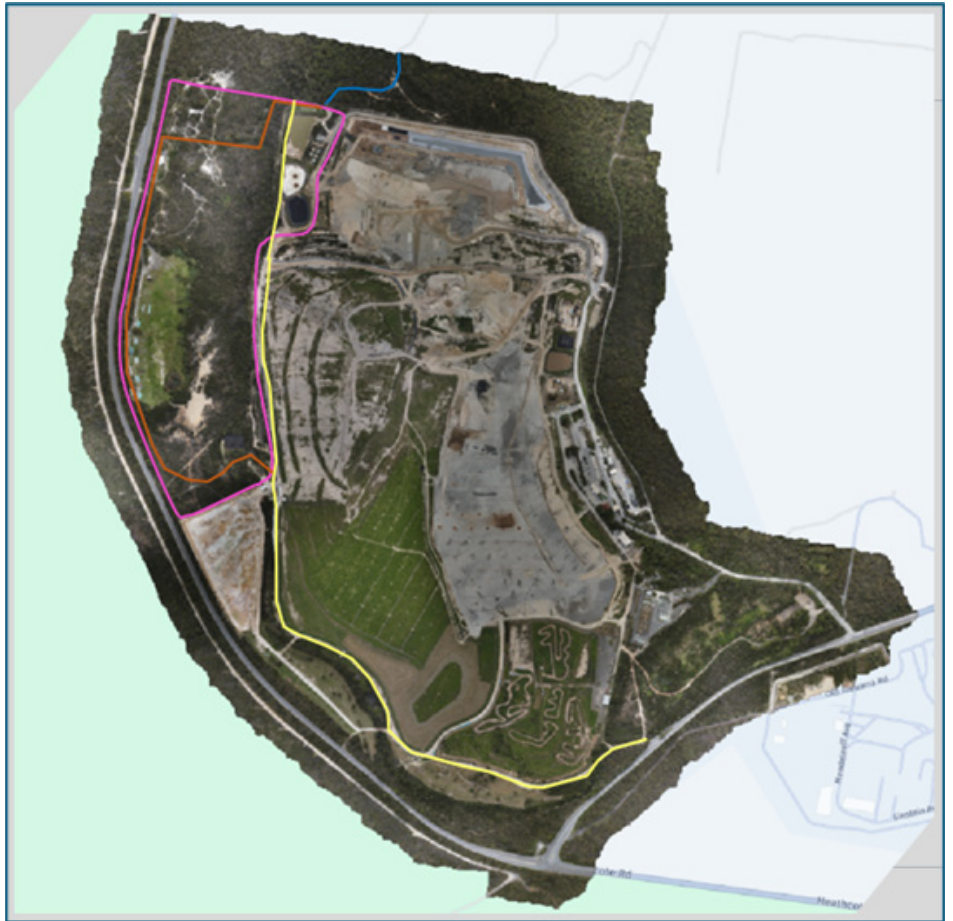
Cleanaway's Lucas Heights landfill is projected to reach capacity by 2030, prompting the proposed Western Extension Project at Lucas Heights Resource Recovery Park. Once approved, this extension will enable Cleanaway to process up to 970,000 tonnes of Sydney's red bin waste annually until at least 2046, with operations beginning in 2031.





What will the Western Extension Project involve?

Cleanaway is aiming to extend its existing Lucas Heights Resource Recovery Park landfill, providing much-needed additional capacity and associated critical waste infrastructure by expanding the landfill area to the west. This work will include remediation of the land to the west and a permanent realignment of the Mill Creek Storm Water Channel.

The project will uphold current environmental controls, continue generating electricity for about 25,000 homes through methane collection and renewable energy systems and create employment opportunities.

In December 2024, the NSW Government issued the Secretary's Environmental Assessment Requirements (SEARs) for the Environmental Impact Statement (EIS), which will guide technical studies and community engagement. The SEARs document and project details are available on the NSW Major Projects Portal [NSW Major Projects Portal](#).



- | | | | |
|---|---|--|---|
|  | Western Extension Project Area |  | Mill Creek Storm Water Channel Proposed Permanent Diversion |
|  | Existing Mill Creek Storm Water Channel Alignment |  | Mill Creek |

Get Involved

We will continue to keep the community informed about the project. Transparent and open communication with the community remains our priority. Your input and involvement are important as we develop a resource recovery solution that benefits both the community and the environment.

Community feedback is important to us; we will host an information sessions and other consultation opportunities during 2025.



1800 213 753



community.NSW@
cleanaway.com.au



PO Box 1002 Menai
Central NSW 2234



cleanaway.com.au