



Bromelton Energy and Resource Centre Stakeholder Reference Group

Meeting #1 | 23 July 2025



Acknowledgement of Country

Cleanaway acknowledges the Traditional Owners of the lands on which we operate and in the communities in which we exist. Today we are discussing land under the custodianship of the Mununjali people.

We celebrate the diversity of Aboriginal peoples and their ongoing cultures and connections to the lands and waters of this country.

We are proud to pay our respects to Elders past, present and future, for they hold the traditions and the cultures, and together we hold the hopes of a truly reconciled Australia.

Agenda

1. Welcome and introductions
2. Role of the Stakeholder Reference Group
3. About Cleanaway
4. About the Bromelton Energy and Resource Centre proposal
5. Process and program
6. Communication and engagement advice
7. Future SRG meeting topics
8. Actions and close

Welcome and introductions

Housekeeping

1 minute intros: name, where you are from, areas of interest about the project

Role of the Stakeholder Reference Group

The SRG is an advisory group - a regular consultative forum where representatives of Cleanaway and the community can discuss varied aspects of the BERC proposal.

The SRG supplements the broader community engagement program – public displays and info sessions in September / October 2025 and in early 2026.

The SRG is guided by the Terms of Reference – all members to agree to participate in the SRG.

Agreed behaviours

Let's respect each other

Listen to understand different points of view

Courtesy and kindness

Keep to time and the agenda

Anything we can't answer or get to today: follow up with information post meetings / next meetings

About Cleanaway



335 active sites



135+ licensed
infrastructure assets



5,900+
vehicles in the fleet



140+
council relationships



132K+
business customers



7,900+
employees



\$3bn
Net Revenue

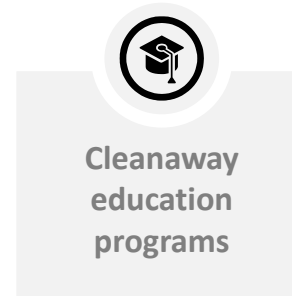
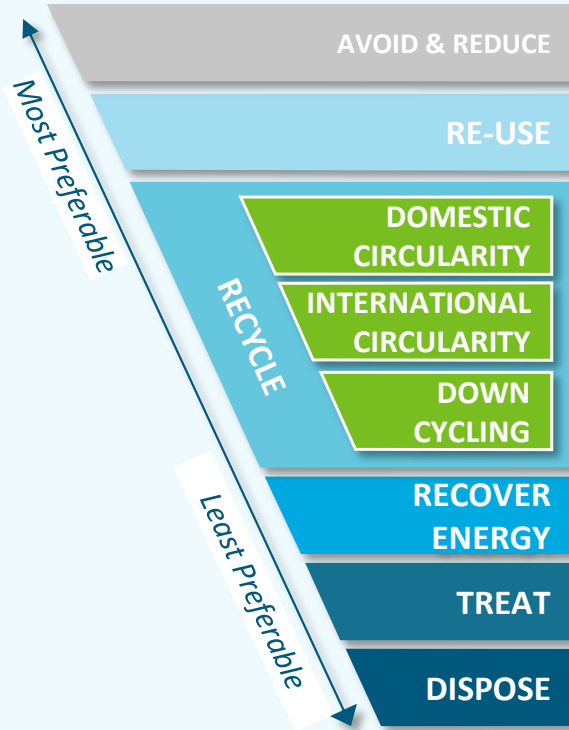


\$ 5bn
market capitalisation

1

Australia's **leading**
waste management
company

Waste hierarchy



Queensland Government Waste Management and Recovery Strategy

Vision

Queensland will become a zero-waste society, where waste is avoided, reused and recycled to the greatest extent possible. Strategic investment in diverse and innovative resource recovery technologies and markets will produce high-value products and generate economic benefits for the state.

- Three core priorities:
 - building economic opportunity
 - reducing the impact of waste on the environment
 - transitioning to the principles of a circular economy to help retain the value of material in the economy for as long as possible
- In 2017–18:
 - Queensland produced nearly 11 million tonnes of waste, with the increase in waste generated over the last decade outstripping population growth by 19 per cent.
 - 4.9 million tonnes of resources recycled or recovered, or around 45 per cent of waste generated. This is below the national average of resource recovery performance across all Australian jurisdictions, and well below those states with the highest recycling rates.

Snapshot of waste in Queensland

In 2017–2018 ...



Targets for 2050

- 25% reduction in household waste
- 90% of waste is recovered and does not go to landfill
- 75% recycling rates across all waste types

Queensland Government Energy from Waste Policy

The BERC proposal is being developed in accordance with Qld Government's Energy from Waste Policy

The policy:

- Supports diverting waste that can't be reused or recycled from landfill
- Supports transition towards circular economy
- Contributes to commitment for renewable energy targets
- Outlines technical, environmental, regulatory, and social or community outcomes for proponents of EfW facilities to achieve
- Advises locating facilities in appropriate locations with other industrial / circular economy opportunities
- Sets environmental protection requirements: Best Available Techniques Reference Documents (BREFs) from European Commission
- Guides assessment of EfW proposals – environmentally relevant activity (ERAs)
- Gives community engagement advice

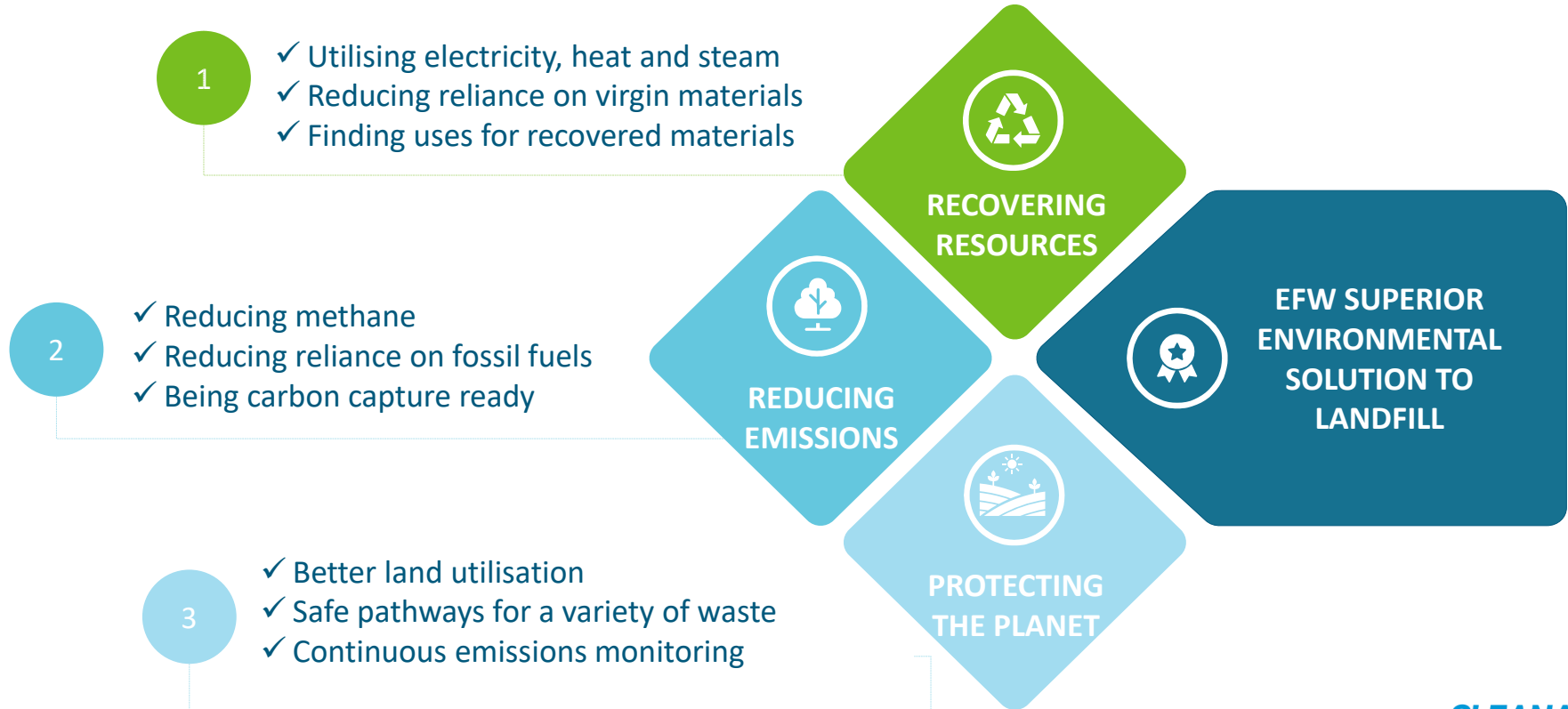


Energy from Waste Policy
Queensland



CLEANAWAY

Energy from Waste



Circular precinct vision

*A connected industrial **ecosystem** that **shares energy and materials**, driving **circularity** and **sustainability** through **industrial symbiosis**.*



Maximise
**resource
recovery**



**Emission
reduction** for
partners



Shared, scalable
infrastructure



Reduce system
wide **energy loss**

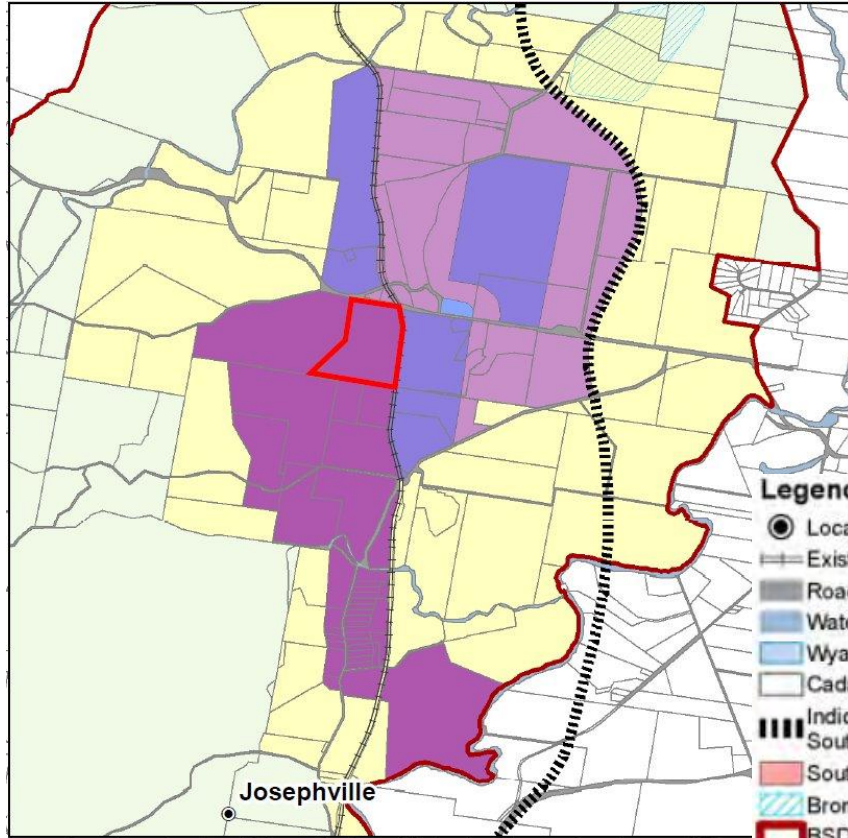


Improve **thermal
efficiency**

About the Bromelton Energy and Resource Centre (BERC)

- The site and the State Development Area
- Queensland Government application process
- Planning assessments
- How the technology works
- BERC site plan
- Jobs and local business suppliers

Bromelton State Development Area (SDA)



- Managed by the Coordinator-General, the Bromelton SDA supports economic development in a way that considers environmental, cultural and social issues as well as existing industry and surrounding infrastructure within the region
- Declared in 2008
- Approximately 15,610 hectares
- Located within Scenic Rim Regional Council area, approximately 6km west of Beaudesert and 75km south of Brisbane

Legend

- Localities
- Existing rail
- Roads
- Waterways
- Wyaralong Dam
- Cadastral boundary
- Indicative Bromelton North South Arterial Road
- Southern Freight Rail Corridor
- Bromelton Offstream storage
- BSDA boundary

Bromelton SDA precincts

- Bromelton Local Service Centre Precinct
- Medium – High Impact Industry Precinct
- Rail Dependant Industry Precinct
- Rural Precinct
- Special Industry Precinct
- Transition Precinct



About the SDA

- Industries already established in the Bromelton SDA:
 - SCT Logistics - intermodal rail freight facility and warehouses
 - GELITA Australia Pty Ltd - manufactures gelatine which is sold as edible gelatine for food industry uses
 - A.J. Bush and Sons Pty Ltd - rendering industry producing protein meal and tallow
 - Beaudesert Central Waste Management Facility - a waste transfer station operated by the Scenic Rim Regional Council
 - Bromelton Quarry - supplies blue rock to the regional area
 - The Neilsen Group quarry - supplying general quarry and gravel products to the regional area
 - Quickcell Technology Products Pty Ltd - manufacturers of prestressed and precast concrete products.



The Coordinator-General assesses and decides all SDA applications as part of the development assessment framework

Specialist consultant team

We've engaged consultants who are leading experts in their fields. These include engineers, environmental scientists, human health scientists, and researchers.



Environmental (Lead) &
non-process engineering



Town planning & approvals



Cultural heritage



Waste-to-energy
technology & engineering



Land & groundwater



Air quality



Human health



Waste flow



Community engagement



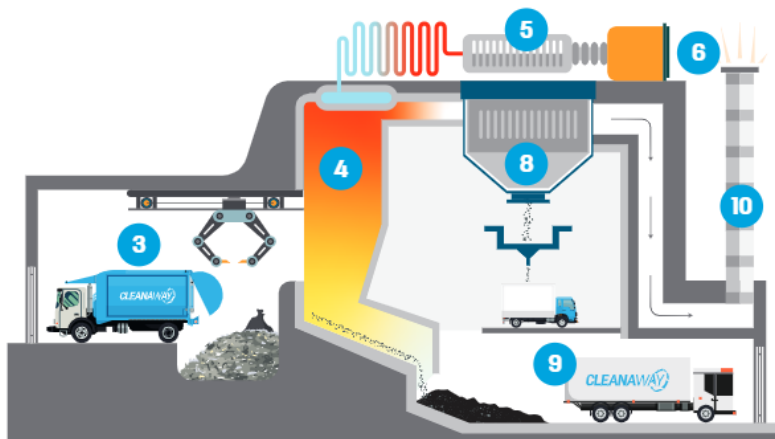
Assessments

Extensive assessments are being conducted as part of the planning proposal:

- Cultural Heritage
- Bushfire Risk
- Ecology
- Groundwater and Hydrogeology
- Policy Overview
- Waste Feedstock
- Waste Management
- Technical Process Description
- Air Quality & Odour
- Noise/Vibration
- Human Health
- Traffic Impact Assessment
- Hydrology, Flood & Surface Water Impact Assessment
- Greenhouse Gas & Climate Change
- Socioeconomic
- Sustainability Management Plan
- Visual Impact

How does it work?

BROMELTON
ENERGY & RESOURCE
CENTRE Powered by CLEANAWAY



- 1 At home and work, we sort our waste into recyclable and non-recyclable items.
- 2 Before arrival at the energy from waste facility, residual waste that has been sorted at home and work is delivered to the facility.
- 3 In the bunker, waste is mixed, ensuring consistency, by large crane claws before placement into the combustion chamber.
- 4 Waste is combusted as it moves along a moving grate. The temperature in the combustion chamber reaches more than 850°C to ensure that waste combusts completely while also destroying organic pollutants and odour.
- 5 Water is heated during combustion creating steam which turns a turbine.
- 6 Baseload electricity is generated.
- 7 Electricity is put back into the grid and used to power homes and businesses.
- 8 Gases created during combustion pass through a multi-step flue gas treatment system, removing pollutants from the gases. Residues from the flue gas treatment are collected in a sealed system for treatment before disposal.
- 9 Bottom ash from the combustion process is collected and stored. Metals are recovered for recycling. It is intended that the remaining bottom ash is sent for reuse in construction.
- 10 Cleaned gases and steam are dispersed high into the atmosphere, mixing well to ensure no impact on surrounding air quality.



HAVE QUESTIONS OR REQUIRE TRANSLATION SUPPORT?

Phone: 0497 058 676

Email: efw.bromelton@cleanaway.com.au

Website: cleanaway.com.au/location/bromelton-energy-and-resource-centre

CLEANAWAY

Energy from Waste technology



Fly through animation

About the BERC facility

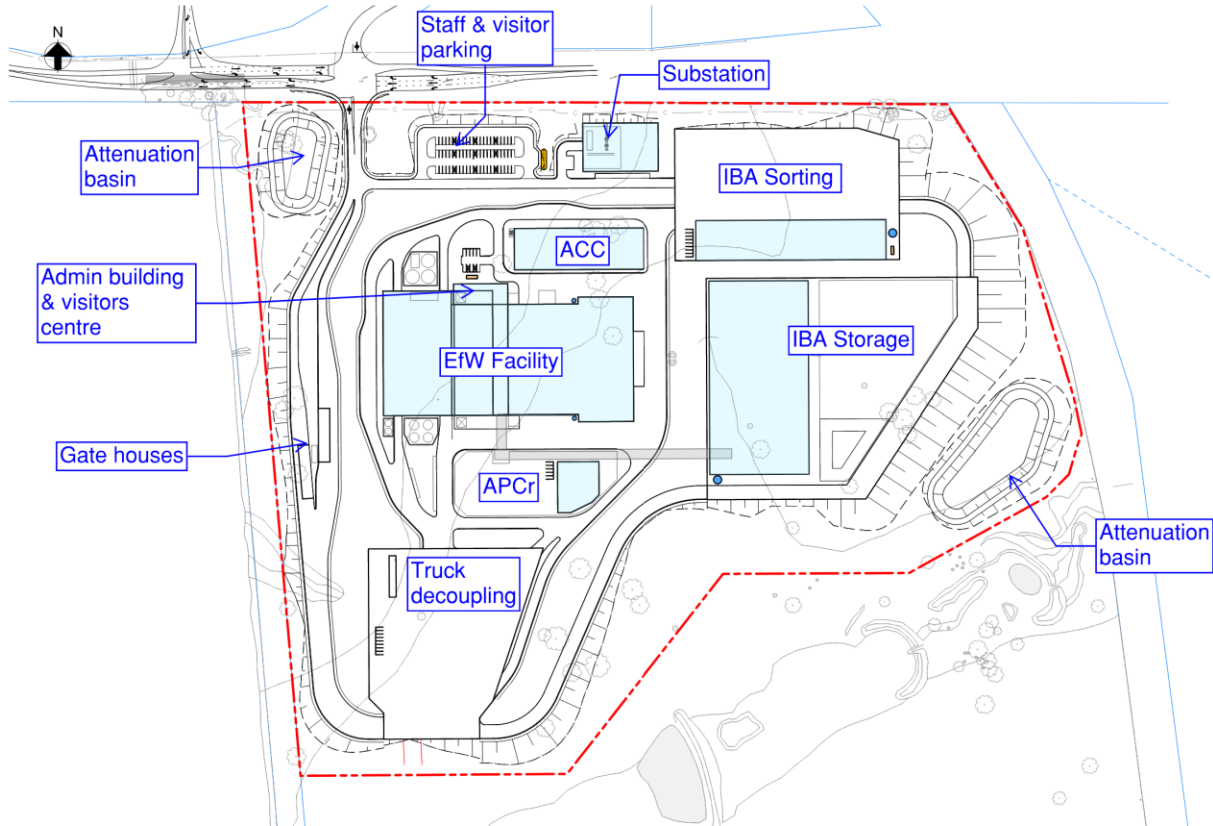


Lot 1 Beaudesert-
Boonah Road,
Bromelton

62 hectares



About the BERC facility



Site plan still under development

Indicative example

Jobs and local business opportunities

Construction workforce

Roles	No.	Description
Skilled trades	600	This will include Riggers, Electricians, Instrument technicians, Scaffolding and Pipe fitters
General workforce	100	Plumbers, Welders, Carpenters
Project Management	20	Project Engineers, Health and Safety, Quality Assurance/Control, Construction and Commissioning
Engineering	25	Discipline engineers and designers to support changes and commissioning at site
Administrative	5	Document Control, Site administration
Temporary	50	Domestic support, fencing contractors, security, supply chain
Total Resources	800	

Jobs and local business opportunities

Operation workforce

Roles	No.	Description
Operations	25	This is for the required operators at site based on a roster system
Maintenance	17	This is required to maintain the plant to ensure safe operations and will be based on a roster system.
Project Management	5	This is the Organisation that will be responsible for the effective running of the facility to meet the various conditions and compliance, Senior Executives, Technical, Operations and Maintenance leadership.
Engineering	2	Discipline engineers to support the operations and maintenance activities
Administrative	1	Document Control, Site administration
Total Roles	50	

Local business suppliers

- Scaffolding
- Spare parts
- Consumables
- Industrial cleaning
- Gardening
- Fabrication

Process and program



What we heard from the community in 2023:

- Traffic and truck movements
- Environmental impacts: air quality & odour
- Sustainable water consumption
- Local employment & training opportunities
- Benefits to local economy
- Other local waste hierarchy initiatives
- Energy production & reduced energy costs

How we engage

Next round of wider community engagement in September / October 2025:

- Newspaper ads
- Social media
- Project website
- Fly-through visualisation
- Danngan Balun applicant consultation
- Newsletter letterbox drop
- Beaudesert Show stand
- Info sessions – The Centre and online
- Fact sheets – summaries of the technical assessments
- Local business event

Other ways to engage?

Future SRG meetings

Next meeting: early September

- Environmental assessment results
- Site plan
- Training and employment opportunities
- Aligning community needs and BERC opportunities

What do you want us to cover in future meetings?

Actions and close

- Summarise actions
- Meeting minutes distributed and on website
- Next meetings: September 2025; November 2025

Website links:

[Bromelton State Development Area | State Development, Infrastructure and Planning](#)

[Current Waste Management and Resource Recovery Strategy | Environment, land and water | Queensland Government](#)

[Energy from Waste Policy | Environment, land and water | Queensland Government](#)

[Bromelton Energy and Resource Centre | Cleanaway](#)