

POLLUTION INCIDENT RESPONSE MANAGEMENT PLAN – (PIRMP)

Cleanaway Industrial Solutions Pty Ltd

Waste Transporter – IWS NSW

EPA LICENCE NO.11215

External Authorities Contacts:

Environment Protection Authority (NSW EPA)	131 555
SafeWork NSW (where applicable)	13 10 50
Comcare	1300 366 979
Local Council	For list of Local Councils see Appendix A
The NSW Ministry of Health	For list of Public Health Units see Appendix B
Fire and Rescue	000
Fire and Rescue without immediate threat	1300 729 579

Revision Status:

Date	Issue	By	Checked	Approved and understood by
08/09/2020	Previous Issue	Previous Template		
14/01/2022	1	HR	BZ / NE / CM	PB / NK / CM / MB / LC
27/01/2023	2	HR	CM / LC / RF	CM
25/01/2024	3	MH	RF / TJ	CM
30/01/2025	4	GC	GC	GC

Figure 1 outlines the Cleanaway protocol for the notification of pollution incidents

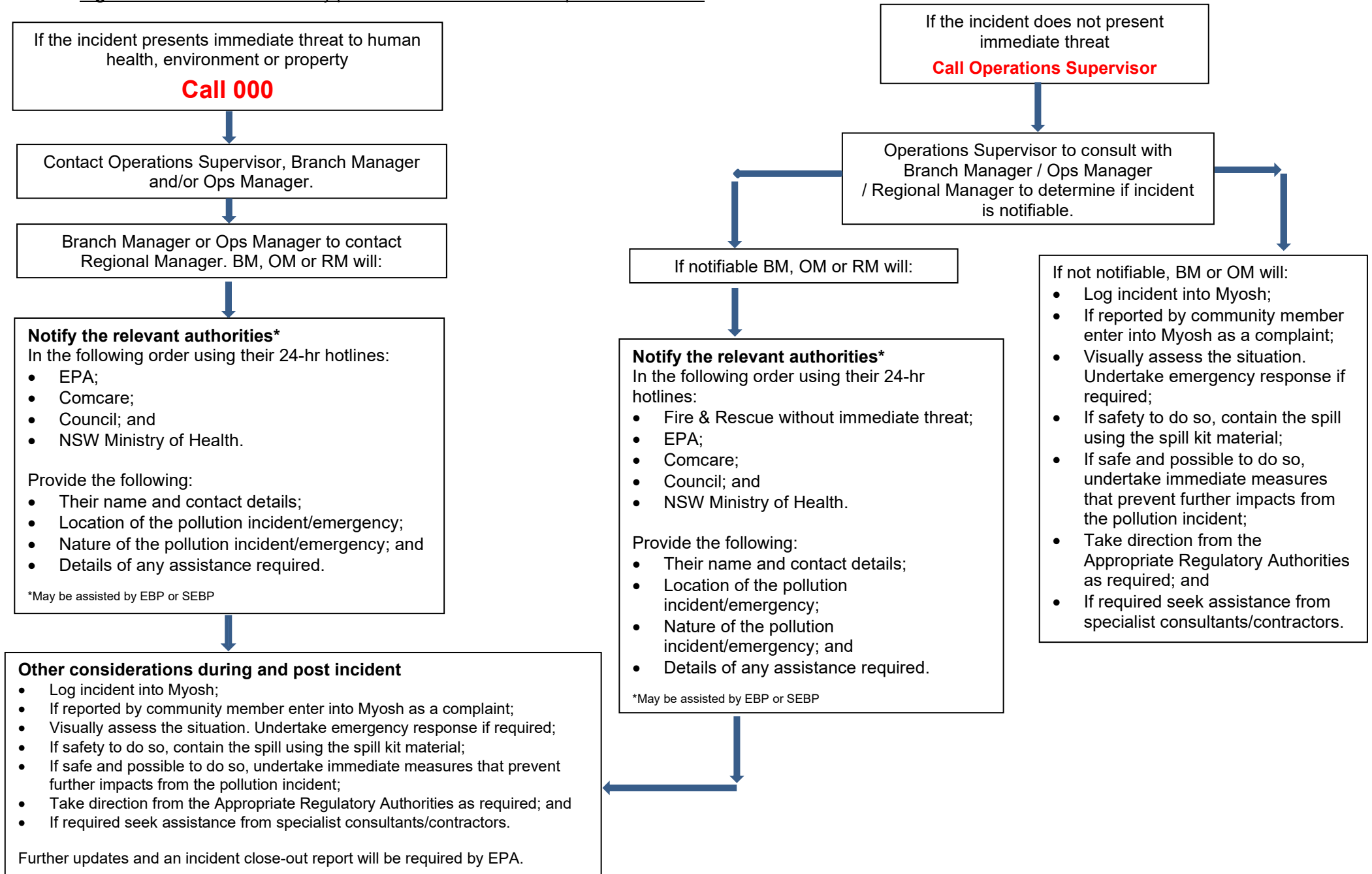
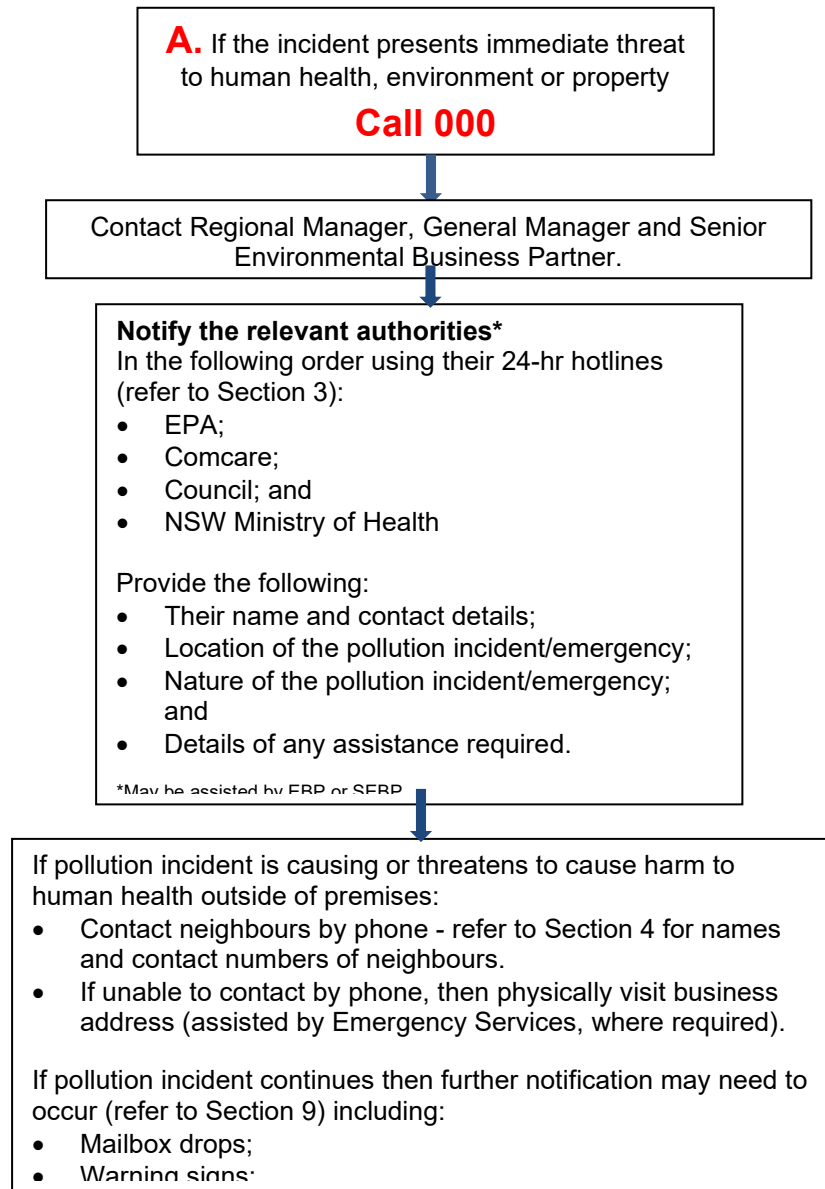
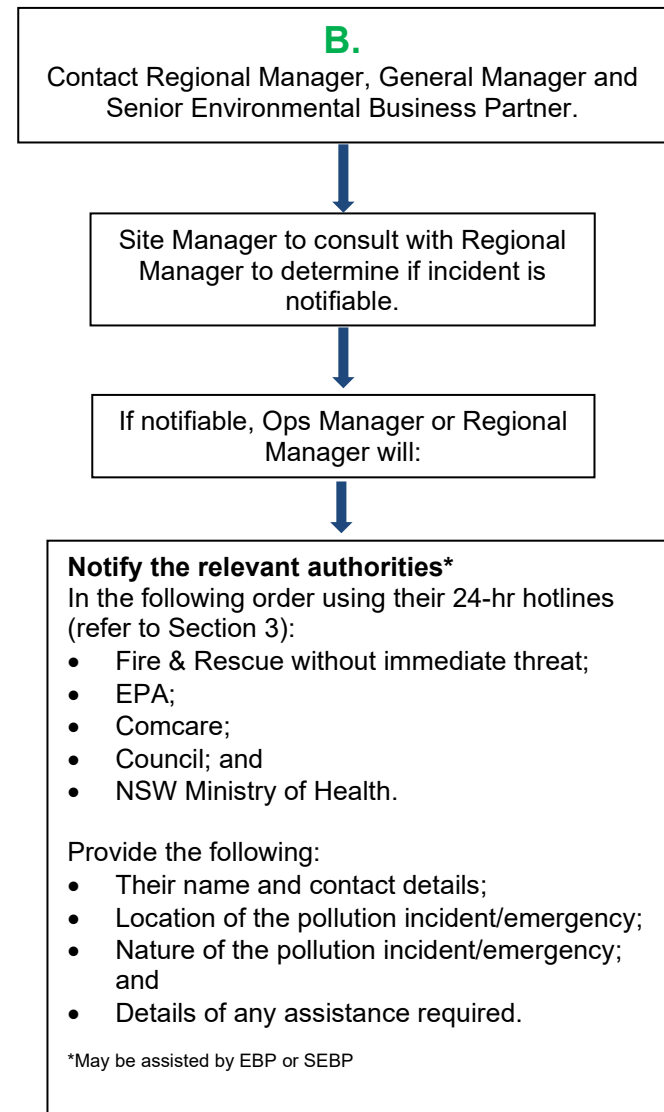


Figure 2 outlines the Cleanaway protocol for the notification of pollution incidents

Line A



Line B



POLLUTION INCIDENT RESPONSE MANAGEMENT PLAN (PIRMP) – Cleanaway Industrial Solutions (IWS)

Approved by: **Greg Culley**

Position/Title: **NSW Branch Manager**

Date: **30/01/2025**

PURPOSE:

Cleanaway Industrial Solutions Pty Ltd (known as Cleanaway IWS) holds an Environment Protection Licence with the NSW Environment Protection Authority (EPA) for the Transportation of Category 1 & Category 2 Trackable Waste. As per the *Protection of the Environment Operations Act 1997* (the POEO Act), the holder of an Environment Protection Licence must prepare, keep, test and implement a pollution incident response management plan (PIRMP) that complies with Part 5.7A of the POEO Act in relation to the activity to which the licence relates.

If a pollution incident occurs in the course of an activity so that material harm to the environment (within the meaning of section 147 of the POEO Act) is caused or threatened, the person carrying on the activity must immediately implement this plan in relation to the activity required by Part 5.7A of the POEO Act.

A written copy of this plan must be kept within the cabin and/or glove box of vehicles transporting Trackable Waste (both within NSW or movements interstate from NSW), and be made available on request by an authorised NSW EPA Officer and to any person who is responsible for implementing this plan.

Parts of the plan must also be available either on a publicly accessible website, or if there is no such website, by providing a copy of the plan to any person who makes a written request. The sections of the plan that are required to be publicly available are set out in clause 98D of the Protection of the Environment Operations (General) Regulation 2022.

NOTE: This plan must be developed in accordance with the *Protection of the Environment Operations Act 1997* and the Protection of the Environment Operations (General) Regulation 2022.

Licensees should also refer to the NSW EPA's *Guideline: Pollution incident response management plans*.

1. Environment Protection Licence (EPL) Details

Name of licensee: Cleanaway Industrial Solutions Pty Limited
(including ABN) 57 099 813 546

EPL number: 11215

Website address: www.cleanaway.com.au

Business Unit Contacts: See Section 2 below.

Community Hotline: 1800 213 753

Emergency Spills Hotline: 1800 SPILLS (1800 774 557)

Scheduled activity on EPL: Transport of trackable waste.

Fee based activity on EPL: Transport of category 1 trackable waste;
Transport of category 2 trackable waste.

2. Pollution incident – Person/s responsible – Business Unit Contact/s

PIRMP activation and management of response to an incident

IWS St Marys Division

Name of person responsible: **Greg Culley**
 Position or title: **Branch Manager**
 Business hours contact number/s: **0498 513 637**
 After hours contact number/s: **0498 513 637**
 Email: Greg.Culley@cleanaway.com.au

Name of person responsible: **Monty Taupau**
 Position or title: **Operations Manager**
 Business hours contact number/s: **0499 308 809**
 After hours contact number/s: **0499 308 809**
 Email: Monty.Taupau@cleanaway.com.au

Other Contacts:

Please contact the St Marys Operations Supervisor and/or Operations Coordinator related to your task / project.

IWS Wollongong Division

Name of person responsible: **Todd Ryan**
 Position of title: **Operations Manager**
 Business hours contact number/s: **0498 377 918**
 After hours contact number/s: **0498 377 918**
 Email: Todd.Ryan@cleanaway.com.au

Other Contacts:

Please contact the Wollongong Operations Supervisor and/or Operations Coordinator related to your task / project.

IWS Newcastle Division

Name of person responsible: **Ryan Kumar**
 Position or title: **Operations Manager**
 Business hours contact number/s: **0438 655 819**
 After hours contact number/s: **0438 655 819**
 Email: Ryan.Kumar@cleanaway.com.au

Other Contacts:

Please contact the Newcastle Operations Supervisor and/or Operations Coordinator related to your task / project.

IWS Management & Support Services

Name of person responsible: **Greg Culley**
 Position or title: **Branch Manager**
 Business hours contact number/s: **0498 513 637**
 After hours contact number/s: **0498 513 637**
 Email: Greg.Culley@cleanaway.com.au

Name of person responsible: **Orhan Cambaz**
 Position or title: **Senior Environmental Business Partner**
 Business hours contact number/s: **0407 923 305**
 After hours contact number/s: **0407 923 305**
 Email: Orhan.Cambaz@cleanaway.com.au

3. Pollution incident – Notification of relevant authorities

Relevant Authority	Contact number
Fire & Rescue NSW / Rural Fire Service	000
Fire & Rescue without immediate threat	1300 729 579
Environment Protection Authority (EPA)	13 15 55
Local Council	See Appendix A
NSW Ministry of Health	See Appendix B

Comcare **1300 366 979**
SafeWork NSW (where applicable) **13 10 50**

4. Actions to be taken during or immediately after a pollution incident

- Actions to Minimise a Pollution Incident:

For each potential pollution risk, there are a number of controls and/or activities that may be relevant. These controls and/or activities ensure (where possible) the chance of an incident occurring are either eliminated, or alternatively controlled so far as reasonably practical. Some general controls which are in place to reduce the likelihood of a pollution incident occurring include:

- Risk Assessments on work tasks;
- SDS Documentation;
- Standard Operating Procedures;
- Incident and Hazard Management;
- Inspections and workplace audits;
- ISO 14001 Environment Management Audits;
- ISO 9001 Quality Management Audits;
- AS/NZS 4801 Safety Management Audits;
- Emergency Management;
- Regular testing and maintenance;
- Vehicle spill kits;
- Vehicle level gauges and overflow protection measures;
- Vehicle safety critical systems;
- Vehicle inspections and checks; and
- Training.

CWY will make all attempts to ensure it prevents pollution events and to ensure environmental incidents do not occur, but in a situation where a pollution incident is imminent and may potentially cause detrimental impacts to human health or the environment, the business shall contact the necessary stakeholders (employees, contractors, neighbours, Regulatory Authorities) to provide as much early warning as possible.

- Actions During a Pollution Incident (see Figure 1 above)

Important - Call 000 immediately if the incident presents an immediate threat to human health, to the environment or to property.

Licensees are required to report pollution incidents **'immediately'** (without delay) to the Relevant Regulatory Authorities. In the event of a pollution incident, the person which has identified the incident should immediately contact their Operations Supervisor / Operations Manager / Branch Manager / Regional Manager to notify them of the incident. The person reporting the pollution incident should provide the following key details:

- Their name and contact details;
- Location of the pollution incident/emergency;
- Nature of the pollution incident/emergency; and
- Details of any assistance required.

Further, during a pollution incident a number of actions may be undertaken to control, contain and/or clean up the incident. Such actions may include:

- Visually assess the situation and undertake emergency response actions (if required);
- If safe to do so, contain the spill using the spill kit material;
- Contact the appropriate regulatory authorities in accordance with this document ;
- If safe and possible to do so, undertake immediate measures that prevent further impacts from the pollution incident including:
 - mobilise vacuum tanker to site,
 - apply spill response material to the incident area, and/or
 - utilise fire extinguishers onsite (if relevant).
- Take direction from the Appropriate Regulatory Authorities as required; and

If required seek assistance from specialist consultants/contractors.

- Actions Post a Pollution Incident

A detailed incident investigation and report will be completed regarding the Pollution Incident to find the root cause of the incident and implement the corrective actions to prevent the incident occurring.

The incident will be reported in the Myosh incident management system. If CWY are notified of the pollution incident by the public, a complaint will also be registered in the Myosh reporting system.

Within a month following the incident, the PIRMP will be reviewed and tested. CWY will continue to liaise with the relevant Regulatory Authorities to reduce the likelihood of the pollution incident occurring.

The Incident will be discussed at the toolbox meeting forum with all relevant staff and contractors regarding the incident investigation, key outcomes and follow up on the completing of the corrective actions.

5. Notification of neighbours and the local community (including communication mechanisms)

Impacts on the broader community are variable and depend on location, or other factors such as wind direction and velocity. In the event of a pollution incident occurring (such as a Fire) which has the potential to impact residential areas, communication methods will be used on a case by case basis and in all situations.

Cleanaway will liaise with Council and NSW Fire & Rescue to provide early warnings to directly affected residents by the mechanisms described below. Early warnings are to include details of what the imminent incident is and how those affected can prepare and respond to the incident. The notification shall provide specific information to the neighbouring properties and local community, so it can minimise the risk of harm.

In the event of a pollution incident Cleanaway (CWY), in consultation with Council, will attempt to provide early warning to directly the community by the following mechanisms as appropriate:

- Telephone calls or door knocking (where appropriate);
- Mailbox drops;
- Warning signs;
- Local media source (radio/newspapers);
- Council webpage updates and media releases; and
- Council website address.

6. Coordinating with Persons & Regulators

Licensees must notify all of the appropriate Regulatory Authorities following a notifiable incident. These include:

- Environment Protection Authority (EPA);
- Ministry of Health;
- Comcare;
- Local Council; and
- Fire and Rescue NSW.

As outlined in Section 3 of the PIRMP 'Pollution incident - Notification of relevant authorities', notification of the incident is to be provided by the Operations Manager, Branch Manager, Regional Manager or other Secondary contact.

All Communications are to be made to:

Branch Manager and/or Operations Manager; and
Regional Manager.

7. Staff Training

Annual PIRMP toolbox meetings will be completed with staff at a site level. This training will be provided to ensure that all staff are aware of the content, processes and requirements of the plan and competently implement if necessary.

This PIRMP Toolbox is in addition to Cleanaway's other training modules and induction processes.

8. Testing & Updating of the PIRMP

Plans must be tested routinely at least once every 12 months and within one month of any pollution incident occurring.

The testing is to be carried out in such a manner as to ensure that the information included in the plan is accurate and up to date, and that each plan is capable of being implemented in a workable and effective manner. Testing may include:

- Desktop scenarios, or
- Physical Scenarios.

Testing records will be maintained electronically on the 'MyOSH' database (entered as Drill & Exercise > PIRMP Test).

Date PIRMP tested	PIRMP tested by	Type of test (drill or desktop)	Learnings	Next scheduled test
-------------------	-----------------	---------------------------------	-----------	---------------------

Refer to the Unanderra - Waynote Place, St Marys - Charles St and Kooragang – Raven St Premise PIRMP for more information regarding the date of the last PIRMP test/s.

Appendix A - NSW Local Council Contact Details

Source - [Local Government Directory - Office of Local Government NSW](#) (Current as of 21 December 2023)

Council Name	PHONE	EMAIL	WEB
Albury City Council	02 6023 8111	info@alburycity.nsw.gov.au	http://www.alburycity.nsw.gov.au
Armidale Regional Council	1300 136 833	council@armidale.nsw.gov.au	http://www.armidaleregional.nsw.gov.au
Ballina Shire Council	1300 864 444	council@ballina.nsw.gov.au	http://www.ballina.nsw.gov.au
Balranald Shire Council	03 5020 1300	council@balranald.nsw.gov.au	http://www.balranald.nsw.gov.au
Bathurst Regional Council	02 6333 6111	council@bathurst.nsw.gov.au	http://www.bathurst.nsw.gov.au
Bayside Council	02 9562 1666	council@bayside.nsw.gov.au	http://www.bayside.nsw.gov.au
Bega Valley Shire Council	02 6499 2222	council@begavalley.nsw.gov.au	http://www.begavalley.nsw.gov.au
Bellingen Shire Council	02 6655 7300	council@bellingen.nsw.gov.au	http://www.bellingen.nsw.gov.au
Berrigan Shire Council	03 5888 5100	mail@berriganshire.nsw.gov.au	http://www.berriganshire.nsw.gov.au
Blacktown City Council	02 9839 6000	council@blacktown.nsw.gov.au	http://www.blacktown.nsw.gov.au
Bland Shire Council	02 6972 2266	council@blandshire.nsw.gov.au	http://www.blandshire.nsw.gov.au
Blayney Shire Council	02 6368 2104	council@blayney.nsw.gov.au	http://www.blayney.nsw.gov.au
Blue Mountains City Council	02 4780 5000	council@bmcc.nsw.gov.au	http://www.bmcc.nsw.gov.au
Bogan Shire Council	02 6835 9000	admin@bogan.nsw.gov.au	http://www.bogan.nsw.gov.au
Bourke Shire Council	02 6830 8000	bourkeshire@bourke.nsw.gov.au	http://www.bourke.nsw.gov.au
Brewarrina Shire Council	02 6830 5100	breshire@brewarrina.nsw.gov.au	https://www.brewarrina.nsw.gov.au/
Broken Hill City Council	08 8080 3300	council@brokenhill.nsw.gov.au	http://www.brokenhill.nsw.gov.au
Burwood Council	02 9911 9911	council@burwood.nsw.gov.au	http://www.burwood.nsw.gov.au
Byron Shire Council	02 6626 7000	council@byron.nsw.gov.au	http://www.byron.nsw.gov.au
Cabonne Council	02 6392 3200	council@cabonne.nsw.gov.au	http://www.cabonne.nsw.gov.au
Camden Council	02 4654 7777	mail@camden.nsw.gov.au	http://www.camden.nsw.gov.au
Campbelltown City Council	02 4645 4000	council@campbelltown.nsw.gov.au	http://www.campbelltown.nsw.gov.au
City of Canada Bay Council	02 9911 6555	council@canadabay.nsw.gov.au	http://www.canadabay.nsw.gov.au
Canterbury Bankstown Council	9707 9000	council@cbccity.nsw.gov.au	http://www.cbcity.nsw.gov.au
Carrathool Shire Council	02 6965 1900	council@carrathool.nsw.gov.au	http://www.carrathool.nsw.gov.au

Central Coast Council	1300 463 954	ask@centralcoast.nsw.gov.au	http://www.centralcoast.nsw.gov.au
Central Darling Shire Council	08 8083 8900	council@centraldarling.nsw.gov.au	http://www.centraldarling.nsw.gov.au
Cessnock City Council	02 4993 4100	council@cessnock.nsw.gov.au	http://www.cessnock.nsw.gov.au
Clarence Valley Council	02 6643 0200	council@clarence.nsw.gov.au	http://www.clarence.nsw.gov.au
Cobar Shire Council	02 6836 5888	mail@cobar.nsw.gov.au	http://www.cobar.nsw.gov.au
Coffs Harbour City Council	02 6648 4000	coffs.council@chcc.nsw.gov.au	http://www.coffsharbour.nsw.gov.au
Coolamon Shire Council	02 6930 1800	council@coolamon.nsw.gov.au	http://www.coolamon.nsw.gov.au
Coonamble Shire Council	02 6827 1900	council@coonambleshire.nsw.gov.au	http://www.coonambleshire.nsw.gov.au
Cootamundra-Gundagai Regional Council	1300 459 689	mail@cgrc.nsw.gov.au	http://www.cgrc.nsw.gov.au/
Cowra Shire Council	02 6340 2000	council@cowra.nsw.gov.au	http://www.cowracouncil.com.au
Cumberland Council	02 8757 9000	council@cumberland.nsw.gov.au	http://www.cumberland.nsw.gov.au
Dubbo Regional Council	02 6801 4000	council@dubbo.nsw.gov.au	http://www.dubbo.nsw.gov.au
Dungog Shire Council	02 4995 7777	shirecouncil@dungog.nsw.gov.au	http://www.dungog.nsw.gov.au
Edward River Council	03 5898 3000	council@edwardriver.nsw.gov.au	http://www.edwardriver.nsw.gov.au
Eurobodalla Shire Council	02 4474 1000	council@esc.nsw.gov.au	http://www.esc.nsw.gov.au
Fairfield City Council	02 9725 0222	mail@fairfieldcity.nsw.gov.au	http://www.fairfieldcity.nsw.gov.au
Federation Council	02 6033 8999	council@federationcouncil.nsw.gov.au	www.federationcouncil.nsw.gov.au
Forbes Shire Council	02 6850 2300	forbes@forbes.nsw.gov.au	http://www.forbes.nsw.gov.au
Georges River Council	02 9330 6400	mail@georgesriver.nsw.gov.au	http://www.georgesriver.nsw.gov.au
Gilgandra Shire Council	02 6817 8800	council@gilgandra.nsw.gov.au	http://www.gilgandra.nsw.gov.au
Glen Innes Severn Council	02 6730 2300	council@gisc.nsw.gov.au	http://www.gisc.nsw.gov.au
Goulburn Mulwaree Council	02 4823 4444	council@goulburn.nsw.gov.au	http://www.goulburn.nsw.gov.au
Greater Hume Shire Council	02 6036 0100	mail@greaterhume.nsw.gov.au	http://www.greaterhume.nsw.gov.au
Griffith City Council	02 6962 8100	admin@griffith.nsw.gov.au	http://www.griffith.nsw.gov.au
Gunnedah Shire Council	02 6740 2100	council@infogunnedah.com.au	http://www.gunnedah.nsw.gov.au
Gwydir Shire Council	02 6724 2000	mail@gwydir.nsw.gov.au	http://www.gwydirshire.com
Hawkesbury City Council	02 4560 4444	council@hawkesbury.nsw.gov.au	http://www.hawkesbury.nsw.gov.au
Hay Shire Council	02 6990 1100	mail@hay.nsw.gov.au	http://www.hay.nsw.gov.au
Hilltops Council	02 6380 1200	mail@hilltops.nsw.gov.au	http://www.hilltops.nsw.gov.au

The Council of the Shire of Hornsby	02 9847 6666	hsc@hornsby.nsw.gov.au	http://www.hornsby.nsw.gov.au
The Council of the Municipality of Hunters Hill	02 9879 9400	customerservice@huntershill.nsw.gov.au	http://www.huntershill.nsw.gov.au
Inner West Council	02 9392 5000	council@innerwest.nsw.gov.au	http://www.innerwest.nsw.gov.au
Inverell Shire Council	02 6728 8288	council@inverell.nsw.gov.au	http://www.inverell.nsw.gov.au
Junee Shire Council	02 6924 8100	customerserviceteam@junee.nsw.gov.au	http://www.junee.nsw.gov.au
Kempsey Shire Council	02 6566 3200	ksc@kempsey.nsw.gov.au	http://www.kempsey.nsw.gov.au
The Council of the Municipality of Kiama	02 4232 0444	council@kiama.nsw.gov.au	http://www.kiama.nsw.gov.au
Ku-ring-gai Council	02 9424 0000	kmc@kmc.nsw.gov.au	http://www.kmc.nsw.gov.au
Kyogle Council	02 6632 1611	council@kyogle.nsw.gov.au	http://www.kyogle.nsw.gov.au
Lachlan Shire Council	02 6895 1900	council@lachlan.nsw.gov.au	http://www.lachlan.nsw.gov.au
Lake Macquarie City Council	02 4921 0333	council@lakemac.nsw.gov.au	http://www.lakemac.com.au
Lane Cove Municipal Council	02 9911 3555	service@lanecove.nsw.gov.au	http://www.lanecove.nsw.gov.au
Leeton Shire Council	02 6953 0911	council@leeton.nsw.gov.au	http://www.leeton.nsw.gov.au
Lismore City Council	02 6625 0500	council@lismore.nsw.gov.au	http://www.lismore.nsw.gov.au
City of Lithgow Council	02 6354 9999	council@lithgow.nsw.gov.au	http://www.council.lithgow.com
Liverpool City Council	1300 362 170	lcc@liverpool.nsw.gov.au	http://www.liverpool.nsw.gov.au
Liverpool Plains Shire Council	02 6746 1755	council@liverpoolplains.nsw.gov.au	http://www.lpsc.nsw.gov.au
Lockhart Shire Council	02 6920 5305	mail@lockhart.nsw.gov.au	http://www.lockhart.nsw.gov.au
Maitland City Council	02 4934 9700	info@maitland.nsw.gov.au	http://www.maitland.nsw.gov.au
Mid-Coast Council	02 6591 7777	council@midcoast.nsw.gov.au	http://www.midcoast.nsw.gov.au
Mid-Western Regional Council	1300 765 002	council@midwestern.nsw.gov.au	http://www.midwestern.nsw.gov.au
Moree Plains Shire Council	02 6757 3222	council@mpsc.nsw.gov.au	http://www.mpsc.nsw.gov.au
Mosman Municipal Council	02 9978 4000	council@mosman.nsw.gov.au	http://www.mosman.nsw.gov.au
Murray River Council	1300 087 004	admin@murrayriver.nsw.gov.au	http://www.murrayriver.nsw.gov.au
Murrumbidgee Council	1300 676 243	mail@murrumbidgee.nsw.gov.au	http://www.murrumbidgee.nsw.gov.au
Muswellbrook Shire Council	02 6549 3700	council@muswellbrook.nsw.gov.au	http://www.muswellbrook.nsw.gov.au
Nambucca Valley Council	02 6568 2555	council@nambucca.nsw.gov.au	http://www.nambucca.nsw.gov.au
Narrabri Shire Council	02 6799 6866	council@narrabri.nsw.gov.au	http://www.narrabri.nsw.gov.au

Narrandera Shire Council	02 6959 5510	council@narrandera.nsw.gov.au	http://www.narrandera.nsw.gov.au
Narromine Shire Council	02 6889 9999	mail@narromine.nsw.gov.au	http://www.narromine.nsw.gov.au
Newcastle City Council	02 4974 2000	mail@ncc.nsw.gov.au	http://www.newcastle.nsw.gov.au
North Sydney Council	02 9936 8100	council@northsydney.nsw.gov.au	http://www.northsydney.nsw.gov.au
Northern Beaches Council	1300 434 434	council@northernbeaches.nsw.gov.au	http://www.northernbeaches.nsw.gov.au
Oberon Council	02 6329 8100	council@oberon.nsw.gov.au	http://www.oberon.nsw.gov.au
Orange City Council	02 6393 8000	council@orange.nsw.gov.au	http://www.orange.nsw.gov.au
Parkes Shire Council	02 6861 2333	council@parkes.nsw.gov.au	http://www.parkes.nsw.gov.au
Council of the City of Parramatta	1300 617 058	council@cityofparramatta.nsw.gov.au	http://www.cityofparramatta.nsw.gov.au
Penrith City Council	02 4732 7777	council@penrith.city	http://www.penrithcity.nsw.gov.au
Port Macquarie-Hastings Council	02 6581 8111	council@pmhc.nsw.gov.au	http://www.pmhc.nsw.gov.au
Port Stephens Council	02 4980 0255	council@portstephens.nsw.gov.au	http://www.portstephens.nsw.gov.au
Queanbeyan-Palerang Regional Council	1300 735 025	council@qprc.nsw.gov.au	http://www.qprc.nsw.gov.au
Randwick City Council	1300 722 542	council@randwick.nsw.gov.au	http://www.randwick.nsw.gov.au
Richmond Valley Council	02 6660 0300	council@richmondvalley.nsw.gov.au	http://www.richmondvalley.nsw.gov.au
Council of the City of Ryde	02 9952 8222	cityofryde@ryde.nsw.gov.au	http://www.ryde.nsw.gov.au
Shellharbour City Council	02 4221 6111	council@shellharbour.nsw.gov.au	http://www.shellharbour.nsw.gov.au
Shoalhaven City Council	02 4429 3111	council@shoalhaven.nsw.gov.au	http://www.shoalhaven.nsw.gov.au
Singleton Council	02 6578 7290	council@singleton.nsw.gov.au	http://www.singleton.nsw.gov.au
Snowy Monaro Regional Council	1300 345 345	council@snowymonaro.nsw.gov.au	http://www.snowymonaro.nsw.gov.au
Snowy Valleys Council	1300 275 782	info@svc.nsw.gov.au	http://www.snowyvalleys.nsw.gov.au
Strathfield Municipal Council	02 9748 9999	council@strathfield.nsw.gov.au	http://www.strathfield.nsw.gov.au
Sutherland Shire Council	02 9710 0333	ssc@ssc.nsw.gov.au	http://www.sutherlandshire.nsw.gov.au
Council of the City of Sydney	02 9265 9333	council@cityofsydney.nsw.gov.au	http://www.cityofsydney.nsw.gov.au
Tamworth Regional Council	02 6767 5555	trc@tamworth.nsw.gov.au	http://www.tamworth.nsw.gov.au
Temora Shire Council	02 6980 1100	temshire@temora.nsw.gov.au	http://www.temora.nsw.gov.au
Tenterfield Shire Council	02 6736 6000	council@tenterfield.nsw.gov.au	http://www.tenterfield.nsw.gov.au
The Hills Shire Council	02 9843 0555	council@thehills.nsw.gov.au	http://www.thehills.nsw.gov.au
Tweed Shire Council	02 6670 2400	tsc@tweed.nsw.gov.au	http://www.tweed.nsw.gov.au

Upper Hunter Shire Council	02 6540 1100	council@upperhunter.nsw.gov.au	http://www.upperhunter.nsw.gov.au
Upper Lachlan Shire Council	02 4830 1000	council@upperlachlan.nsw.gov.au	http://www.upperlachlan.nsw.gov.au
Uralla Shire Council	02 6778 6300	council@uralla.nsw.gov.au	http://www.uralla.nsw.gov.au
Wagga Wagga City Council	1300 292 442	Council@wagga.nsw.gov.au	http://www.wagga.nsw.gov.au
Walcha Council	02 6774 2500	council@walcha.nsw.gov.au	http://www.walcha.nsw.gov.au
Walgett Shire Council	02 6828 1399	admin@walgett.nsw.gov.au	http://www.walgett.nsw.gov.au
Warren Shire Council	02 6847 6600	Council@warren.nsw.gov.au	http://www.warren.nsw.gov.au
Warrumbungle Shire Council	02 6849 2000	info@warrumbungle.nsw.gov.au	http://www.warrumbungle.nsw.gov.au
Waverley Council	02 9083 8000	info@waverley.nsw.gov.au	http://www.waverley.nsw.gov.au
Weddin Shire Council	02 6343 1212	mail@weddin.nsw.gov.au	http://www.weddin.nsw.gov.au
Wentworth Shire Council	03 5027 5027	council@wentworth.nsw.gov.au	http://www.wentworth.nsw.gov.au
Willoughby City Council	02 9777 1000	email@willoughby.nsw.gov.au	http://www.willoughby.nsw.gov.au
Wingecarribee Shire Council	02 4868 0888	mail@wsc.nsw.gov.au	http://www.wsc.nsw.gov.au
Wollondilly Shire Council	02 4677 1100	council@wollondilly.nsw.gov.au	http://www.wollondilly.nsw.gov.au
Wollongong City Council	02 4227 7111	council@wollongong.nsw.gov.au	http://www.wollongong.nsw.gov.au
Woollahra Municipal Council	02 9391 7000	records@woollahra.nsw.gov.au	http://www.woollahra.nsw.gov.au
Yass Valley Council	02 6226 1477	council@yass.nsw.gov.au	http://www.yassvalley.nsw.gov.au

Appendix B - Public Health Unit Contact Numbers

In NSW calling **1300 066 055** will direct you to your local Public Health Unit. Otherwise, please see the below images for specific details for your area (source - <https://www.health.nsw.gov.au/Infectious/Pages/phus.aspx>).

Metropolitan

Camperdown Public Health Unit (Sydney LHD)

PO Box 374, Camperdown 1450
 Phone: (02) 9515 9420
 Fax: (02) 9515 9467 (secure line)
After hours
 Phone: (02) 9515 6111
 (Royal Prince Alfred Hospital)
 -ask for Public Health Officer on call

Gosford Public Health Unit (Central Coast LHD)

PO Box 361, Gosford, 2250
 Phone: (02) 4320 9730
 Fax: (02) 4320 9746 (secure line)
After hours
 Phone: (02) 4320 2111
 (Gosford Hospital)
 -ask for Public Health Nurse on call

Hornsby Public Health Unit (Northern Sydney LHD)

Hornsby Ku-ring-gai Hospital, Hornsby, 2077
 Phone: (02) 9485 6911
 Fax: (02) 9482 1358 (secure line)
After hours
 Phone: (02) 9477 9123
 (Hornsby Hospital)
 -ask for Public Health Officer on call

Justice Health & Forensic Mental Health Network - Population Health

PO Box 150, Matraville, 2036
 Phone: (02) 9700 3744
 Fax: (02) 9700 3747 (secure line)
After hours
 1300 076 267 (option 1)

Liverpool Public Health Unit (South Western Sydney LHD)

P.O. Box 38, Liverpool BC NSW 1871
 Phone: (02) 9794 0855
 Fax: (02) 9794 0838 (secure)
After hours
 Phone: (02) 8738 3000
 (Liverpool Hospital)
 -ask for Public Health Officer on call

Newcastle Public Health Unit (Hunter New England LHD)

Locked Mail Bag 10, Wallsend, 2287
 Phone: 1300 066 055
 Fax: (02) 4924 5704 (secure line)
After hours
 Phone: (02) 4924 6477
 (John Hunter Hospital)
 -ask for Public Health Officer on call

Parramatta Public Health Unit (Western Sydney LHD)

Locked Bag 7118, Parramatta BC 2124
 Phone: (02) 9840 3603
 Fax: (02) 9840 3608 / 9840 3591 (secure line)
After hours
 Phone: (02) 8890 5555
 (Westmead Hospital)
 -ask for Public Health Officer on call

Penrith Public Health Unit (Nepean Blue Mountains LHD)

PO Box 63, Penrith 2751
 Phone: (02) 4734 2022
 Fax: (02) 4734 3300 / 4734 3444 (secure line)
After hours
 Phone: (02) 4734 2000
 (Westmead Hospital)
 -ask for Public Health Officer on call

Randwick Public Health Unit (South Eastern Sydney LHD)

Locked Bag 88, Randwick, 2031
 Phone: (02) 9382 8333
 Fax: (02) 9382 8334 / 9382 8314 (secure line)
After hours
 Phone: (02) 9382 2222
 (Prince of Wales Hospital)
 -ask for Public Health Nurse on call

Wollongong Public Health Unit (Illawarra Shoalhaven LHD)

Locked Bag 9, Wollongong 2500
 Phone: (02) 4221 6700
 Fax: (02) 4221 6759 (secure line)
After hours
 Phone: (02) 4222 5000
 (Wollongong Hospital)
 -ask for Public Health Officer on call

Regional

Albury Public Health Unit (Murrumbidgee and Southern NSW LHD)

PO Box 3095, Albury, 2640
Phone: (02) 6053 4800
Fax: (02) 6933 9220 (secure line)
After hours
Phone: (02) 6053 4800 or 1300 066 055

Bathurst Public Health Unit (Far West and Western NSW LHD)

PO Box 143, Bathurst, 2795
Phone: (02) 6330 5880
Fax: (02) 6332 3137 (secure line)
After hours
Mobile: 0428 400 526

Broken Hill Public Health Unit (Far West and Western NSW LHD)

PO Box 457, Broken Hill, 2880
Phone: (08) 8080 1216
Fax: (08) 8080 1196 (secure line)
After hours
Phone: (08) 8080 1333 (Broken Hill Base Hospital)
-ask for Public Health Officer on call, if no answer:
Mobile: 0419 917 426

Dubbo Public Health Unit (Far West and Western NSW LHD)

PO Box 4061, Dubbo, 2830
Phone: (02) 6809 8979
Fax: (02) 6332 3137 (secure line)
After hours
Phone: (02) 6809 6809 (Dubbo Base Hospital)
-ask for Public Health Officer on call,
if no answer: Mobile: 0418 866 397

Goulburn Public Health Unit (Murrumbidgee and Southern NSW LHD)

PO Box 472, Goulburn, 2580
Phone: (02) 4825 4944
Fax: (02) 4824 1831 / 4825 4942 (secure line)
After hours
Phone: (02) 6053 4800

Lismore Public Health Unit (Mid North Coast and Northern NSW LHD)

PO Box 498, Lismore, 2480
Phone: (02) 6620 7585
Fax: (02) 6622 2151 / 6620 2552 (secure line)
After hours
Phone: 0439 882 752 Infectious Disease or
Phone: 0428 882 805 Environmental Health

Port Macquarie Public Health Unit (Mid North Coast and Northern NSW LHD)

PO Box 126, Port Macquarie, 2444
Phone: (02) 6589 2120
Fax: (02) 6589 2390 (secure line)
After hours
Phone: 0439 882 752 Infectious Disease or
Phone: 0428 882 805 Environmental Health

Tamworth Public Health Unit (Hunter New England LHD)

Locked Mail Bag 10, Wallsend NSW 2287
Phone: (02) 6764 8000
Fax: (02) 4924 5704 (secure line)
After hours
Phone: (02) 4924 6477 (Public Health Officer on call)

Appendix C – EPL No.11215

Section 55 Protection of the Environment Operations Act 1997

Environment Protection Licence



Licence - 11215

<u>Licence Details</u>	
Number:	11215
Anniversary Date:	30-September

<u>Licensee</u>
CLEANAWAY INDUSTRIAL SOLUTIONS PTY LTD
PO BOX 203
PORT KEMBLA NSW 2505

<u>Scheduled Activity</u>
Transport of trackable waste

<u>Fee Based Activity</u>	<u>Scale</u>
Transport of category 1 trackable waste	Any capacity
Transport of category 2 trackable waste	Any capacity

<u>Region</u>
Hazardous Materials, Chemicals & Radiation
59-61 Goulburn Street
SYDNEY NSW 2000
Phone: (02) 9995 5000
Fax: (02) 9995 5999
PO Box A290 SYDNEY SOUTH
NSW 1232