

POLLUTION INCIDENT RESPONSE MANAGEMENT PLAN – (PIRMP)

Cleanaway Industrial Solutions Pty Ltd

Waste Transporter – IWS NSW

EPA LICENCE NO.11215

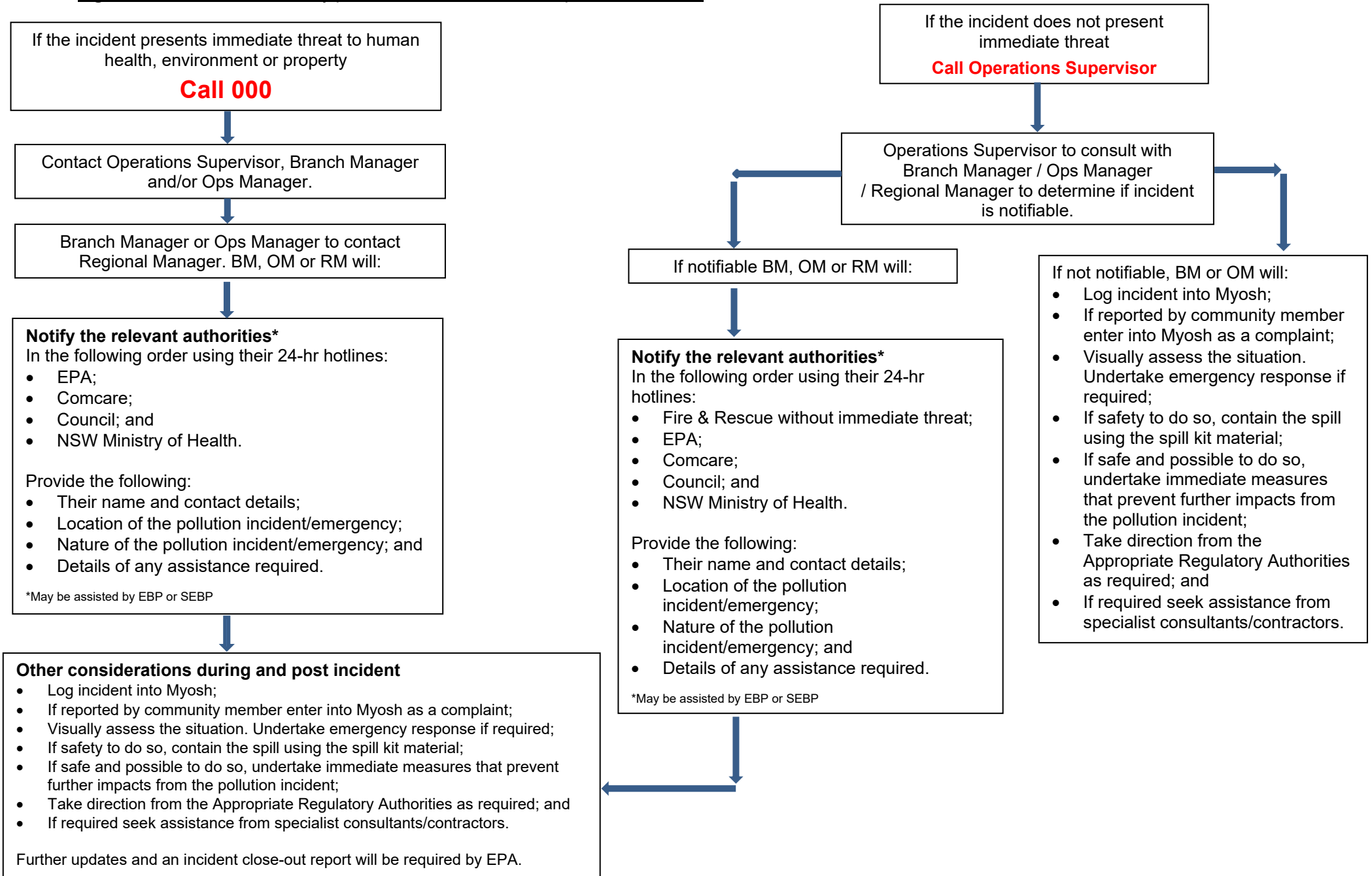
External Authorities Contacts:

| | |
|---|---|
| Environment Protection Authority (NSW EPA) | 131 555 |
| SafeWork NSW (where applicable) | 13 10 50 |
| Comcare | 1300 366 979 |
| Local Council | For list of Local Councils see Appendix A |
| The NSW Ministry of Health | For list of Public Health Units see Appendix B |
| Fire and Rescue | 000 |
| Fire and Rescue without immediate threat | 1300 729 579 |

Revision Status:

| Date | Issue | By | Checked | Approved and understood by |
|-------------|----------------|-------------------|----------------|-----------------------------------|
| 08/09/2020 | Previous Issue | Previous Template | | |
| 14/01/2022 | 1 | HR | BZ / NE / CM | PB / NK / CM / MB / LC |
| 27/01/2023 | 2 | HR | CM / LC / RF | CM |
| 27/01/2024 | 3 | MH | RF / TJ | CM |

Figure 1 outlines the Cleanaway protocol for the notification of pollution incidents



POLLUTION INCIDENT RESPONSE MANAGEMENT PLAN (PIRMP) – Cleanaway Industrial Solutions (IWS)

Approved by: Name: Christopher Malan

Position/Title: Regional Manager

Date: 27/01/2024

PURPOSE:

Cleanaway Industrial Solutions Pty Ltd (known as Cleanaway IWS) holds an Environment Protection Licence with the NSW Environment Protection Authority (EPA) for the Transportation of Category 1 & Category 2 Trackable Waste. As per the *Protection of the Environment Operations Act 1997* (the POEO Act), the holder of an Environment Protection Licence must prepare, keep, test and implement a pollution incident response management plan (PIRMP) that complies with Part 5.7A of the POEO Act in relation to the activity to which the licence relates.

If a pollution incident occurs in the course of an activity so that material harm to the environment (within the meaning of section 147 of the POEO Act) is caused or threatened, the person carrying on the activity must immediately implement this plan in relation to the activity required by Part 5.7A of the POEO Act.

A written copy of this plan must be kept within the cabin and/or glove box of vehicles transporting Trackable Waste (both within NSW or movements interstate from NSW), and be made available on request by an authorised NSW EPA Officer and to any person who is responsible for implementing this plan.

Parts of the plan must also be available either on a publicly accessible website, or if there is no such website, by providing a copy of the plan to any person who makes a written request. The sections of the plan that are required to be publicly available are set out in clause 98D of the Protection of the Environment Operations (General) Regulation 2022.

NOTE: This plan must be developed in accordance with the *Protection of the Environment Operations Act 1997* and the Protection of the Environment Operations (General) Regulation 2022.

Licensees should also refer to the NSW EPA's *Guideline: Pollution incident response management plans*.

1. Environment Protection Licence (EPL) Details

Name of licensee: Cleanaway Industrial Solutions Pty Limited
(including ABN) 57 099 813 546

EPL number: 11215

Website address: www.cleanaway.com.au

Business Unit Contacts: See Section 2 below.

Community Hotline: 1800 213 753

Emergency Spills Hotline: 1800 SPILLS (1800 774 557)

Scheduled activity on EPL: Transport of trackable waste.

Fee based activity on EPL: Transport of category 1 trackable waste;
Transport of category 2 trackable waste.

2. Pollution incident – Person/s responsible – Business Unit Contact/s

PIRMP activation and management of response to an incident

Please note, this section has been removed from the version published on the Cleanaway Website.

Members of the community can contact the Community Hotline on 1800 213 753 to raise any queries, complaints, or concerns with the business.

3. Pollution incident – Notification of relevant authorities

| Relevant Authority | Contact number |
|--|-----------------------|
| Fire & Rescue NSW / Rural Fire Service | 000 |
| Fire & Rescue without immediate threat | 1300 729 579 |
| Environment Protection Authority (EPA) | 13 15 55 |
| Local Council | See Appendix A |
| NSW Ministry of Health | See Appendix B |
| Comcare | 1300 366 979 |
| SafeWork NSW (where applicable) | 13 10 50 |

4. Actions to be taken during or immediately after a pollution incident

- Actions to Minimise a Pollution Incident:

For each potential pollution risk, there are a number of controls and/or activities that may be relevant. These controls and/or activities ensure (where possible) the chance of an incident occurring are either eliminated, or alternatively controlled so far as reasonably practical. Some general controls which are in place to reduce the likelihood of a pollution incident occurring include:

- Risk Assessments on work tasks;
- SDS Documentation;
- Standard Operating Procedures;
- Incident and Hazard Management;
- Inspections and workplace audits;
- ISO 14001 Environment Management Audits;
- ISO 9001 Quality Management Audits;
- AS/NZS 4801 Safety Management Audits;
- Emergency Management;
- Regular testing and maintenance;
- Vehicle spill kits;
- Vehicle level gauges and overflow protection measures;
- Vehicle safety critical systems;
- Vehicle inspections and checks; and
- Training.

CWY will make all attempts to ensure it prevents pollution events and to ensure environmental incidents do not occur, but in a situation where a pollution incident is imminent and may potentially cause detrimental impacts to human health or the environment, the business shall contact the necessary stakeholders (employees, contractors, neighbours, Regulatory Authorities) to provide as much early warning as possible.

- Actions During a Pollution Incident (see Figure 1 above)

Important - Call 000 immediately if the incident presents an immediate threat to human health, to the environment or to property.

Licensees are required to report pollution incidents ‘**immediately**’ (without delay) to the Relevant Regulatory Authorities. In the event of a pollution incident, the person which has identified the incident should immediately contact their Operations Supervisor / Operations Manager / Branch Manager /

Regional Manager to notify them of the incident. The person reporting the pollution incident should provide the following key details:

- Their name and contact details;
- Location of the pollution incident/emergency;
- Nature of the pollution incident/emergency; and
- Details of any assistance required.

Further, during a pollution incident a number of actions may be undertaken to control, contain and/or clean up the incident. Such actions may include:

- Visually assess the situation and undertake emergency response actions (if required);
- If safe to do so, contain the spill using the spill kit material;
- Contact the appropriate regulatory authorities in accordance with this document ;
- If safe and possible to do so, undertake immediate measures that prevent further impacts from the pollution incident including:
 - mobilise vacuum tanker to site,
 - apply spill response material to the incident area, and/or
 - utilise fire extinguishers onsite (if relevant).
- Take direction from the Appropriate Regulatory Authorities as required; and

If required seek assistance from specialist consultants/contractors.

- Actions Post a Pollution Incident

A detailed incident investigation and report will be completed regarding the Pollution Incident to find the root cause of the incident and implement the corrective actions to prevent the incident occurring.

The incident will be reported in the Myosh incident management system. If CWY are notified of the pollution incident by the public, a complaint will also be registered in the Myosh reporting system.

Within a month following the incident, the PIRMP will be reviewed and tested. CWY will continue to liaise with the relevant Regulatory Authorities to reduce the likelihood of the pollution incident occurring.

The Incident will be discussed at the toolbox meeting forum with all relevant staff and contractors regarding the incident investigation, key outcomes and follow up on the completing of the corrective actions.

5. Notification of neighbours and the local community (including communication mechanisms)

Impacts on the broader community are variable and depend on location, or other factors such as wind direction and velocity. In the event of a pollution incident occurring (such as a Fire) which has the potential to impact residential areas, communication methods will be used on a case by case basis and in all situations.

Cleanaway will liaise with Council and NSW Fire & Rescue to provide early warnings to directly affected residents by the mechanisms described below. Early warnings are to include details of what the imminent incident is and how those affected can prepare and respond to the incident. The notification shall provide specific information to the neighbouring properties and local community, so it can minimise the risk of harm.

In the event of a pollution incident Cleanaway (CWY), in consultation with Council, will attempt to provide early warning to directly the community by the following mechanisms as appropriate:

- Telephone calls or door knocking (where appropriate);
- Mailbox drops;
- Warning signs;
- Local media source (radio/newspapers);
- Council webpage updates and media releases; and
- Council website address.

6. Coordinating with Persons & Regulators

Licensees must notify all of the appropriate Regulatory Authorities following a notifiable incident. These include:

- Environment Protection Authority (EPA);
- Ministry of Health;
- Comcare;
- Local Council; and
- Fire and Rescue NSW.

As outlined in Section 3 of the PIRMP 'Pollution incident - Notification of relevant authorities', notification of the incident is to be provided by the Operations Manager, Branch Manager, Regional Manager or other Secondary contact.

All Communications are to be made to:

Branch Manager and/or Operations Manager; and

Regional Manager.

7. Staff Training

Annual PIRMP toolbox meetings will be completed with staff at a site level. This training will be provided to ensure that all staff are aware of the content, processes and requirements of the plan and competently implement if necessary.

This PIRMP Toolbox is in addition to Cleanaway's other training modules and induction processes.

8. Testing & Updating of the PIRMP

Plans must be tested routinely at least once every 12 months and within one month of any pollution incident occurring.

The testing is to be carried out in such a manner as to ensure that the information included in the plan is accurate and up to date, and that each plan is capable of being implemented in a workable and effective manner. Testing may include:

- Desktop scenarios, or
- Physical Scenarios.

Testing records will be maintained electronically on the 'MyOSH' database (entered as Drill & Exercise > PIRMP Test).

| Date PIRMP tested | PIRMP tested by | Type of test (drill or desktop) | Learnings | Next scheduled test |
|-------------------|-----------------|---------------------------------|-----------|---------------------|
|-------------------|-----------------|---------------------------------|-----------|---------------------|

Refer to the Unanderra - Waynote Place, St Marys - Charles St and Kooragang – Raven St Premise PIRMP for more information regarding the date of the last PIRMP test/s.

Appendix A - NSW Local Council Contact Details

Source - [Local Government Directory - Office of Local Government NSW](#) (Current as of 21 December 2023)

| Council Name | PHONE | EMAIL | WEB |
|------------------------------|--------------|---------------------------------|---|
| Albury City Council | 02 6023 8111 | info@alburycity.nsw.gov.au | http://www.alburycity.nsw.gov.au |
| Armidale Regional Council | 1300 136 833 | council@armidale.nsw.gov.au | http://www.armidaleregional.nsw.gov.au |
| Ballina Shire Council | 1300 864 444 | council@ballina.nsw.gov.au | http://www.ballina.nsw.gov.au |
| Balranald Shire Council | 03 5020 1300 | council@balranald.nsw.gov.au | http://www.balranald.nsw.gov.au |
| Bathurst Regional Council | 02 6333 6111 | council@bathurst.nsw.gov.au | http://www.bathurst.nsw.gov.au |
| Bayside Council | 02 9562 1666 | council@bayside.nsw.gov.au | http://www.bayside.nsw.gov.au |
| Bega Valley Shire Council | 02 6499 2222 | council@begavalley.nsw.gov.au | http://www.begavalley.nsw.gov.au |
| Bellingen Shire Council | 02 6655 7300 | council@bellingen.nsw.gov.au | http://www.bellingen.nsw.gov.au |
| Berrigan Shire Council | 03 5888 5100 | mail@berriganshire.nsw.gov.au | http://www.berriganshire.nsw.gov.au |
| Blacktown City Council | 02 9839 6000 | council@blacktown.nsw.gov.au | http://www.blacktown.nsw.gov.au |
| Bland Shire Council | 02 6972 2266 | council@blandshire.nsw.gov.au | http://www.blandshire.nsw.gov.au |
| Blayney Shire Council | 02 6368 2104 | council@blayney.nsw.gov.au | http://www.blayney.nsw.gov.au |
| Blue Mountains City Council | 02 4780 5000 | council@bmcc.nsw.gov.au | http://www.bmcc.nsw.gov.au |
| Bogan Shire Council | 02 6835 9000 | admin@bogan.nsw.gov.au | http://www.bogan.nsw.gov.au |
| Bourke Shire Council | 02 6830 8000 | bourkeshire@bourke.nsw.gov.au | http://www.bourke.nsw.gov.au |
| Brewarrina Shire Council | 02 6830 5100 | breshire@brewarrina.nsw.gov.au | https://www.brewarrina.nsw.gov.au/ |
| Broken Hill City Council | 08 8080 3300 | council@brokenhill.nsw.gov.au | http://www.brokenhill.nsw.gov.au |
| Burwood Council | 02 9911 9911 | council@burwood.nsw.gov.au | http://www.burwood.nsw.gov.au |
| Byron Shire Council | 02 6626 7000 | council@byron.nsw.gov.au | http://www.byron.nsw.gov.au |
| Cabonne Council | 02 6392 3200 | council@cabonne.nsw.gov.au | http://www.cabonne.nsw.gov.au |
| Camden Council | 02 4654 7777 | mail@camden.nsw.gov.au | http://www.camden.nsw.gov.au |
| Campbelltown City Council | 02 4645 4000 | council@campbelltown.nsw.gov.au | http://www.campbelltown.nsw.gov.au |
| City of Canada Bay Council | 02 9911 6555 | council@canadabay.nsw.gov.au | http://www.canadabay.nsw.gov.au |
| Canterbury Bankstown Council | 9707 9000 | council@cbc-city.nsw.gov.au | http://www.cbc-city.nsw.gov.au |
| Carrathool Shire Council | 02 6965 1900 | council@carrathool.nsw.gov.au | http://www.carrathool.nsw.gov.au |

| | | | |
|---------------------------------------|--------------|--------------------------------------|---|
| Central Coast Council | 1300 463 954 | ask@centralcoast.nsw.gov.au | http://www.centralcoast.nsw.gov.au |
| Central Darling Shire Council | 08 8083 8900 | council@centraldarling.nsw.gov.au | http://www.centraldarling.nsw.gov.au |
| Cessnock City Council | 02 4993 4100 | council@cessnock.nsw.gov.au | http://www.cessnock.nsw.gov.au |
| Clarence Valley Council | 02 6643 0200 | council@clarence.nsw.gov.au | http://www.clarence.nsw.gov.au |
| Cobar Shire Council | 02 6836 5888 | mail@cobar.nsw.gov.au | http://www.cobar.nsw.gov.au |
| Coffs Harbour City Council | 02 6648 4000 | coffs.council@chcc.nsw.gov.au | http://www.coffsharbour.nsw.gov.au |
| Coolamon Shire Council | 02 6930 1800 | council@coolamon.nsw.gov.au | http://www.coolamon.nsw.gov.au |
| Coonamble Shire Council | 02 6827 1900 | council@coonambleshire.nsw.gov.au | http://www.coonambleshire.nsw.gov.au |
| Cootamundra-Gundagai Regional Council | 1300 459 689 | mail@cgrc.nsw.gov.au | http://www.cgrc.nsw.gov.au/ |
| Cowra Shire Council | 02 6340 2000 | council@cowra.nsw.gov.au | http://www.cowracouncil.com.au |
| Cumberland Council | 02 8757 9000 | council@cumberland.nsw.gov.au | http://www.cumberland.nsw.gov.au |
| Dubbo Regional Council | 02 6801 4000 | council@dubbo.nsw.gov.au | http://www.dubbo.nsw.gov.au |
| Dungog Shire Council | 02 4995 7777 | shirecouncil@dungog.nsw.gov.au | http://www.dungog.nsw.gov.au |
| Edward River Council | 03 5898 3000 | council@edwardriver.nsw.gov.au | http://www.edwardriver.nsw.gov.au |
| Eurobodalla Shire Council | 02 4474 1000 | council@esc.nsw.gov.au | http://www.esc.nsw.gov.au |
| Fairfield City Council | 02 9725 0222 | mail@fairfieldcity.nsw.gov.au | http://www.fairfieldcity.nsw.gov.au |
| Federation Council | 02 6033 8999 | council@federationcouncil.nsw.gov.au | www.federationcouncil.nsw.gov.au |
| Forbes Shire Council | 02 6850 2300 | forbes@forbes.nsw.gov.au | http://www.forbes.nsw.gov.au |
| Georges River Council | 02 9330 6400 | mail@georgesriver.nsw.gov.au | http://www.georgesriver.nsw.gov.au |
| Gilgandra Shire Council | 02 6817 8800 | council@gilgandra.nsw.gov.au | http://www.gilgandra.nsw.gov.au |
| Glen Innes Severn Council | 02 6730 2300 | council@gisc.nsw.gov.au | http://www.gisc.nsw.gov.au |
| Goulburn Mulwaree Council | 02 4823 4444 | council@goulburn.nsw.gov.au | http://www.goulburn.nsw.gov.au |
| Greater Hume Shire Council | 02 6036 0100 | mail@greaterhume.nsw.gov.au | http://www.greaterhume.nsw.gov.au |
| Griffith City Council | 02 6962 8100 | admin@griffith.nsw.gov.au | http://www.griffith.nsw.gov.au |
| Gunnedah Shire Council | 02 6740 2100 | council@infogunnedah.com.au | http://www.gunnedah.nsw.gov.au |
| Gwydir Shire Council | 02 6724 2000 | mail@gwydir.nsw.gov.au | http://www.gwydirshire.com |
| Hawkesbury City Council | 02 4560 4444 | council@hawkesbury.nsw.gov.au | http://www.hawkesbury.nsw.gov.au |
| Hay Shire Council | 02 6990 1100 | mail@hay.nsw.gov.au | http://www.hay.nsw.gov.au |
| Hilltops Council | 02 6380 1200 | mail@hilltops.nsw.gov.au | http://www.hilltops.nsw.gov.au |

| | | | |
|---|--------------|--|---|
| The Council of the Shire of Hornsby | 02 9847 6666 | hsc@hornsby.nsw.gov.au | http://www.hornsby.nsw.gov.au |
| The Council of the Municipality of Hunters Hill | 02 9879 9400 | customerservice@huntershill.nsw.gov.au | http://www.huntershill.nsw.gov.au |
| Inner West Council | 02 9392 5000 | council@innerwest.nsw.gov.au | http://www.innerwest.nsw.gov.au |
| Inverell Shire Council | 02 6728 8288 | council@inverell.nsw.gov.au | http://www.inverell.nsw.gov.au |
| Junee Shire Council | 02 6924 8100 | customerserviceteam@junee.nsw.gov.au | http://www.junee.nsw.gov.au |
| Kempsey Shire Council | 02 6566 3200 | ksc@kempsey.nsw.gov.au | http://www.kempsey.nsw.gov.au |
| The Council of the Municipality of Kiama | 02 4232 0444 | council@kiama.nsw.gov.au | http://www.kiama.nsw.gov.au |
| Ku-ring-gai Council | 02 9424 0000 | kmc@kmc.nsw.gov.au | http://www.kmc.nsw.gov.au |
| Kyogle Council | 02 6632 1611 | council@kyogle.nsw.gov.au | http://www.kyogle.nsw.gov.au |
| Lachlan Shire Council | 02 6895 1900 | council@lachlan.nsw.gov.au | http://www.lachlan.nsw.gov.au |
| Lake Macquarie City Council | 02 4921 0333 | council@lakemac.nsw.gov.au | http://www.lakemac.com.au |
| Lane Cove Municipal Council | 02 9911 3555 | service@lanecove.nsw.gov.au | http://www.lanecove.nsw.gov.au |
| Leeton Shire Council | 02 6953 0911 | council@leeton.nsw.gov.au | http://www.leeton.nsw.gov.au |
| Lismore City Council | 02 6625 0500 | council@lismore.nsw.gov.au | http://www.lismore.nsw.gov.au |
| City of Lithgow Council | 02 6354 9999 | council@lithgow.nsw.gov.au | http://www.council.lithgow.com |
| Liverpool City Council | 1300 362 170 | lcc@liverpool.nsw.gov.au | http://www.liverpool.nsw.gov.au |
| Liverpool Plains Shire Council | 02 6746 1755 | council@liverpoolplains.nsw.gov.au | http://www.lpsc.nsw.gov.au |
| Lockhart Shire Council | 02 6920 5305 | mail@lockhart.nsw.gov.au | http://www.lockhart.nsw.gov.au |
| Maitland City Council | 02 4934 9700 | info@maitland.nsw.gov.au | http://www.maitland.nsw.gov.au |
| Mid-Coast Council | 02 6591 7777 | council@midcoast.nsw.gov.au | http://www.midcoast.nsw.gov.au |
| Mid-Western Regional Council | 1300 765 002 | council@midwestern.nsw.gov.au | http://www.midwestern.nsw.gov.au |
| Moree Plains Shire Council | 02 6757 3222 | council@mpsc.nsw.gov.au | http://www.mpsc.nsw.gov.au |
| Mosman Municipal Council | 02 9978 4000 | council@mosman.nsw.gov.au | http://www.mosman.nsw.gov.au |
| Murray River Council | 1300 087 004 | admin@murrayriver.nsw.gov.au | http://www.murrayriver.nsw.gov.au |
| Murrumbidgee Council | 1300 676 243 | mail@murrumbidgee.nsw.gov.au | http://www.murrumbidgee.nsw.gov.au |
| Muswellbrook Shire Council | 02 6549 3700 | council@muswellbrook.nsw.gov.au | http://www.muswellbrook.nsw.gov.au |
| Nambucca Valley Council | 02 6568 2555 | council@nambucca.nsw.gov.au | http://www.nambucca.nsw.gov.au |
| Narrabri Shire Council | 02 6799 6866 | council@narrabri.nsw.gov.au | http://www.narrabri.nsw.gov.au |

| | | | |
|--------------------------------------|--------------|-------------------------------------|---|
| Narrandera Shire Council | 02 6959 5510 | council@narrandera.nsw.gov.au | http://www.narrandera.nsw.gov.au |
| Narromine Shire Council | 02 6889 9999 | mail@narromine.nsw.gov.au | http://www.narromine.nsw.gov.au |
| Newcastle City Council | 02 4974 2000 | mail@ncc.nsw.gov.au | http://www.newcastle.nsw.gov.au |
| North Sydney Council | 02 9936 8100 | council@northsydney.nsw.gov.au | http://www.northsydney.nsw.gov.au |
| Northern Beaches Council | 1300 434 434 | council@northernbeaches.nsw.gov.au | http://www.northernbeaches.nsw.gov.au |
| Oberon Council | 02 6329 8100 | council@oberon.nsw.gov.au | http://www.oberon.nsw.gov.au |
| Orange City Council | 02 6393 8000 | council@orange.nsw.gov.au | http://www.orange.nsw.gov.au |
| Parkes Shire Council | 02 6861 2333 | council@parkes.nsw.gov.au | http://www.parkes.nsw.gov.au |
| Council of the City of Parramatta | 1300 617 058 | council@cityofparramatta.nsw.gov.au | http://www.cityofparramatta.nsw.gov.au |
| Penrith City Council | 02 4732 7777 | council@penrith.city | http://www.penrithcity.nsw.gov.au |
| Port Macquarie-Hastings Council | 02 6581 8111 | council@pmhc.nsw.gov.au | http://www.pmhc.nsw.gov.au |
| Port Stephens Council | 02 4980 0255 | council@portstephens.nsw.gov.au | http://www.portstephens.nsw.gov.au |
| Queanbeyan-Palerang Regional Council | 1300 735 025 | council@qprc.nsw.gov.au | http://www.qprc.nsw.gov.au |
| Randwick City Council | 1300 722 542 | council@randwick.nsw.gov.au | http://www.randwick.nsw.gov.au |
| Richmond Valley Council | 02 6660 0300 | council@richmondvalley.nsw.gov.au | http://www.richmondvalley.nsw.gov.au |
| Council of the City of Ryde | 02 9952 8222 | cityofryde@ryde.nsw.gov.au | http://www.ryde.nsw.gov.au |
| Shellharbour City Council | 02 4221 6111 | council@shellharbour.nsw.gov.au | http://www.shellharbour.nsw.gov.au |
| Shoalhaven City Council | 02 4429 3111 | council@shoalhaven.nsw.gov.au | http://www.shoalhaven.nsw.gov.au |
| Singleton Council | 02 6578 7290 | council@singleton.nsw.gov.au | http://www.singleton.nsw.gov.au |
| Snowy Monaro Regional Council | 1300 345 345 | council@snowymonaro.nsw.gov.au | http://www.snowymonaro.nsw.gov.au |
| Snowy Valleys Council | 1300 275 782 | info@svc.nsw.gov.au | http://www.snowyvalleys.nsw.gov.au |
| Strathfield Municipal Council | 02 9748 9999 | council@strathfield.nsw.gov.au | http://www.strathfield.nsw.gov.au |
| Sutherland Shire Council | 02 9710 0333 | ssc@ssc.nsw.gov.au | http://www.sutherlandshire.nsw.gov.au |
| Council of the City of Sydney | 02 9265 9333 | council@cityofsydney.nsw.gov.au | http://www.cityofsydney.nsw.gov.au |
| Tamworth Regional Council | 02 6767 5555 | trc@tamworth.nsw.gov.au | http://www.tamworth.nsw.gov.au |
| Temora Shire Council | 02 6980 1100 | temshire@temora.nsw.gov.au | http://www.temora.nsw.gov.au |
| Tenterfield Shire Council | 02 6736 6000 | council@tenterfield.nsw.gov.au | http://www.tenterfield.nsw.gov.au |
| The Hills Shire Council | 02 9843 0555 | council@thehills.nsw.gov.au | http://www.thehills.nsw.gov.au |
| Tweed Shire Council | 02 6670 2400 | tsc@tweed.nsw.gov.au | http://www.tweed.nsw.gov.au |

| | | | |
|-----------------------------|--------------|---------------------------------|---|
| Upper Hunter Shire Council | 02 6540 1100 | council@upperhunter.nsw.gov.au | http://www.upperhunter.nsw.gov.au |
| Upper Lachlan Shire Council | 02 4830 1000 | council@upperlachlan.nsw.gov.au | http://www.upperlachlan.nsw.gov.au |
| Uralla Shire Council | 02 6778 6300 | council@uralla.nsw.gov.au | http://www.uralla.nsw.gov.au |
| Wagga Wagga City Council | 1300 292 442 | Council@wagga.nsw.gov.au | http://www.wagga.nsw.gov.au |
| Walcha Council | 02 6774 2500 | council@walcha.nsw.gov.au | http://www.walcha.nsw.gov.au |
| Walgett Shire Council | 02 6828 1399 | admin@walgett.nsw.gov.au | http://www.walgett.nsw.gov.au |
| Warren Shire Council | 02 6847 6600 | Council@warren.nsw.gov.au | http://www.warren.nsw.gov.au |
| Warrumbungle Shire Council | 02 6849 2000 | info@warrumbungle.nsw.gov.au | http://www.warrumbungle.nsw.gov.au |
| Waverley Council | 02 9083 8000 | info@waverley.nsw.gov.au | http://www.waverley.nsw.gov.au |
| Weddin Shire Council | 02 6343 1212 | mail@weddin.nsw.gov.au | http://www.weddin.nsw.gov.au |
| Wentworth Shire Council | 03 5027 5027 | council@wentworth.nsw.gov.au | http://www.wentworth.nsw.gov.au |
| Willoughby City Council | 02 9777 1000 | email@willoughby.nsw.gov.au | http://www.willoughby.nsw.gov.au |
| Wingecarribee Shire Council | 02 4868 0888 | mail@wsc.nsw.gov.au | http://www.wsc.nsw.gov.au |
| Wollondilly Shire Council | 02 4677 1100 | council@wollondilly.nsw.gov.au | http://www.wollondilly.nsw.gov.au |
| Wollongong City Council | 02 4227 7111 | council@wollongong.nsw.gov.au | http://www.wollongong.nsw.gov.au |
| Woollahra Municipal Council | 02 9391 7000 | records@woollahra.nsw.gov.au | http://www.woollahra.nsw.gov.au |
| Yass Valley Council | 02 6226 1477 | council@yass.nsw.gov.au | http://www.yassvalley.nsw.gov.au |

Appendix B - Public Health Unit Contact Numbers

In NSW calling **1300 066 055** will direct you to your local Public Health Unit. Otherwise, please see the below images for specific details for your area (source - <https://www.health.nsw.gov.au/Infectious/Pages/phus.aspx>).

Metropolitan

Camperdown Public Health Unit (Sydney LHD)

PO Box 374, Camperdown 1450
 Phone: (02) 9515 9420
 Fax: (02) 9515 9467 (secure line)
After hours
 Phone: (02) 9515 6111
 (Royal Prince Alfred Hospital)
 -ask for Public Health Officer on call

Gosford Public Health Unit (Central Coast LHD)

PO Box 361, Gosford, 2250
 Phone: (02) 4320 9730
 Fax: (02) 4320 9746 (secure line)
After hours
 Phone: (02) 4320 2111
 (Gosford Hospital)
 -ask for Public Health Nurse on call

Hornsby Public Health Unit (Northern Sydney LHD)

Hornsby Ku-ring-gai Hospital, Hornsby, 2077
 Phone: (02) 9485 6911
 Fax: (02) 9482 1358 (secure line)
After hours
 Phone: (02) 9477 9123
 (Hornsby Hospital)
 -ask for Public Health Officer on call

Justice Health & Forensic Mental Health Network - Population Health

PO Box 150, Matraville, 2036
 Phone: (02) 9700 3744
 Fax: (02) 9700 3747 (secure line)
After hours
 1300 076 267 (option 1)

Liverpool Public Health Unit (South Western Sydney LHD)

P.O. Box 38, Liverpool BC NSW 1871
 Phone: (02) 9794 0855
 Fax: (02) 9794 0838 (secure)
After hours
 Phone: (02) 8738 3000
 (Liverpool Hospital)
 -ask for Public Health Officer on call

Newcastle Public Health Unit (Hunter New England LHD)

Locked Mail Bag 10, Wallsend, 2287
 Phone: 1300 066 055
 Fax: (02) 4924 5704 (secure line)
After hours
 Phone: (02) 4924 6477
 (John Hunter Hospital)
 -ask for Public Health Officer on call

Parramatta Public Health Unit (Western Sydney LHD)

Locked Bag 7118, Parramatta BC 2124
 Phone: (02) 9840 3603
 Fax: (02) 9840 3608 / 9840 3591 (secure line)
After hours
 Phone: (02) 8890 5555
 (Westmead Hospital)
 -ask for Public Health Officer on call

Penrith Public Health Unit (Nepean Blue Mountains LHD)

PO Box 63, Penrith 2751
 Phone: (02) 4734 2022
 Fax: (02) 4734 3300 / 4734 3444 (secure line)
After hours
 Phone: (02) 4734 2000
 (Westmead Hospital)
 -ask for Public Health Officer on call

Randwick Public Health Unit (South Eastern Sydney LHD)

Locked Bag 88, Randwick, 2031
 Phone: (02) 9382 8333
 Fax: (02) 9382 8334 / 9382 8314 (secure line)
After hours
 Phone: (02) 9382 2222
 (Prince of Wales Hospital)
 -ask for Public Health Nurse on call

Wollongong Public Health Unit (Illawarra Shoalhaven LHD)

Locked Bag 9, Wollongong 2500
 Phone: (02) 4221 6700
 Fax: (02) 4221 6759 (secure line)
After hours
 Phone: (02) 4222 5000
 (Wollongong Hospital)
 -ask for Public Health Officer on call

Regional

Albury Public Health Unit (Murrumbidgee and Southern NSW LHD)

PO Box 3095, Albury, 2640
Phone: (02) 6053 4800
Fax: (02) 6933 9220 (secure line)

After hours

Phone: (02) 6053 4800 or 1300 066 055

Bathurst Public Health Unit (Far West and Western NSW LHD)

PO Box 143, Bathurst, 2795
Phone: (02) 6330 5880
Fax: (02) 6332 3137 (secure line)

After hours

Mobile: 0428 400 526

Broken Hill Public Health Unit (Far West and Western NSW LHD)

PO Box 457, Broken Hill, 2880
Phone: (08) 8080 1216
Fax: (08) 8080 1196 (secure line)

After hours

Phone: (08) 8080 1333 (Broken Hill Base Hospital)
-ask for Public Health Officer on call, if no answer:
Mobile: 0419 917 426

Dubbo Public Health Unit (Far West and Western NSW LHD)

PO Box 4061, Dubbo, 2830
Phone: (02) 6809 8979
Fax: (02) 6332 3137 (secure line)

After hours

Phone: (02) 6809 6809 (Dubbo Base Hospital)
-ask for Public Health Officer on call,
if no answer: Mobile: 0418 866 397

Goulburn Public Health Unit (Murrumbidgee and Southern NSW LHD)

PO Box 472, Goulburn, 2580
Phone: (02) 4825 4944
Fax: (02) 4824 1831 / 4825 4942 (secure line)

After hours

Phone: (02) 6053 4800

Lismore Public Health Unit (Mid North Coast and Northern NSW LHD)

PO Box 498, Lismore, 2480
Phone: (02) 6620 7585
Fax: (02) 6622 2151 / 6620 2552 (secure line)

After hours

Phone: 0439 882 752 Infectious Disease or
Phone: 0428 882 805 Environmental Health

Port Macquarie Public Health Unit (Mid North Coast and Northern NSW LHD)

PO Box 126, Port Macquarie, 2444
Phone: (02) 6589 2120
Fax: (02) 6589 2390 (secure line)

After hours

Phone: 0439 882 752 Infectious Disease or
Phone: 0428 882 805 Environmental Health

Tamworth Public Health Unit (Hunter New England LHD)

Locked Mail Bag 10, Wallsend NSW 2287
Phone: (02) 6764 8000
Fax: (02) 4924 5704 (secure line)

After hours

Phone: (02) 4924 6477 (Public Health Officer on call)

Appendix C – EPL No.11215

Section 55 Protection of the Environment Operations Act 1997

Environment Protection Licence



Licence - 11215

| <u>Licence Details</u> | |
|------------------------|--------------|
| Number: | 11215 |
| Anniversary Date: | 30-September |

| <u>Licensee</u> |
|--|
| CLEANAWAY INDUSTRIAL SOLUTIONS PTY LTD |
| PO BOX 203 |
| PORT KEMBLA NSW 2505 |

| <u>Scheduled Activity</u> |
|------------------------------|
| Transport of trackable waste |

| <u>Fee Based Activity</u> | <u>Scale</u> |
|---|--------------|
| Transport of category 1 trackable waste | Any capacity |
| Transport of category 2 trackable waste | Any capacity |

| <u>Region</u> |
|--|
| Hazardous Materials, Chemicals & Radiation |
| 59-61 Goulburn Street |
| SYDNEY NSW 2000 |
| Phone: (02) 9995 5000 |
| Fax: (02) 9995 5999 |
| PO Box A290 SYDNEY SOUTH |
| NSW 1232 |