



WMRR Energy from Waste Conference

2 November 2023

Presented by:
Mark Schubert – CEO & Managing Director

Cleanaway Overview

Cleanaway is Australia's largest total waste management, industrial, environmental and health services company

Key facts & figures



335
active sites



135+ licensed
infrastructure assets



5,900+
vehicles in the fleet



140+
council relationships



132K+
business customers



7,600+
employees



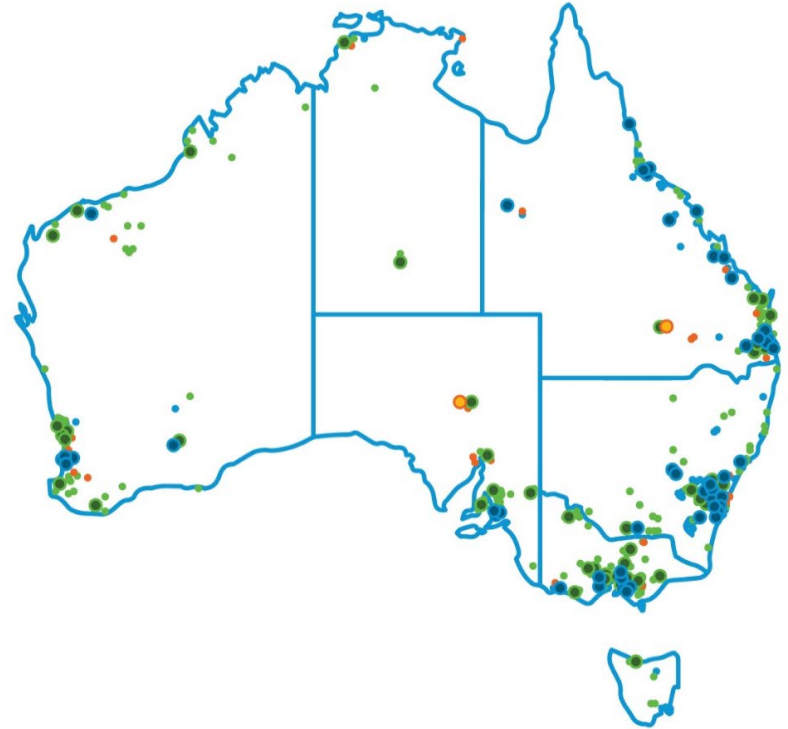
\$3bn
Net Revenue



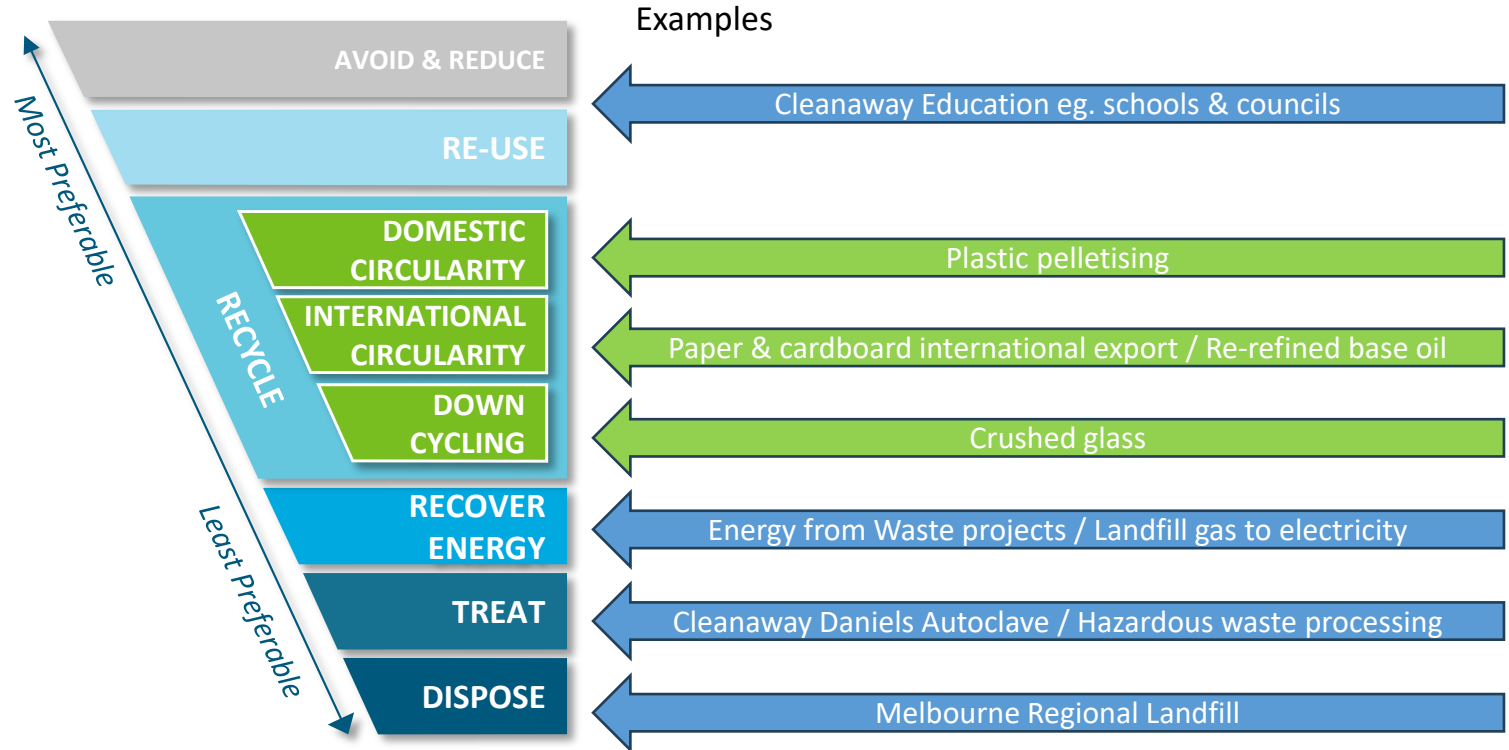
\$ 5bn
market capitalisation



Australia's leading
waste management
company



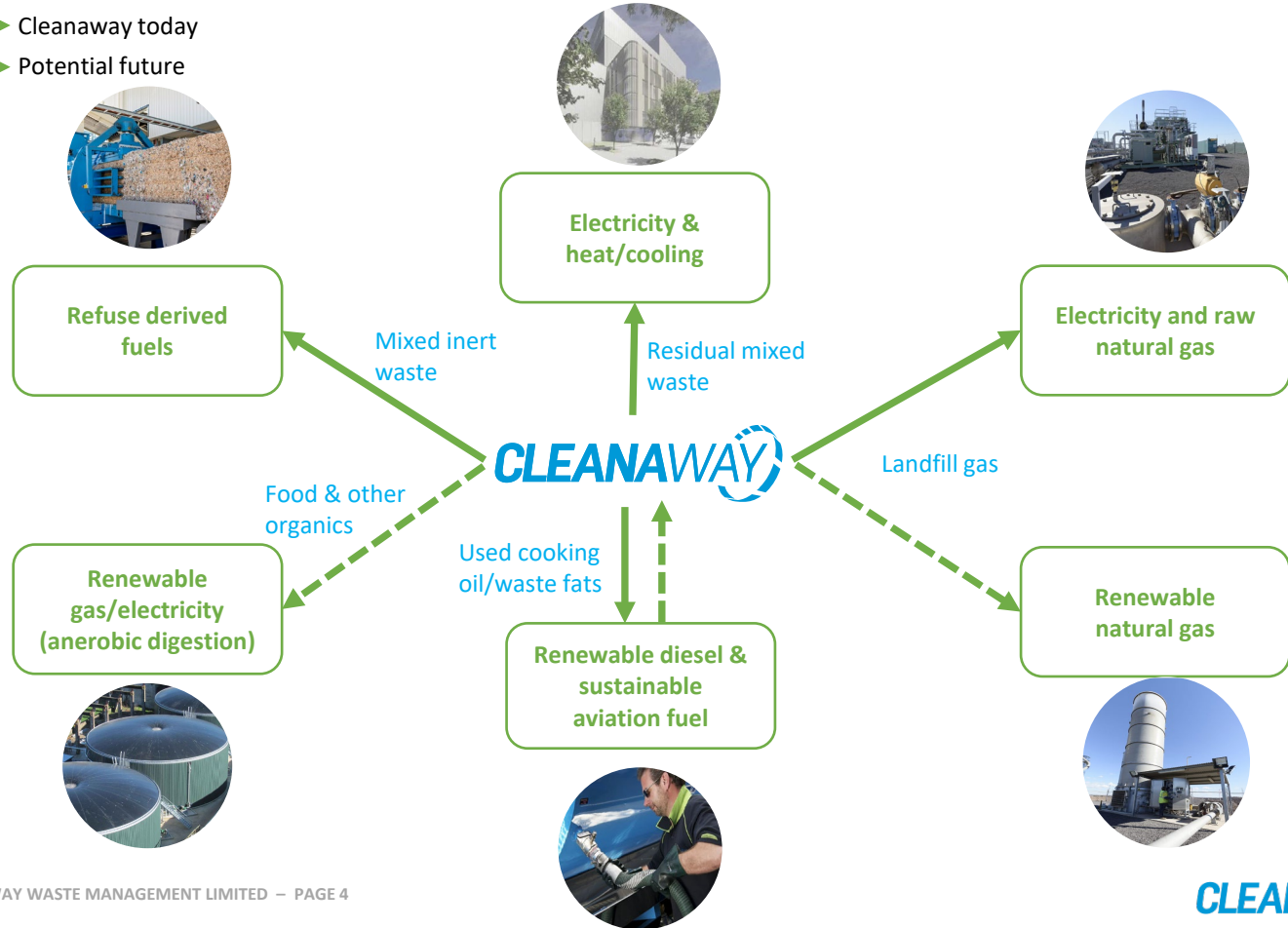
Circularity - reimagining the Waste Hierarchy



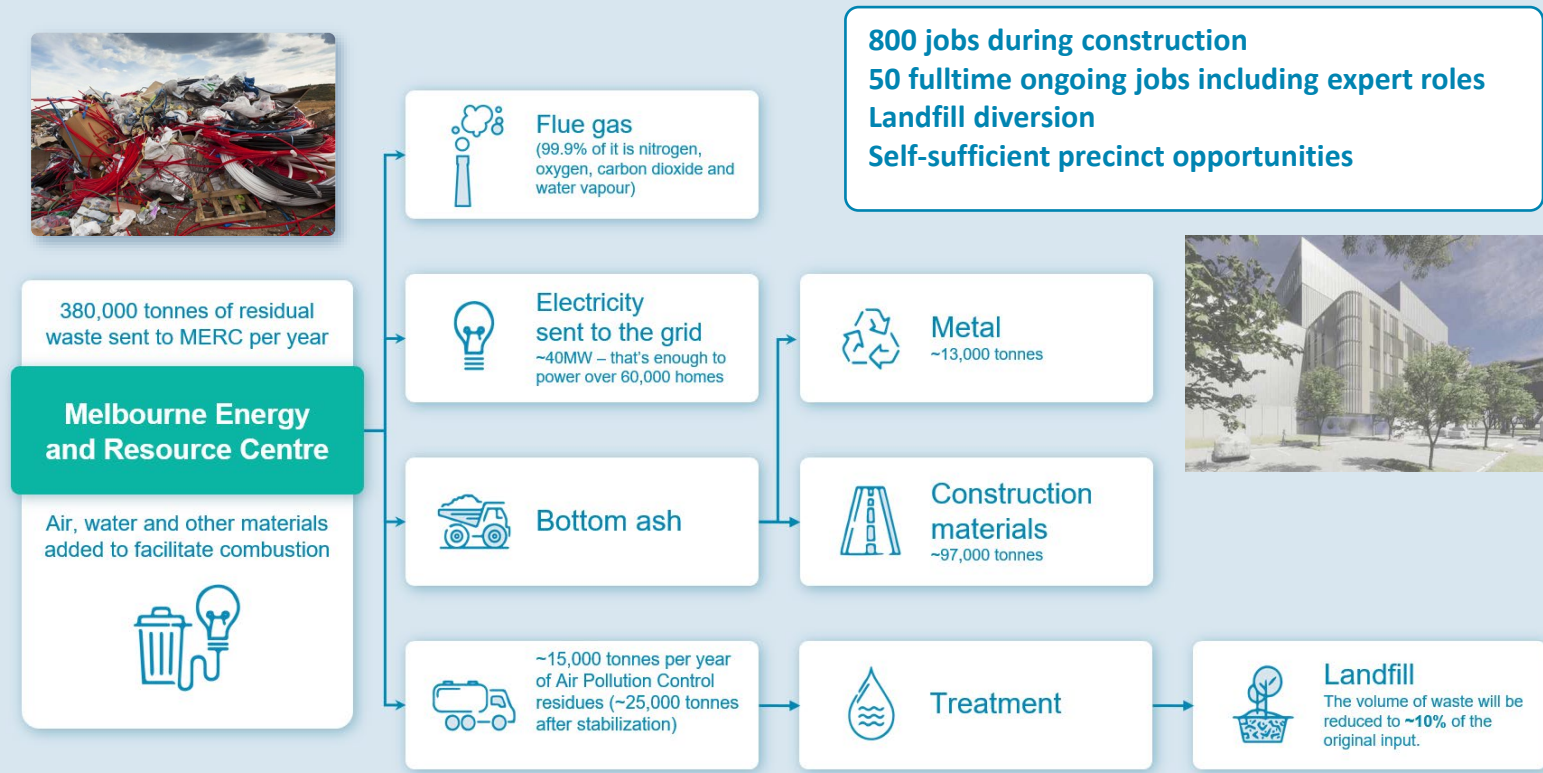
Cleanaway's renewable energy opportunities

—→ Cleanaway today

- - -→ Potential future



Energy from waste benefits



Energy from Waste emissions benefits vs landfills

WORLD 1: ELECTRICITY IS PRODUCED BY AN EfW PLANT BY BURNING WASTE



CO₂ emissions from EfW

- Direct emissions from EfW electricity plants come from burning MSW.
- Emissions that are captured from EfW plants can be feedstock for multiple productive uses.

WORLD 2: THE SAME AMOUNT OF ELECTRICITY IS DRAWN FROM THE GRID, AND WASTE IS SENT TO LANDFILLS



Emissions to generate grid electricity

Fugitive CH₄ from waste sent to landfill

VS.

- There are emissions when grid electricity is produced.
- Emissions reduce over time as the grid decarbonises.
- MSW bound for EfW plant is sent to landfills instead, creating fugitive emissions even from the best-in-class landfills.

On average, over the next 20 years, EfW results in approx. 44% lower emissions vs. landfills. The emissions savings benefit is more pronounced in the early years and reduces over time as the grid decarbonises.

Cleanaway's proposals



Where to from here?

Stable policy

No new levies, fees or taxes



Artist impressions only

Questions?