



Stawell Landfill

Community Reference Group

2.3.2023

Project Overview, Progress & Site Plan

Cleanaway have commenced cell 5 construction at Stawell Landfill in line with EPA approved design late 2023. Phase 1 (stage 1 to 3) construction works will be completed by end of March 2023 and stage 2 works will commence.

Works include:

- Placing 50:50 clay mix as initial protection layer;
- HDPE liner and geomembrane layer placement to prevent groundwater contamination;
- Cell 5
 - phase 1 (till stage 3) will be completed by March 2023 and
 - phase 2 (stage 4 and 5) will be completed in May 2023
- As built details will then be reviewed by the EPA appointed auditor and report will be submitted to EPA for approval.
- Once EPA is happy with construction details, EPA will issue approval for waste disposal via EPA licence amendment;



Planning Permit amendment – Stawell Landfill

- Cleanaway could operate for 2 hours from 10-2pm on Public Holidays (PH) and Sundays.
- Historically Statewide recycling and Cleanaway has been requesting Norther Grampians Shire Council (NGS Council) till June 2022 for extra 1.5 hours on public holidays for landfilling activities and has been approved.
- NGS Council requested we formally change our planning permit so we commenced the process to change our hours on PHs only.
- Cleanaway applied for planning permit amendment to operate for extra 1.5 hours on only public holidays only to accommodate trucks coming from other shires, to allow time for compaction and for daily cover.
- Northern Grampian Council (NGS) has granted the permit change application to operate for additional 1.5 hours on public holidays.
- Stawell landfill will operate from 10 – 1:30 pm on public holidays. (screen shot from amended permit)

Hours of Operation

15. Unless otherwise approved by the Responsible Authority in writing, the use and development hereby permitted must only operate between the hours of:
- a) 7:30am and 5:30pm Monday to Friday.
 - b) 9.30am to 2.30pm Saturday.
 - c) 10.00am to 2.00pm on Sunday for two (2) hours only.
 - d) 10.00am to 1.30pm on Public Holidays for 3.5 hours only.

Environmental Management

Noise

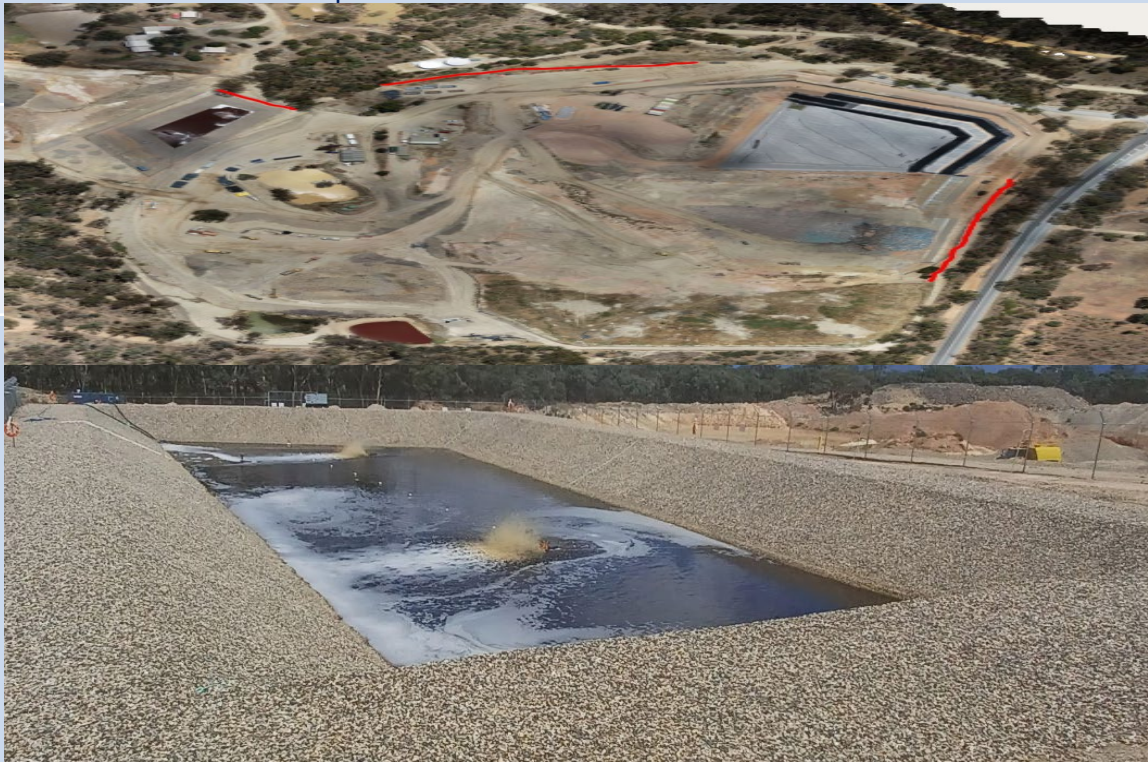
- Noise bunds around the site has been extended and improved to minimize noise from quarry, crushing, hauling and landfill activities.
- EPA has issued improvement notice to Cleanaway to generate noise remediation action plan addressing how to mitigate unreasonable noise emitted from the premises.
- Cleanaway has engaged suitable qualified consultant to develop the Noise remediation action plan for Stawell Landfill in accordance with Environment Protection Regulation 2021 and EPA Noise Protocol.

Works in Claypit:

- Past 2 months Cleanaway was carting 50:50 clay mix from the clay pit area to cell 5 for construction and 20mm crushed rock to the hardstand for sales.
- 1 Excavator and 2 haul trucks are operating in the clay pit.

Odour

- Admin controls is in place to monitor wind direction and manage potential high odourous activities.
- All odorous load will undergo deep burial as per the best practice guideline to minimise odour impacts.
- End of each day, waste will be covered with alternate daily cover approved by EPA to eliminate odour impacts. ADC is used daily and double cover on the end of week and during long weekends.
- Odour curtains are installed along Pomonal road, along northwestern corner of the active cell and next to leachate pond to minimise odour impacts to nearest receptors.
- Landfill gas extraction system is operational. This will help minimizing odour impacts from landfill gas.
- 2 aerators are operational in new leachate pong to minimise odour impacts from leachate in the new pond.



Truck wash and security around the site

- All incoming trucks with waste must exit through mandatory truck wash to minimise soil and gravel being tracked to main road.
- Security cameras have been recently upgraded throughout the site. One near the entry and rest around the site.



New Fire tank

- New 256,000 L fire tanks are operational for increased fire fighting capabilities in the event of a bushfire or landfill fire.



Dust and Fire management

- New water truck with water canon is used for dust suppression and fire fighting purposes.
- This will help us manage tip face fires and bushfire management to keep the community safe.
- Cleanaway is in contact with CFA to use our new truck for fire fighting purposes in case of bushfire emergency around the region.



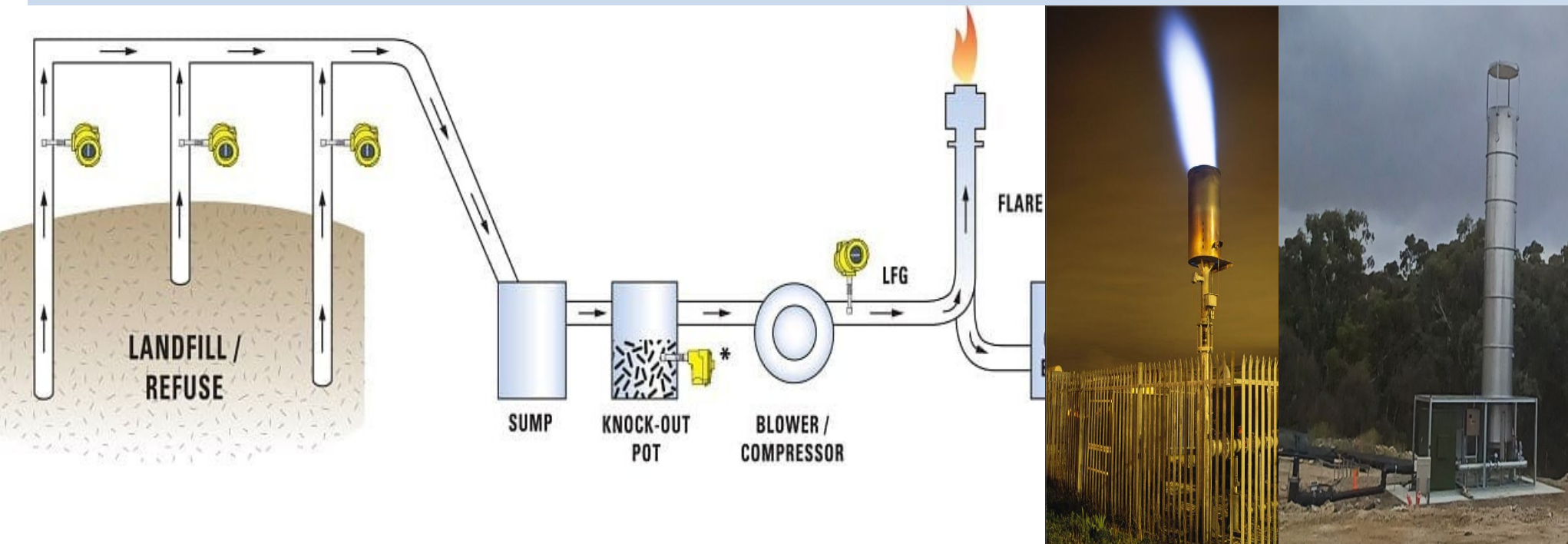
Management of Stormwater onsite

- Surface run off is captured in series of storm water dams and reused onsite for dust suppression.
- Routine gas and surface and ground water monitoring is undertaken to ensure no environmental impact from landfill operation.
- All monitoring reports are verified by EPA appointed auditors and submitted to EPA every 2 years.



Landfill Gas Extraction

- Vertical gas wells are drilled in to the closed and inactive cells. Horizontal well are being drilled into active cell to capture gas from active cell.
- Vertical gas wells from closed and inactive cells are connected to Flare. Once horizontal gas wells are installed, it will be connected to the flare. This will help in managing landfill gas odour impacts.
- Flare is primarily used for combusting excess landfill gas (methane) generated by the landfill cells.
- Permanent gas flare is operational.



Ongoing Communications

- Cleanaway will continue to provide updates to the community about the site regularly through emails, letter drops and newsletter.
- 6 monthly newsletter will be issued in June 2023.
- We appreciate your feedback and please contact us if you have any issues or if you require further clarification about our operation.

Questions?