



# ***Stawell Landfill***

*Community Reference Group*

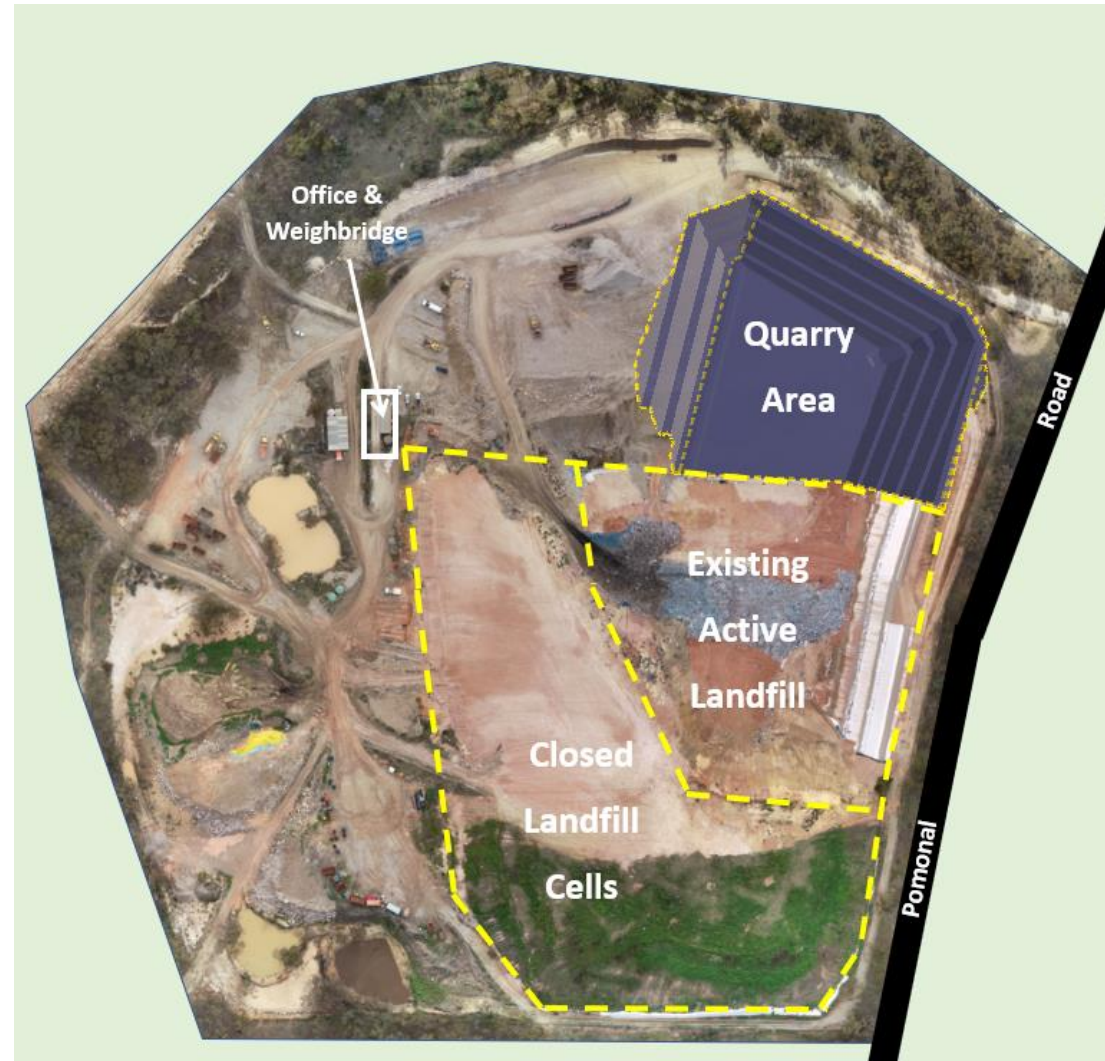
*21.10.2021*

# Project Overview, Progress & Site Plan






Cleanaway have commenced quarrying for the next cell at Stawell Landfill.

Works include:

- Drill, Blast, Load & Haul of approx. 160,000 m<sup>3</sup> of rock from the future landfill cell footprint
  - Have removed approx. 43,000m<sup>3</sup>
  - 5 blasts completed to date
  - 7-10 blasts remaining
- Rock crushing to produce
  - 20mm crushed rock



## What's involved in the works

Drilling	Blasting	Load	Haul	Rock Crushing
<ul style="list-style-type: none"><li>• Mobilise drill rig to site</li><li>• Set out of drill pattern</li><li>• Drill hole to required depth</li></ul>	<ul style="list-style-type: none"><li>• Explosives placed in pre-drilled holes</li><li>• Area is evacuated</li><li>• Explosives are detonated</li></ul>	<ul style="list-style-type: none"><li>• Excavator is used to load blast rock into trucks</li></ul>	<ul style="list-style-type: none"><li>• Trucks carry blasted material to stockpile location</li></ul>	<ul style="list-style-type: none"><li>• Blast rock is fed through special crushing machinery to produce crushed rock products</li></ul>
				

Note: Images sourced from Google and shown for illustrative purposes only. Actual plant used onsite may be different to images shown.

## *Blast Video*

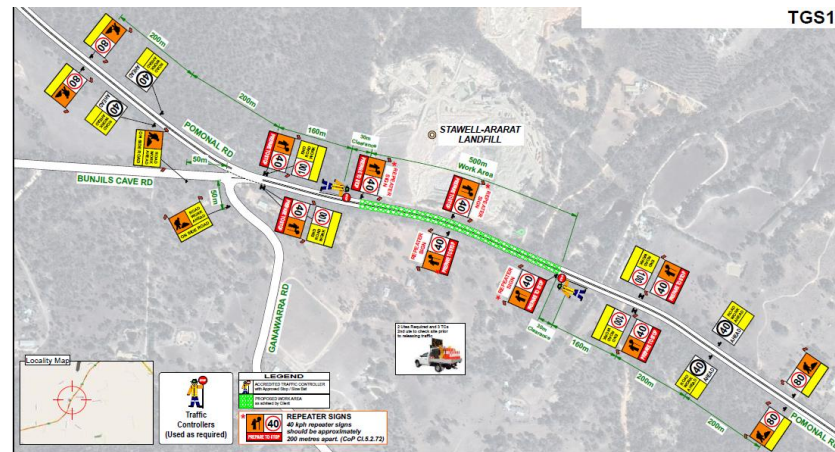


# Project Timeline

Task	Key Date	2021						2022							
		July	Aug	Sept	Oct	Nov	Dec	Jan	Feb	Mar	Apr	May	Jun	July	Aug
Contractor Mobilisation	Completed July 2021	✓													
Load & Haul	From 26/7/21	→													
Drill & Blast	From 2/9/21			✓	✓										
Rock Crushing	From 26/7/21	→													
Expected Quarry Completion Date	End of January 2022							★							
Expected Rock Crushing Completion Date	End of April 2022										★				
New Cell Construction	Follows Quarry Completion														→

# Blasting Days & Evacuation Requirements

- Blasting will be on Tuesday/Wednesday and/or Thursday between 12pm – 3pm.
  - Pomonal Road will be closed to traffic during blast (up to 5-minute delay is expected while the blast is undertaken)
  - Current planning is for blasts to occur between 12pm - 3pm to reduce any impacts to the school bus route along Pomonal Road
- We anticipate there will be one blast per week for the duration of the project, with some weeks requiring up to two blasts.
- During a blast, an exclusion zone around the quarry area (including the landfill) of up to 200m will need to be evacuated for safety reasons.



# Environmental Management

## Vibrations

- Vibration monitoring will be undertaken during all blasting activities

## Road Users

- During blast, Pomonal Road will be closed to ensure the safe exclusion zone is maintained around the site
- There may be a delay of up to 5 minutes while the blast is undertaken
- Blasts are expected to be conducted between 12pm and 3pm to ensure no impact to the school bus route
- We do not expect any additional truck movements once all equipment is onsite

## Rock Crushing

- Rock crushing will be undertaken from newly constructed hardstand (paved area) lower down in the cell to minimise noise impacts from crusher.



## Litter

- 6m litter net was installed in October 2021 on eastern side of the site to control wind blown litter on to Pomonal Road, to increase protection for any litter that might escape the existing fence.



## Dust

- Dust impacts are regularly assessed (visual monitoring).
- Water cart available for continual dust suppression during the project.





# Noise

- Noise bunds around the site has been extended to minimize noise from quarry, crushing, hauling and landfill activities.
- Following a noise complaint for the works in clay pit area, a new noise bund has been constructed in clay pit area and the noisy dozer has been replaced with newer and quieter one.
- Contractors on site will undertake regular noise monitoring for blasting activity



# Management of Stormwater and Leachate Collection System

- Surface run off is captured in series of storm water dams and reused onsite for dust suppression.
- Leachate from completed and active cells is pumped into the leachate dam and is regularly monitored to maintain safe freeboard. Contingency plan in place to dispose leachate to the authorized place if required.
- Quarterly surface and ground water, leachate, gas monitoring is undertaken to ensure no environmental impact from landfill operation and monitoring report are submitted to EPA.



## *Ongoing Communications*

- Cleanaway will continue to provide updates to the community about the site regularly through emails, letter drops and newsletter.
- 6 monthly newsletter will be issued in December 2021.
- Once further blasting dates are confirmed these will be communicated via email & letter drop.
- We appreciate your feedback and please contact us if you have any issues or if you require further clarification about our operation.

Questions?