

# Meeting minutes

## Meeting 1: MRL CRG 2021

<b>Date:</b>	Thursday 20 May 2021
<b>Time:</b>	6.30pm – 9:00pm
<b>Location:</b>	Community Information Centre, Melbourne Regional Landfill, Christies Road, Ravenhall

Meeting called by	Cleanaway
Type of meeting	Melbourne Regional Landfill Community Reference Group (MRL CRG)
Facilitator	Susan McNair, Currie
Notetaker, Technical assistance	Ryan Ong, Currie

### Invitees

#### Attendees

#### **Community**

Sharon Lee, Gary Mullan, Michelle Mullan

#### **Local Government**

Bob Baggio – Melton City Council

Cr Bruce Lancashire – Brimbank City Council

#### **Department of Justice**

Jesse Parsons-Jones – Environmental Compliance Advisor

#### **EPA**

John Downing – Senior Environment Protection Officer

Alistair Nairn – Senior Stakeholder Engagement Advisor

Peter Giang – Field Specialist, Major Industries

Steve Lansdell – Regional Manager, Western Metropolitan Region

#### **Cleanaway**

Bruno Pronesti – Branch Manager

Olga Ghiri – Stakeholder & Community Engagement Manager

Alaa Abou-Antoun – Engineering Manager

Kate Sims – Environmental specialist

Meldina Klehic – Project Manager

Chris Peska – Senior Environmental Business Partner

Oscar Sendin Henderson – Project Engineer

	Jude Jerome – Technical Officer
Apologies	Cr Bob Turner Marlene Gorman Vahid Ehsani
<b>About these minutes</b>	
These minutes and supporting information are in line with the agreed Terms of Reference. Any concerns/queries about papers supporting the MRL CRG should be raised with the Chair/Facilitator, Susan McNair by emailing <a href="mailto:susan@curriecommunications.com.au">susan@curriecommunications.com.au</a> .	

### Meeting agenda and minutes governance

- Meetings held every three months
- Quorum = 5 members (including a minimum of 3 community members, 1 Cleanaway representative and the Chair)
- DRAFT minutes to be provided the community members within two weeks of meeting for comment
- Review period for DRAFT minutes is 21 days (3 weeks)
- Finalised minutes to be distributed and posted on Cleanaway website within 5 working days of finalisation.
- AGENDA items to be proposed to Chair seven working days before the next meeting.
- AGENDA and papers to be distributed five working days before next meeting.

*Meeting opened: 6:30pm*

### 1. Welcome

---

S. McNair opened the meeting, welcomed participants and explained how the meeting would proceed.

S. McNair welcomed new members and noted the resignation of previous CRG members Mia Marevic and Marion Martin. Attendees introduced themselves and apologies were given.

S. McNair reminded participants that the meetings are intended to be respectful, constructive and open. Participants are encouraged to listen and participate in the conversations and are expected to take information discussed during the meeting back to their respective networks, peers, and organisations.

S. McNair reviewed past minutes and confirmed all items were completed except information on the seeding mix. The group approved the current Terms of Reference.

**ACTION 210218\_1: A. Abou-Antoun to provide the group with details of what seeding mix is being used to seed the capped cells.**

### 2. Site Operations

---

K. Sims and A. Abou-Antoun submitted a presentation (see Attachment 2: Cleanaway presentation).

**K. Sims provided an environmental compliance and operations report:**

- Landfill gas collection update
  - Cleanaway is always trying to install new gas infrastructure to meet environmental compliance. As long as gas is being extracted, we can make sure it is kept on site and converted into electricity.
  - 21 vertical extraction wells have been installed in Cell 4A to help with gas extraction.
  - Cleanaway is looking at installing an extension on the main gas header line. This supports future efforts to tie into horizontal wells in 4C.
- Gas plant expansion update
  - Cleanaway has been granted works approval for the new biogas plant, which is used to convert extracted gas into electricity. Internal discussions are ongoing on how the works will progress.
- Working face and odour management
  - Cleanaway monitors the working face in a number of ways. It conducts drone flyovers 1-2 times a week to make sure they've got the right face size. As well as using new technology like GPS markers that take measures three times in a 24-hour period.
  - All Cleanaway operators must sign the live working face management plan which sets out the rules and procedures for the working face operation.
  - Cleanaway is seeking approval to use a 'Tarpomatic', a large sheet that can be pulled over the working face to maintain compliance and reduce the size of the face.
  - Cleanaway is also seeking approval for a spray cover which will also help Cleanaway maintain compliance for the working face.
  - Cleanaway has installed an odour curtain on the northern nets of 4C1 and 4C2.
- Leachate management
  - Last year, 13 new sump redrills were put in.
  - Cleanaway is now at the point where it has drawn the leachate levels down to a where they can't get any lower. Cleanaway is going to trial a new pump to understand if the levels can be drawn down further and maintained with the alternative pump.

**K. Sims responded to questions from the group.**

- S. Lee: How easily can the tarp be rolled over the working face?
  - K. Sims: We will be training people to do it and there are currently already staff who are trained. It is relatively easy for someone to do once trained. It will act as a safety net. During peak hour, if we are nervous about the site, we can pull the Tarpomatic over.

- A. Abou-Antoun: It isn't a permanent solution, it is just a temporary one which we can fall back on it if the need arises.
- M. Mullan: Those two new technologies are about remaining in compliance, does that mean that there is something deteriorating that is putting you out of compliance?
  - K. Sims: They are just safety nets for us. Currently, our operators are very good at putting on the daily cover. For us, it's about minimising any odour or litter escape.
- S. Lee: When was the last EPA drone check of the landfill size done?
  - J. Downing: That was done two weeks ago.

**A. Abou-Antoun presented an update on the landfill fill plan and construction:**

- Landfill operation
  - A heatmap of the height of the landfill shows that it's about 10-12 metres high across 4C1 and 4C2.
  - Cleanaway spreads the waste to grade to achieve compliance levels in terms of height before the compactor compacts the waste.
  - Stage 3 of the batters is complete. These batters help manage odour but also create a solid surface for rainwater to shed off. Usually rain turns into leachate, so by intercepting the water away early it helps us prevent leachate.
- Construction update
  - Cell 4C1 and 4C2 were both completed in November. 4C3 is the next to be built over July 21 through to February 22.
  - Each cell usually takes 7-9 months to build based on a 7-8 ha cell footprint. For 4C3, Boral is taking rocks out for the quarry leaving us with empty land. We will engineer a liner to get approved by the EPA. We expect practical completion by 28 January 2022, with EPA approval of the liner by 11 May 2022. This gives us a three-and-a-half-month buffer before 4C1 and 4C2 reach capacity.
  - A new leachate pond is currently undergoing a planning permit. Cleanaway is looking to build another as part of its business-as-usual activities. Leachate levels are being managed at the moment, but it is important to stay on the front foot. Council initially rejected the leachate pond planning application despite the planning department approving the location following review of technical supporting reports. Cleanaway plans to lodge a VCAT application to retain current location as this is the most viable option from a community and environmental perspective.
- Landfill remediation plan
  - The rehabilitation plan is with EPA for auditor verification. We are in the tender phase at the moment. Our budget has so far been approved - \$9.9 million for stage 2 capping over the next 2 months. That will be continuous each year as we close out stage 2, 3 and then stage 4.

**A. Abou-Antoun responded to questions from the group:**



- B. Lancashire: How are you taking measurements of the landfill height?
  - A. Abou-Antoun: We track it through the Vision Link technology.
- B. Lancashire: Can you confirm whether there will be enough top cover for trees to be planted once the landfill is capped?
  - A. Abou-Antoun: When we cap the site, it will just be 1-2 metres of soil to meet compliance. Afterwards we can add more soil for trees, if that is the ultimate goal. There are 30 years of post-closure, so our current goal is just to get EPA sign off.
  - M. Klehic: Planting trees lines up with the current plan and the contours that were approved by the Council. Whatever is in the current landscape plan will dictate what we'll install.
- S. Lee: A previous Cleanaway representative said you can't plant trees because of the soil quality, is that true?
  - A. Abou-Antoun: We would need planning approval to go higher and have more soil for trees. There will be 30 years of post-closure management where nothing can happen whilst the site gets treated. After 30 years, this will be possible.
- B. Baggio: Would you expect that after 30 years the land would be used for passive recreation?
  - B. Pronesti: If you look at our other sites, two became golf courses. One became a large park with bike paths and so on. It is likely that it will be vested in council.
- S. Lee: Will you be using the toxic soil to cover the working face?
  - A. Abou-Antoun: If it meets the licence, then yes.
- B. Lancashire: How do you make sure that you don't penetrate through the bottom liner with the leachate bores?
  - A. Abou-Antoun: We have a lot of designers and engineers on site collecting data at all times. It helps us know the levels at each location so we know how far we can drill.
  - K. Sims: We also get it surveyed halfway through the drilling to make sure we won't go beyond the bottom liner.
- S. Lee: What are the current leachate levels?
  - K. Sims: 300 mm. We make sure we are at the 300mm mark or below which is our compliance level. Every fortnight we get these monitored. Re-drills are a separate situation, we work with the EPA to get to different levels with those cells.
- S. Lee: Last time we met, the leachate issue was not resolved in terms of the depth, has it been resolved?
  - K. Sims: Stage 2 of the redrills is still being discussed with the EPA. We want to trial a new pump to understand if the levels can be drawn down further and maintained with the alternative pump. There is one sump in stage 4 that we are having trouble with.

- K. Sims: We will install a new leachate in August line which will run around the back of the new cell this will allow the leachate to take the path of least resistance rather than all the leachate on site flowing in one direction.
- M. Mullan: We had recent rain and a lot of flooding, how did the leachate ponds cope?
  - A. Abou-Antoun: We stayed on top of it, the operators did a great job to evaporate most of the leachate. We managed to keep the ponds very low beforehand to mitigate the problems from the rain. We were actively pumping beforehand to manage this risk.

### **3. Environmental compliance**

---

#### **J. Downing provided an update on compliance:**

- In the past three months there was only one odour report alleging that Cleanaway was the source. However, after investigating it was outside the possible range for Cleanaway to be responsible. This has been a good improvement.
- EPA continues to conduct regular compliance inspections and drone surveys every month.
- There are new environmental protection laws that will come into place on 1 July which will give EPA enhanced powers to prevent risks to environment and health. This means we can offer stronger sanctions and penalties
- EPA has completing a Major Industries Assessment (MIA), a roots-up assessment of the operations of MRL. The assessment outlines 59 recommendations and 18 requirements to improve MRL's management of risks to the environment and human health.
- No sanctions have been issued in the past three months, however a number of non-compliances were detected during the MIA which are under investigation.

#### **J. Downing responded to the following questions:**

- M. Mallan: How much can the penalties differ from 1 July?
  - J. Downing: The difference is from approximately \$8,000 now up to above \$400,000 after 1 July.
- B. Lancashire: What negotiations have you had with Cleanaway to ensure they achieve your requirements by 1 July.
  - J. Downing: It is not up to EPA to negotiate, we set the standard and Cleanaway is expected to manage their compliance.
  - C. Peska: Cleanaway is doing a lot of work to assess where we are placed against the new Act. I'm working with a lot of those branch managers, regional managers and general managers to identify where we're doing well and where we need to do more work to meet the new standard.
- S. Lee: If Cleanaway is still breaching the leachate requirements by 1 July, what will EPA do?

- J. Downing: That pollution abatement notice (PAN) has been served. We are waiting for Cleanaway to reach those levels.
- S. Lee: What's the deadline to comply on the leachate requirements? The leachate has been a problem for many years.
  - J. Downing: They have redrilled 13 of them and brought the levels down. Cleanaway are trialling the pump in two select bores which will inform how we proceed in all 13 re-drills.
  - K. Sims: We want to close out this PAN. We have done a lot of data collection and risk assessments to understand the risk. When we get the results from the new trial pump, we will share it with the EPA with the risks and what we can practicably do.
  - K. Sims: The trial will take a couple months. Once we get the results, this will inform how Cleanaway proceeds and which pump will be used in the re-drills.
- M. Mallan: What I'm hearing is that this is a moving deadline and Cleanaway still isn't compliant. As a representative of the community, shouldn't the EPA's sanctions come into play here?
  - J. Downing: We can't issue a sanction when there is a good reason why Cleanaway isn't yet compliant.
- M. Mallan: What was done earlier to rectify this issue?
  - K. Sims: Significant planning and risk assessments. We had to weigh up the pump options. If we used the Blackhawk pump it would take a long time to drop the leachate levels, we would still be pumping. This is why initially we chose the airwell pump to draw down the leachate quicker.
  - S. Lee & M. Mallan: A five-year extension on compliance with no penalty is not okay. EPA needs to enforce the requirements.
- S. Lee: Can you give us a copy of the MIA report?
  - K. Sims: We can provide this.

**ACTION 210520\_01: Kate Sims to provide community with EPA Major Industries Assessment report.**

**P. Giang (EPA) provided a report on the Major Industries Assessment:**

- An MIA is done to determine how well a site is managing their compliance risks. The assessment looks at a site's environmental systems, operations, environmental impacts, and activities to control these impacts. An MIA covers major industry sites – sites with a large quantity of dangerous goods, wastes or particularly complex processes.
- As part of an MIA, the EPA first reviews the history of a site, historical non-compliances, and relevant documentation.
- Secondly, EPA will usually meet with the site operators to ask questions. Due to COVID-19, these meetings were held online. EPA also conducted two onsite inspections.
- Lastly, the EPA then takes that information and conducts an analysis before finalising a report with recommendations and requirements.

- The scope of the MIA covered:
  - the landfill, environmental and asset management systems;
  - leachate operation including pumps, sumps and levels;
  - surface, storm, and ground water;
  - existing and future PANs;
  - soil and anything underground;
  - odour management;
  - waste acceptance;
  - LFG management; and
  - approach to compliance.
- The final MIA report, issued in March, outlined 59 recommendations and 18 requirements to improve MRL's management of risks to the environment and human health.

**P. Giang responded to community questions:**

- M. Mallan: Are these assessments random or scheduled?
  - P. Giang: Some are random, some are scheduled. We conducted 50 MIAs across the state in the last two years. They take about 6 months to do and are quite complex.
- M. Mallan: Should there be more frequent MIAs for this site?
  - P. Giang: For the sites we assess, we do follow ups on each of the recommendations. The work doesn't stop after the MIA. I am still working on sites from a couple of years ago. It is an ongoing body of work.
  - A. Nairn: This is a non-standard process. EPA identifies significant sites across Victoria that it investigates more deeply. Typically, the site will be managed through the licence.
  - S. Lansdell: This is the first time we've been able to focus on a landfill of this size and scale in an MIA.
- S. Lee: What has been done about the PAN on methane levels?
  - J. Downing: Cleanaway now has one more bore to install and they have to do an LFG risk assessment. They will come back to us with a remediation action plan.
  - S. Lee: What's the deadline?
  - K. Sims: 30 June 2022 as the task is not an easy undertaking. EPA has given us until September 2022 for the remediation plan.
- S. Lee: The PAN regarding the methane problems has been going on since 2019. Why has it not been resolved yet?
  - K. Sims: That PAN involved drilling more perimeter bores and was closed. We had one more bore to delineate the gas on the eastern boundary but it took

one year to get approval from V-Line and Parks Victoria to drill that. We are nearly at the stage where we can start drilling and delineate the gas.

- S. Lee: As the methane PAN was closed, does this mean the EPA will close a PAN even though the situation has not been resolved?
  - J. Downing: Yes.
  - K. Sims: The PAN that was closed was to get more bores in and monitor more data. These requirements on this PAN were met which is why it got closed. The PAN did not say to solve the gas migration problem. Now we have a new PAN to deal with the extraction of the gas, as the bores have been monitored for some time. It is a staged approach.
- B. Lancashire: Are the conditions of the new EPA licenses changing? Will there be public consultation?
  - S. Lansdell: There won't be much community consultation at the start because the focus will be transitioning everything to reflect the new modern duties.
  - B. Lancashire: To make it clear, it's important to make sure the community is aware of the additional enhancements that are taking place.

**ACTION 210520\_02: EPA to share the new licence and EPA's Statement of Regulatory Intent, relating to the new expectations from 1 July.**

- J. Parsons-Jones: Does the new licence go online 1 July?
  - C. Peska: There is a transition period for all our trucks and licence facilities. We are going through a process to confirm those new conditions and waste codes.
  - A. Nairn: The new legislation has a public register so licensees and sanctions will all go up on a public register so the community can see everything in a more transparent way.
  - S. Lee: Can you send me a link to that register.

**ACTION 210520\_03: EPA to share link to new public register to community members when it is live on 1 July.**

- G. Mallan: When was the assessment done?
  - P. Giang: It was started in November last year. It took 5-6 people and was finalised in March.
- G. Mallan: Will you do further assessments if new facilities or issues arise?
  - P. Giang: Those other assessments will be handled by other works approvals teams or otherwise managed under the licence.
- M. Mallan: What's the timeframe for remediation of the issues identified in the MIA?
  - S. Lansdell: All the issues identified have notices and timeframes under them.
  - M. Mallan: For common knowledge, what's the average timeframe?
  - S. Lansdell: It really depends.

- C. Peska: As part of the natural justice process, a draft of the notices are issued to us first so we can understand the requirements and timelines and confirm that they are achievable. Timeframes are put to us, and then we have to respond. If we ask for an extension, we have to provide good evidence and justification, and that we have tried everything possible.
- J. Downing: EPA can extend a notice indefinitely on this basis. However, we wouldn't extend a notice if there wasn't a very good reason.
- S. Lee: Who made the decision to award the toxic waste licence to Cleanaway?
  - S. Lansdell: We have lots of information about a decision EPA made recently about Cleanaway taking soil from the West Gate Tunnel project. None of us here were involved, but I would encourage you to look at the website.
  - S. Lee: I have looked at the website and it is too complicated. Can you arrange to have that decisionmaker come and talk with us next meeting?
  - S. Lansdell: We can bring a specialist to the next session.

**ACTION 210520\_04: At next meeting, EPA to have a specialist present on the decision to approve Cleanaway's Environmental Management Plan (EMP) application proposing to receive and manage soil and rock (spoil) generated from the West Gate Tunnel Project.**

- S. Lee: With this new licence, does this mean that Cleanaway can now take any toxic material?
  - S. Lansdell: The approval is specific to tunnel boring material, so it is very specific to the Western Tunnel project.

#### **4. Community engagement/awareness**

---

O. Ghiri presented on community engagement and awareness, key points include:

- A social media and advertising campaign was conducted in April and May to encourage some new blood and fresh faces on our community group. The social media ads reached over 11,000 people.
- Cleanaway also advertised across local publications – one of those was the Caroline Springs update that is dropped to over 25,000 households.
- Cleanaway received five expressions of interest, though unfortunately only two came to this meeting.
- If Cleanaway wins the tender for the West Gate Tunnel Project (WGTP), it will run more community information sessions face-to-face in the Community Information Centre at Ravenhall.
- A formal letter was written to CEOs and Councillors of Melton and Brimbank Councils. The letter invited them to come for a site tour and briefing on the West Gate Tunnel project. Brimbank has responded encouraging councillors to make a time to come out onto the site. There has not yet been a response from Melton Council.
- Cleanaway will be advertising the MRL Community Fund soon, an update will be provided at the next meeting.

**ACTION 210520\_05: O. Ghiri to provide an update on the community fund at the next meeting.**

**O. Ghiri responded to community questions:**

- S. Lee: Are you doing publicity outside of Caroline Springs? Tarneit, Mt Atkinson, Fraser Rise?
  - O. Ghiri: Yes, and Plumpton as well. There's a whole list of residential areas we targeted, close to over 100,000. Unfortunately, we didn't get the interest we wanted. I can't force them, it's great that Michelle and Gary are here tonight. We will keep trying.
- S. Lee: Can I get a map of the toxic dump, where it will get dumped and so on?
  - O. Ghiri: We letter-dropped a brochure that explained our proposal for the WGTP in great detail and we also extensively promoted our website as a source for more information. The map you're referring to was included in our briefing to the CRG held last year and I will resend you that information.

**ACTION 210520\_06: O. Ghiri to provide community members with brochure containing information on Cleanaway's proposal to manage tunnel spoil from the West Gate Tunnel project.**

**5. Next meeting and meeting close**

---

- Next meeting scheduled 19 August – anticipated to be in person.
- Minutes and reapplication information to be circulated to the group.

*S. McNair closed the meeting.*

## Attachment 1 – new and ongoing action items

<b>New and ongoing actions items as at 16 June 2021</b>	
<b>ACTION items</b>	<b>Update</b>
<b>ACTION 210218_1:</b> A. Abou-Antoun to provide the group with details of what seeding mix is being used seed the filled cells.	To be provided at next meeting.
<b>ACTION 210520_01:</b> Kate Sims to provide community with EPA Major Industries Assessment report.	To complete and provide an update at the next meeting.
<b>ACTION 210520_02:</b> EPA to share the new licence and EPA's Statement of Regulatory Intent, relating to the new expectations from 1 July.	To complete and provide an update at the next meeting.
<b>ACTION 210520_03:</b> EPA to share link to new public register to community members when it is live on 1 July.	To complete and provide an update at the next meeting.
<b>ACTION 210520_04:</b> At next meeting, EPA to have a specialist present on the decision to approve Cleanaway's Environmental Management Plan (EMP) application proposing to receive and manage soil and rock (spoil) generated from the West Gate Tunnel Project.	To be provided at next meeting.
<b>ACTION 210520_05:</b> O. Ghiri to provide an update on the community fund at the next meeting.	To be provided at next meeting.
<b>ACTION 210520_06:</b> O. Ghiri to provide community members with brochure containing information on Cleanaway's proposal to manage tunnel soil from the West Gate Tunnel project.	To complete and provide an update at the next meeting.



--	--

## Attachment 2 – Cleanaway presentation



## Environmental Compliance Update

### Landfill Gas Collection Update

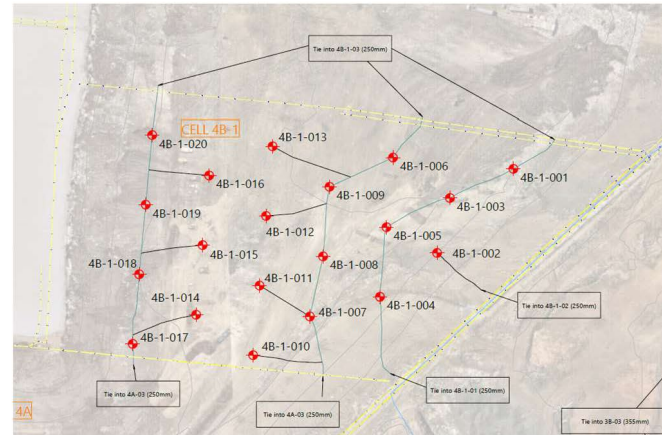
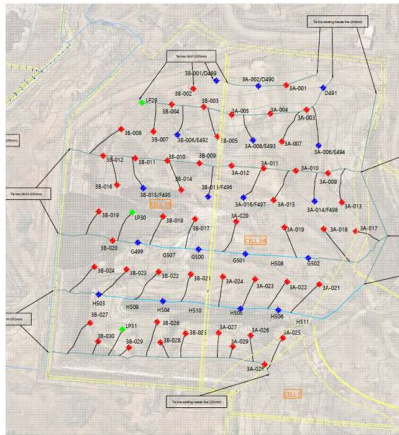


- The installation of gas field infrastructure in stage 3 and 4 is complete.
- 21 vertical extraction wells have been installed in Cell 4A to mitigate gas control on site.
- Installing head works and flow lines the next stage for the wells.
- Gas sent to biogas plant engines and flares.

## Environmental Compliance Update

### Landfill Gas Collection Update

- Planned gas extraction well works in stage 3 and 4
- Header line extension planned to allow for future tie into horizontal wells in 4C
- Currently in design discussion phase – header line path
- Works to planned to commence in Aug 2021





## *Operations Update*

### *Gas Plant Expansion*

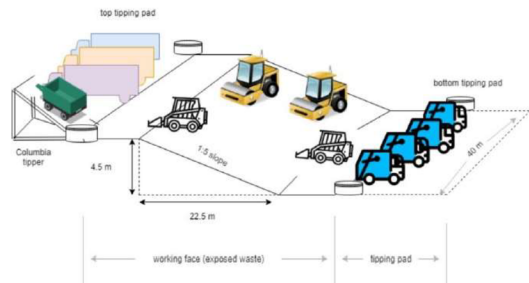
- Install 8 new landfill gas generator modules
- Double power generating capacity to 68,600MWh of electricity per year
- Mitigate over 220,000 tonnes of greenhouse gas emissions per year
- Approvals: Works Approval Granted



## Operations Update

### *Working Face Management and odour management*

- Safety, Odour, Litter & Vermin
- Waste Compaction - life of landfill, odour reduction, settlement and stability
- Technology - (Visionlink and Propeller) – Field planning, compaction, Face size
- Weekly in-house drone fly overs
- Daily odour inspections (perimeter and site)
- Face measurements - using handheld GPS
- Management Plan in place - Live document
- Odour curtain – Northern nets 4C-1 & 4C-2



## Leachate Redrills in Stage 2

Current status of works:

- The 13 re drill wells have been installed with both leachate and gas extraction (dual) – July/Aug 2020.
- Gas extraction to maintain environmental control.
- Leachate in stage 2 continues to be drawn down, however, “equilibrium” has been reached.
- A pump trial to be conducted using a different type of pump.
- Aeration treatment is common practice in Australia.



## *EPA Approvals – A Better Environmental Outcome*

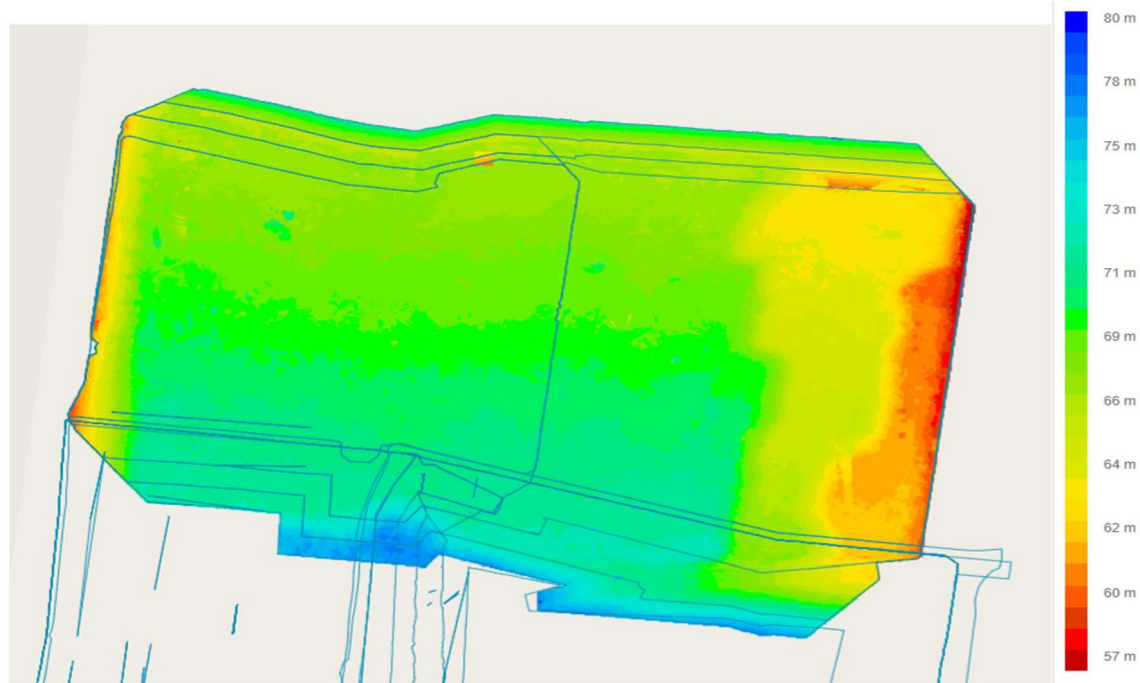
- **Tarpomatic** – Cleanaway will be seeking a trial for the use of a tarpomatic cover which will assist in remaining compliant with Licence Condition L8.
- **Spray Cover** – Cleanaway will be seeking a trial for the use of a spray cover which will assist in remaining compliant with Licence Condition L8.
- **Baled waste** – Currently receiving baled waste which is deposited directly into the waste mass, however, the twine on the bales is causing safety concerns for the yellow gear. Cleanaway are proposing to stack the baled waste at the edge of the cell (covered) and place the 6m litter nets on top, this will also assist in capturing windblown litter as the nets will sit higher.



## Landfill Fill Plan Update

*Fill progression – Lift 4 has begun in 4C1 and Lift 3 currently being placed across Cell 4C2*

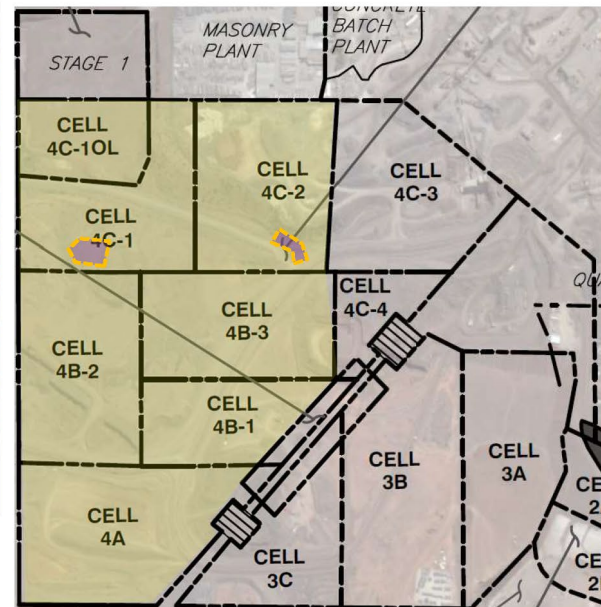
Elevation (Australian Height Datum - AHD). Note Cell base level is approximately RL55m AHD



## Landfill Fill Plan Update

*Stage 4 Currently finalizing (lift 3 and 4)*

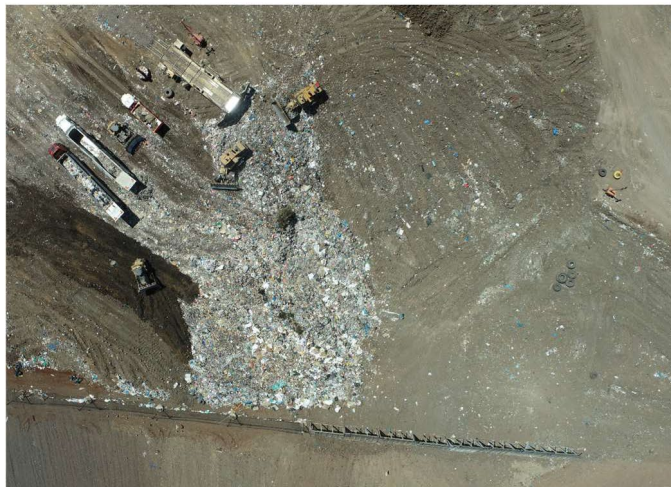
*Yellow highlight: extent of open face at any given time during waste operations.*



## Landfill Fill Plan Update

### *Stage 4 Currently finalizing*

*Active face is limited to 1,800 sqm and is continuously moving within the Licenced cell. The face size limit is maintained through progressive daily cover soils placed simultaneously once the waste lift has received adequate compaction and trimmed to grade.*

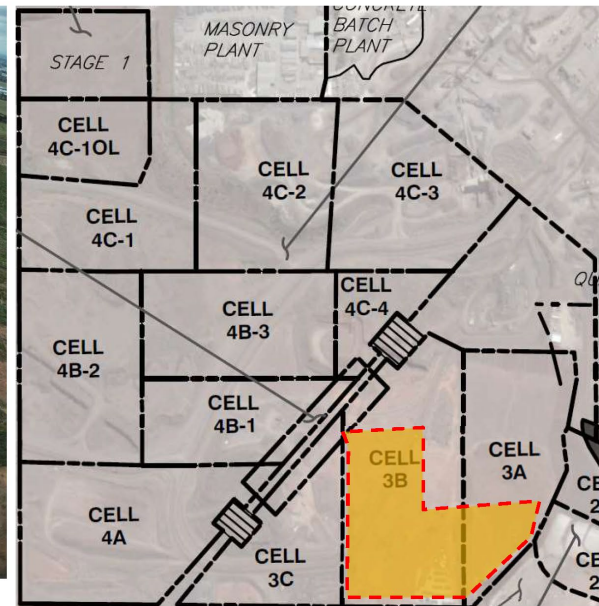




## Landfill Fill Plan Update

### Stage 3 dressing of external batters

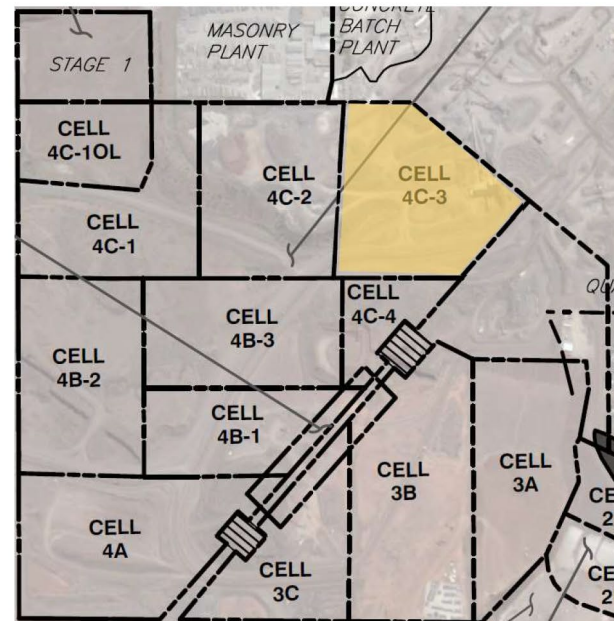
*As good practice cover added on the batters to assist with odour control and minimizing leachate generation (via shedding off stormwater away from waste).*



## Construction Update

### Upcoming Cell 4C3

- Early works have already commenced by Boral to hand over cell (bulk out and decommissioning of redundant quarry plant): March - June 2021
- Official cell liner construction start date July 2021
- Cell completion/Licencing May 2022





## Cell Status and PC Dates (4C3)

Percentage complete:

- Boral Bulk Out: 60% complete
- CEA submission: 100% (**Approved**)
- Subgrade works: 0% complete
- Compacted Clay Liner: 0%
- GCL/Geomembrane: 0%
- Geotextile Cushion: 0%
- Leachate Drainage 0%
- Geotextile Filter: 0%

Key Milestones / Items	Cell 4C1
Practical Completion Date	28-Jan-22
Inclement Weather Allowance	4 weeks
Auditor Sign-off	28-Feb-22
EPA Approval	11-May-22
Airspace reached by:	01-Sept-22
Airspace Buffer (relative to 4C2)	3.5 months



## Cell Status and PC Dates (4C3)





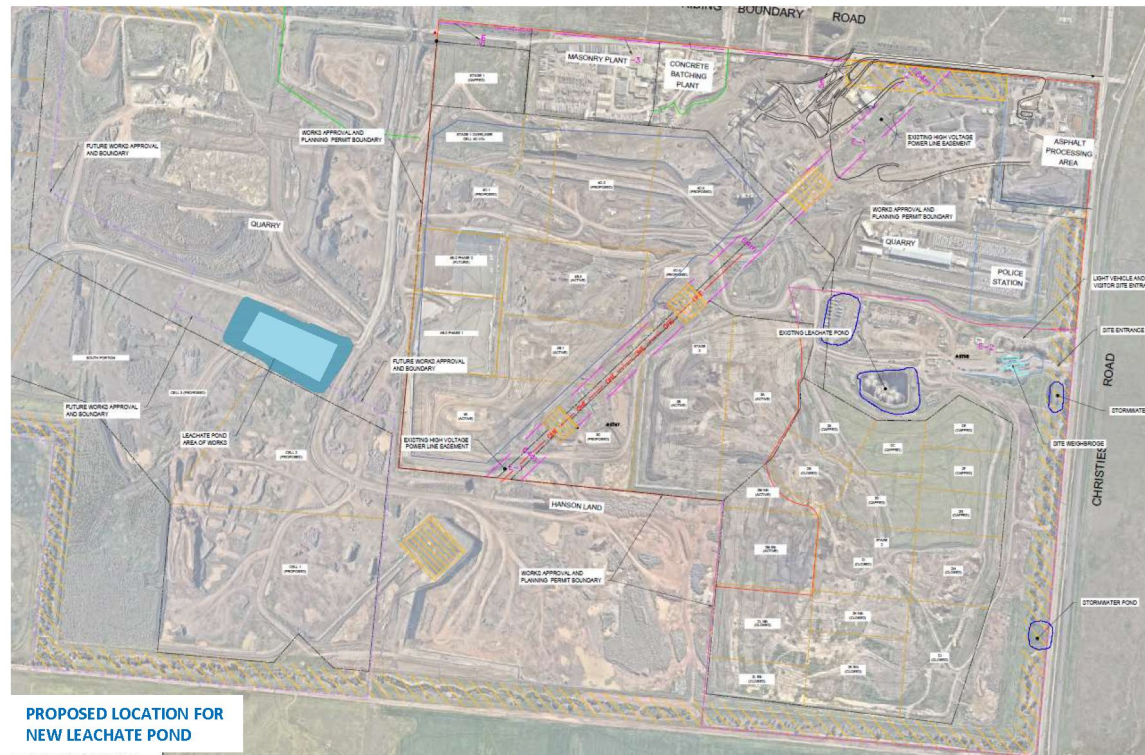
### *Cell Liner (final product)*





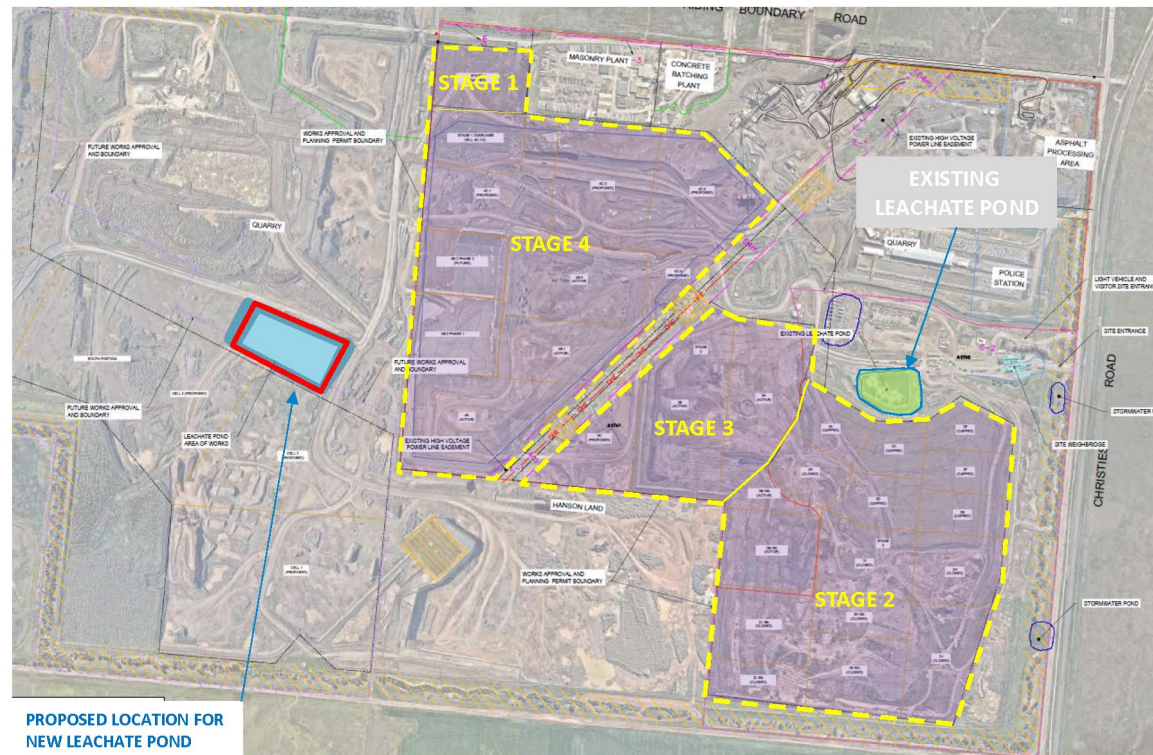
## Proposed Leachate Pond

*New leachate pond pending Planning Permit Application was rejected following Counselor's vote despite Council Planning Department supporting the application from a technical and needs front.*



## MRL Site Overview

Current Licence Area = 120 Ha      Landfill Type: 2      Throughput: 1.8-2.0M tpa      Construction pace: 10-15 Ha/yr





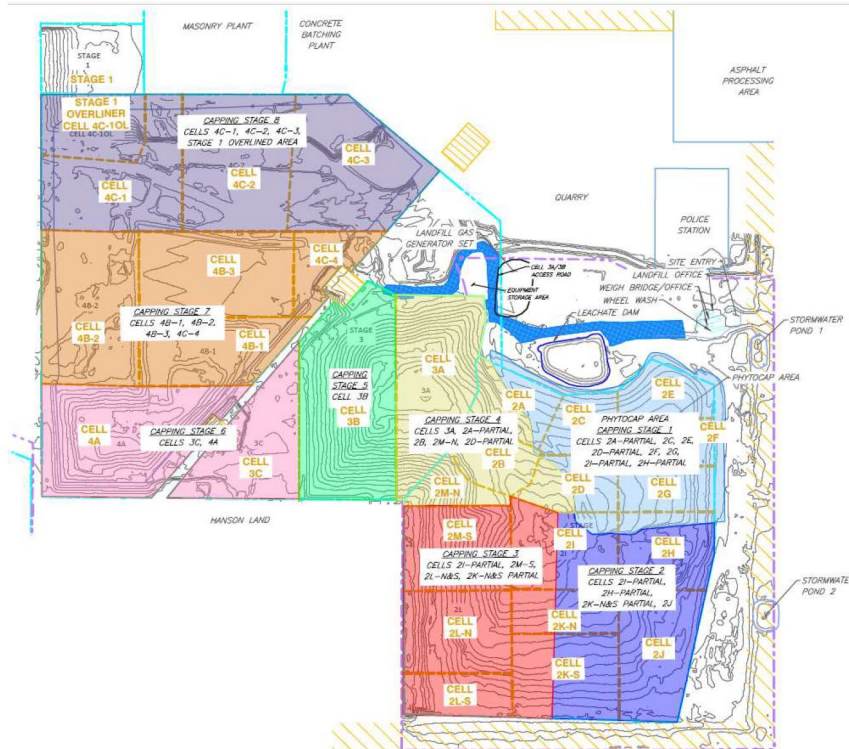
## *Distance to sensitive receptors*



- Closest receptor southwest 800m
- Distance to Mt Atkinson 2,350m
- Distance to Prison 2,200m
- Distance to Caroline springs 3,800m

## Landfill Remediation Update

### Rehabilitation Plan



- Phyto cap trial is still in progress and due for completion in May 2021
- Early works currently taking place in preparation for future capping is the installation of additional LFG infrastructure (stage 2/3 and stage 3/4)
- 13 leachate bores to be re-drilled in accordance with PAN – Complete
- Interim capping has taken place over completed cells as best practice
- Capping works to commence in June and will occur continuously each year to construct 15Ha per phase as highlighted in areas (to the right)

## Cap Status and PC Dates

Percentage complete:

- REA Submitted and **Approved**
- Tender to be Awarded 28<sup>th</sup> May
- Subgrade works: 0%
- GCL/Geomembrane: 0%
- Geotextile Cushion: 0%
- Subsoil: 0%
- Topsoil: 0%

Key Milestones / Items	Stage 2 Cap
Practical Completion Date	TBC
Inclement Weather Allowance	TBC
Auditor Sign-off	TBC
EPA Approval	TBC
REA approved amount	\$9.9 million
FY22 Spend	\$6.7 Million







### **Home Safe**

*We take responsibility for our personal safety, as well as that of our team. We are committed to Goal Zero, because everyone deserves to go Home Safe, every day.*



### **Stronger Together**

*Building from a place of strength, we are focused on creating something stronger than the sum of our parts each and every day.*



### **Integrity**

*We do the right thing – no matter what. Holding ourselves to higher standards, we say what we mean, and we do what we say.*



### **We Make A Difference**

*We are proud of what we do to make a sustainable future possible – for our employees, our customers, our investors, the communities in which we work, and the planet.*

## Attachment 3 – EPA presentation



# MRL CRG meeting EPA update

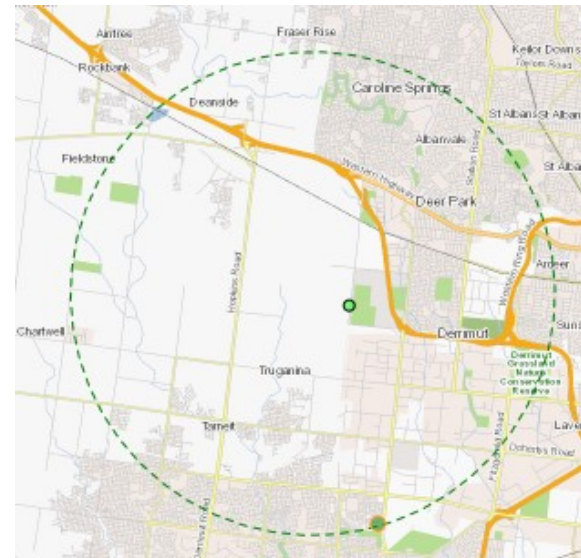
20 May 2021

John Downing – Senior Environment Protection Officer

Western Metropolitan Region

## Odour reports March to May 2021

- One odour report alleging Landfill Operations Pty Ltd as the source in the past three months
- 7km radius, reporter approximately 7km away from landfill, well in exceedance of odour detection radius, inconsistent description with odours generated at MRL (reported chemical odour)







## Compliance and Enforcement update

- EPA continues to regulate MRL to prevent risk of harm to human health and the environment. EPA conducts on-going monthly unannounced compliance inspections, supported by drone surveys between inspections to monitor tipping face compliance
- EPA's expectation is that the site must be managed according to existing laws, regulations and MRL's licence conditions, and takes any breaches of non-compliances with licence conditions seriously
- When Victoria's amended environment protection laws come into force on 1 July, EPA will have enhanced powers. We'll use these powers to prevent risks to the environment and human health. We'll also be able to issue stronger sanctions and penalties to hold environmental polluters to account
- EPA is continuing to regulate Cleanaway sites to address compliance issues across Victoria. EPA has set clear expectation with Cleanaway to bring their operations up to expected standards and in compliance with its EPA licence



## Compliance and Enforcement update

- EPA completed a Major Industries Assessment (MIA), which outlines 59 recommendations and 18 requirements to improve MRL's management of risks to the environment and human health. EPA will issue remedial notices and fines for non-compliances with MRL's licence and the EP Act.
- 5 remedial notices issued as a result of the MIA, 4 in draft or on hold
- No sanctions issued in the past three months; however, a number of non-compliances were detected during the MIA which are under investigation



## EPA's regulatory role and the new laws

- EPA's priority is the prevention of harm to human health and our environment from pollution and waste.
- From 1 July 2021, EPA will have increased powers to prevent harm to public health and the environment from pollution and waste.
- We'll use these powers to prevent risks to the environment and human health. We'll also be able to issue stronger sanctions and penalties to hold environmental polluters to account.
- The general environmental duty (GED) is the centrepiece of Victoria's new environment protection laws. The GED applies to all Victorians. If you conduct activities that pose a risk to human health and the environment, you must understand those risks. You must also take reasonably practicable steps to eliminate or minimise them. In an Australian first, the GED is criminally enforceable



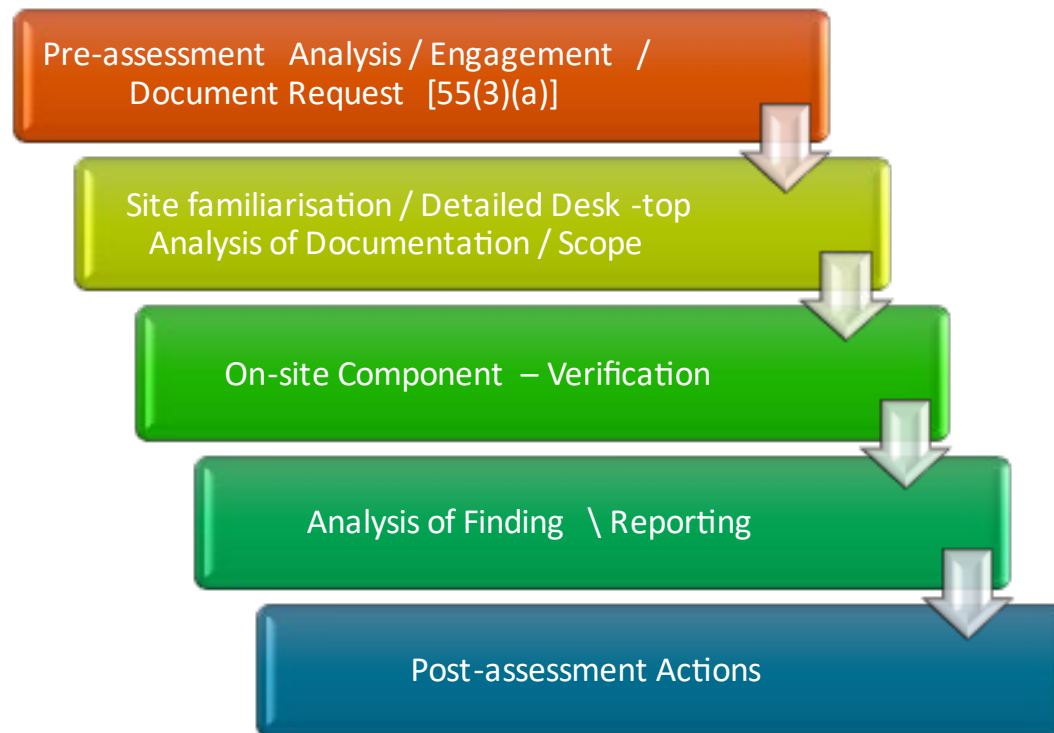
# Major Industries (MI) Assessment

20 May 2021

Peter Giang – Field Specialist

MI Team - Specialist Regulatory Services

## MI Assessment – Process



## MI Assessment - Scope

- **Environmental Management System (EMS)**
- **Asset Management System**
- **Surface/Stormwater**
- **Leachate**
- **Soil & Groundwater**
- **Odour Management**
- **Waste Acceptance and Management**
- **Landfill Gas (LFG) Management**

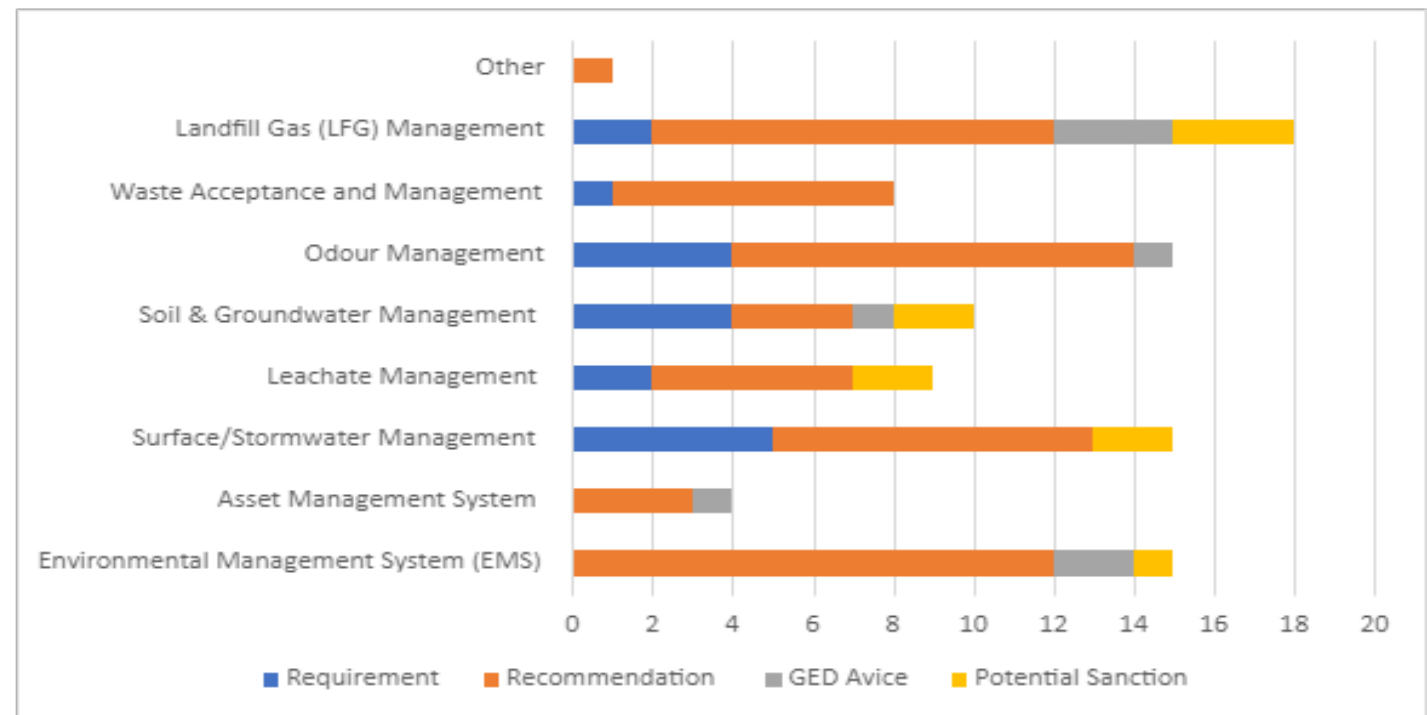


## MI Assessment - Outcomes

59 Recommendations

18 Requirements

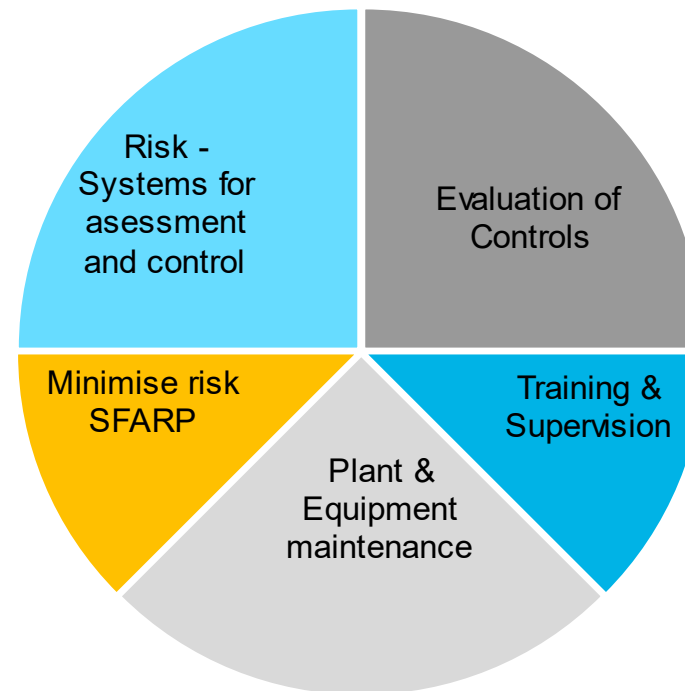
9 Remedial Notices



## MI Assessment – GED Advice

*“If you conduct activities that pose a risk to human health and the environment, you must understand those risks.*

*You must also take reasonably practicable steps to eliminate or minimise them”*







## Summary

Regulate Melbourne Regional Landfill (MRL) to prevent risk of harm to human health and the environment (GED).

Managed according to [existing laws and regulations](#) and EPA licence conditions

Operations meet expected standards and compliance with licence conditions.

Comply with Notices and adopt Recommendations



---

1300 372 842 (1300 EPA VIC)  
[epa.vic.gov.au](http://epa.vic.gov.au)



---

For languages other than English please call 131 450 or visit [epa.vic.gov.au/language](http://epa.vic.gov.au/language) for next steps.  
If you need assistance because of a hearing or speech impairment, please visit [epa.vic.gov.au](http://epa.vic.gov.au)

This publication is for general guidance only. You should obtain professional advice if you have any specific concern. EPA Victoria has made every reasonable effort to ensure accuracy at the time of publication.