



MRL CRG

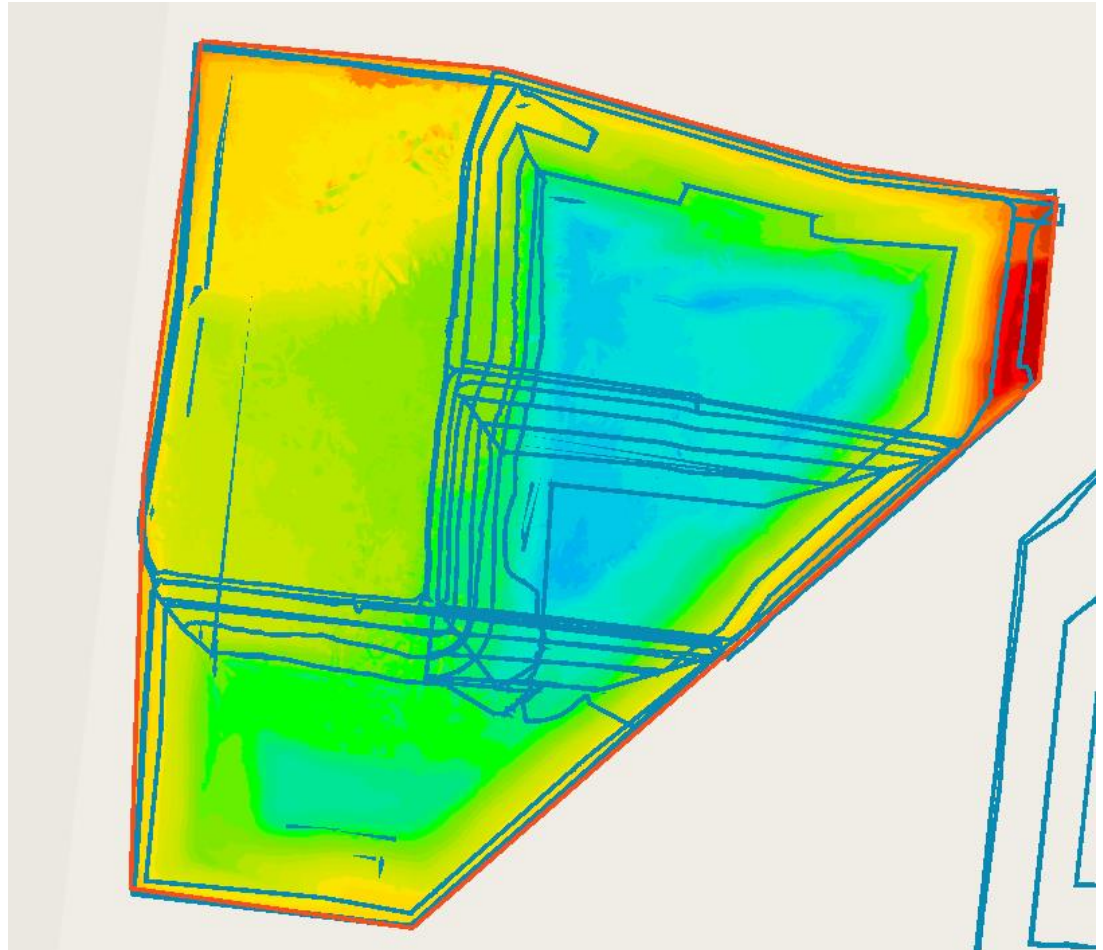
Cleanaway Update

20 August 2020

Operations Update

Fill progression – Finalising the lift 5 in stage 4

Elevation



Operations Update

Landfill Gas Collection Update



- The next phase of gas field infrastructure in stage 3 and 4 has commenced this month. There will be a header line extension and 21 vertical extraction wells installed in Cell 4A.
- Knock out pots will be installed which aid the with condensate management on-site.



Operations Update

Gas Plant Expansion

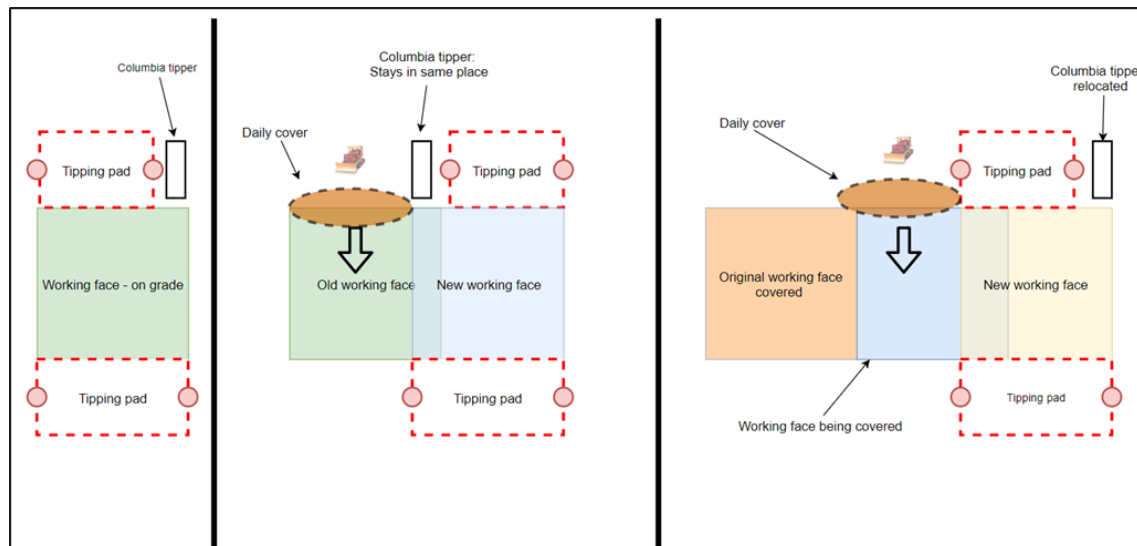
- Install 8 new landfill gas generator modules
- Double power generating capacity to 68,600MWh of electricity per year
- Mitigate over 220,000 tonnes of greenhouse gas emissions per year
- Approvals: Planning permit issued and Cleanaway working collaboratively with EPA towards a Work Approval



Operations Update

Working Face Management

- Management Plan in place
- Safety, Odour, Litter & Vermin
- Waste Compaction - life of landfill, odour reduction, settlement and stability
- Technology - (Visionlink and Propeller) – Field planning, compaction, Face size
- Weekly in house drone fly overs
- Daily odour inspections
- Face measurement - 3 times a day using handheld GPS



Operations Update

Litter Management and Filling Progression

- Currently filling in Cell 4A (lift 5) to capture the remaining airspace.
- Litter nets have been re-secured with metal clips along the base of the nets surrounding the active cell
- Will be raising the litter cages (first line of defense around the working face) to ensure maximum litter defense.



Leachate Redrills in Stage 2

Project summary:

- 13 wells to be installed.

Current status of works:

- The wells have all been successfully installed with both leachate and gas extraction.
- Gas extraction to main environmental control.
- Leachate is currently being drawn down in stage 2 and discharged into the site leachate pond for aeration.



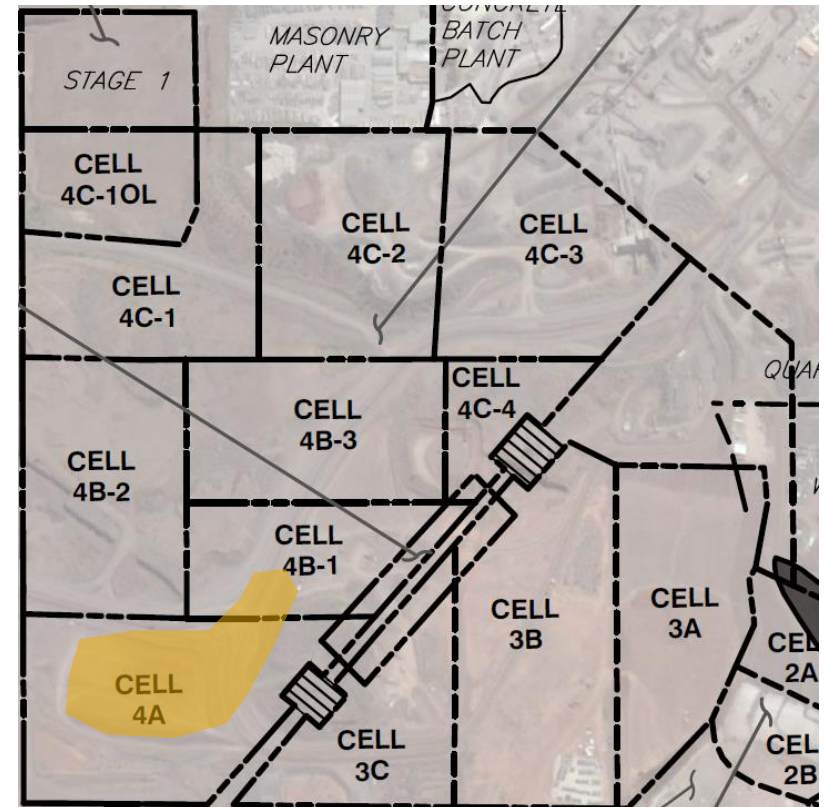
Operations Update

Stage 4

Currently finalizing (lift 5)

Whilst Licenced cells are 4A, 4B1, 4B2 and 4B3, this does not imply the operational area is spanning across the entire Stage 4 area.

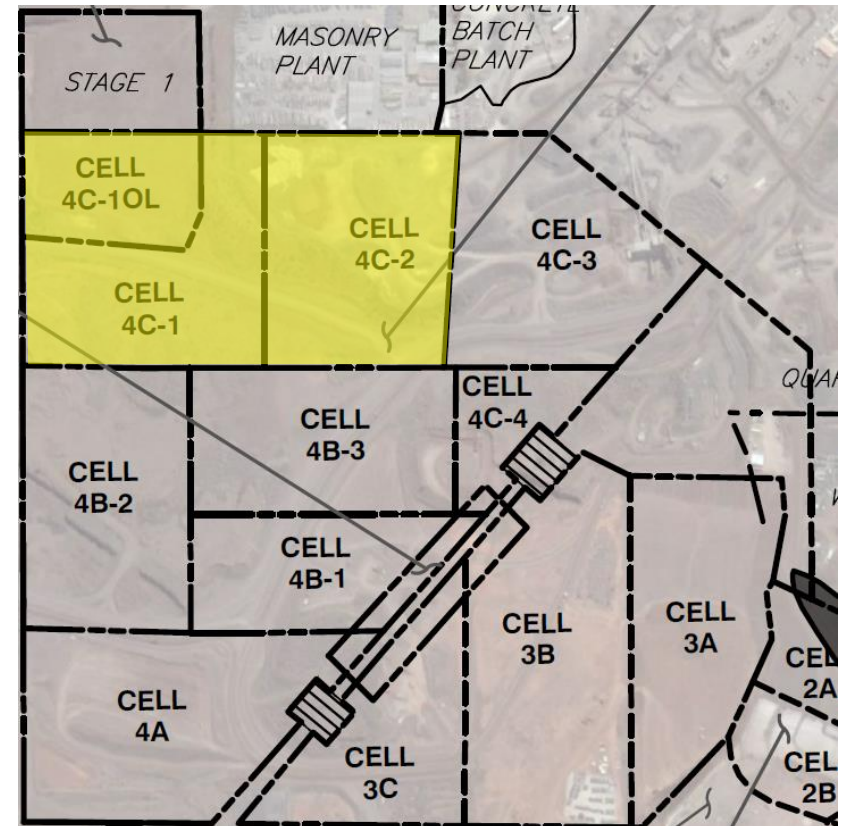
At any given day, a single operating face (maximum of two faces during peak times) is open within a dedicated area until the waste height has reached design level, then onto the next block and so on.



Operations Update

Current cells under Construction – Cell 4C1 and 4C-2

- Cell 4C1 due to come online late Aug
- Cell 4C2 due to come online Dec/Jan



Cell Status and PC Dates (4C1)

Shamrock works officially started 8th January 2020

Boral Land released was issued 20th December 2019

- Subgrade works: 100% complete
- Compacted Clay Liner: 100%
- GCL/Geomembrane: 100%
- Geotextile Cushion: 100%
- Leachate Drainage Aggregate: 100%
- Geotextile Filter: 100%

Key Milestones / Items	Cell 4C1
Practical Completion Date	25-May-20
Inclement Weather Allowance	25-Jun-20
Auditor Sign-off	01-July-20
EPA Approval	28-August-20
Airspace reached by:	31-December-20
Airspace Buffer (relative to 4C1 construction)	12 weeks



Cell Status and PC Dates (4C2)

Shamrock works officially started 23rd April 2020

- Subgrade works: 100% complete
- Compacted Clay Liner: 90%
- GCL/Geomembrane: 30%
- Geotextile Cushion: 30%
- Leachate Drainage Aggregate: 0%
- Geotextile Filter: 0%

Key Milestones / Items	Cell 4C1
Practical Completion Date	01-Nov-20
Inclement Weather Allowance	01-Dec-20
Auditor Sign-off	07-Dec-20
EPA Approval	10-Jan-20
Airspace reached by:	01-Jul-21
Airspace Buffer (relative to 4C1 construction)	6 months



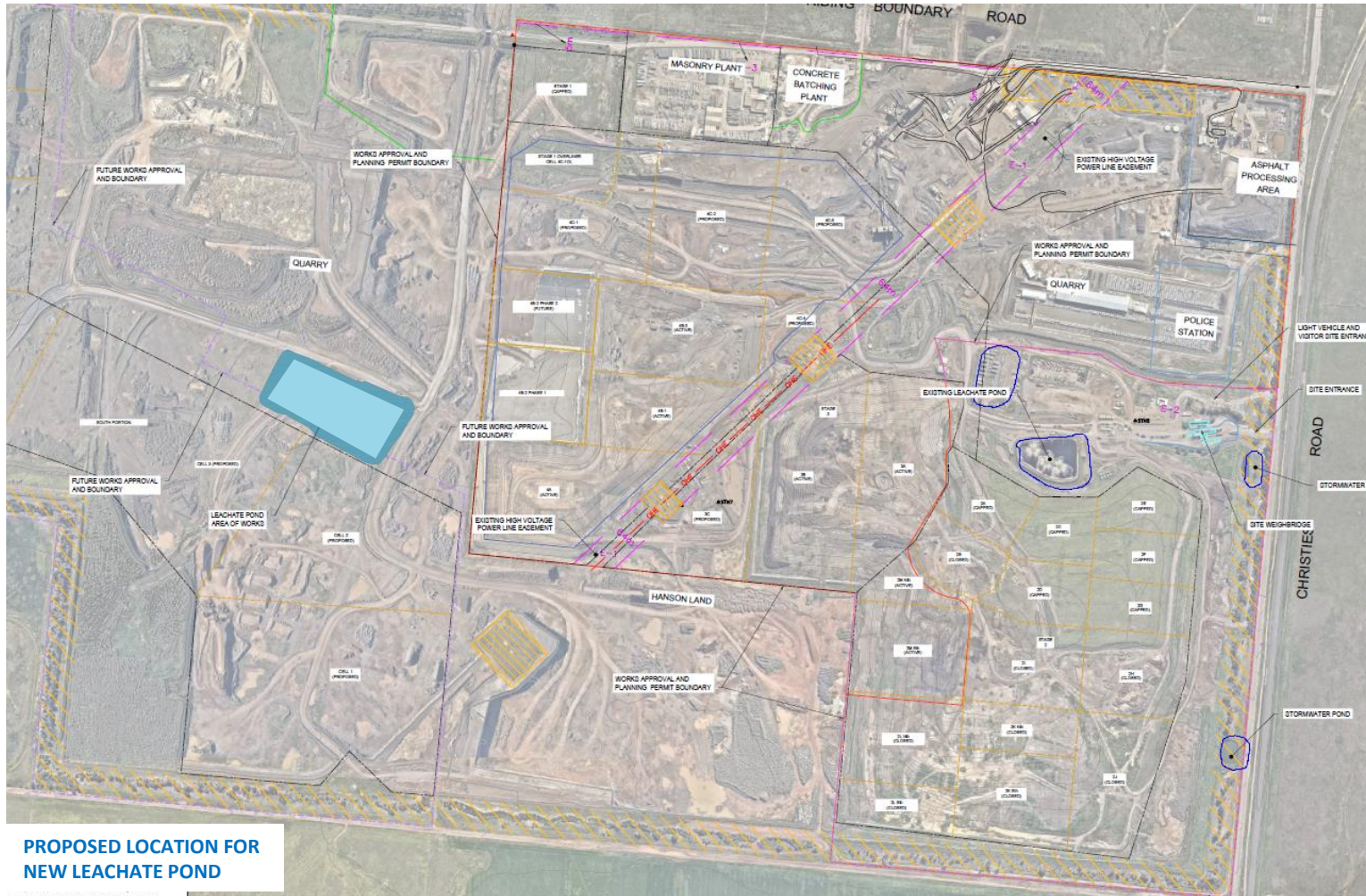
Cell Status and PC Dates (4C1 and 4C2)



Aerial image taken of Cell 4C 1 and 4C2 (August 2020)

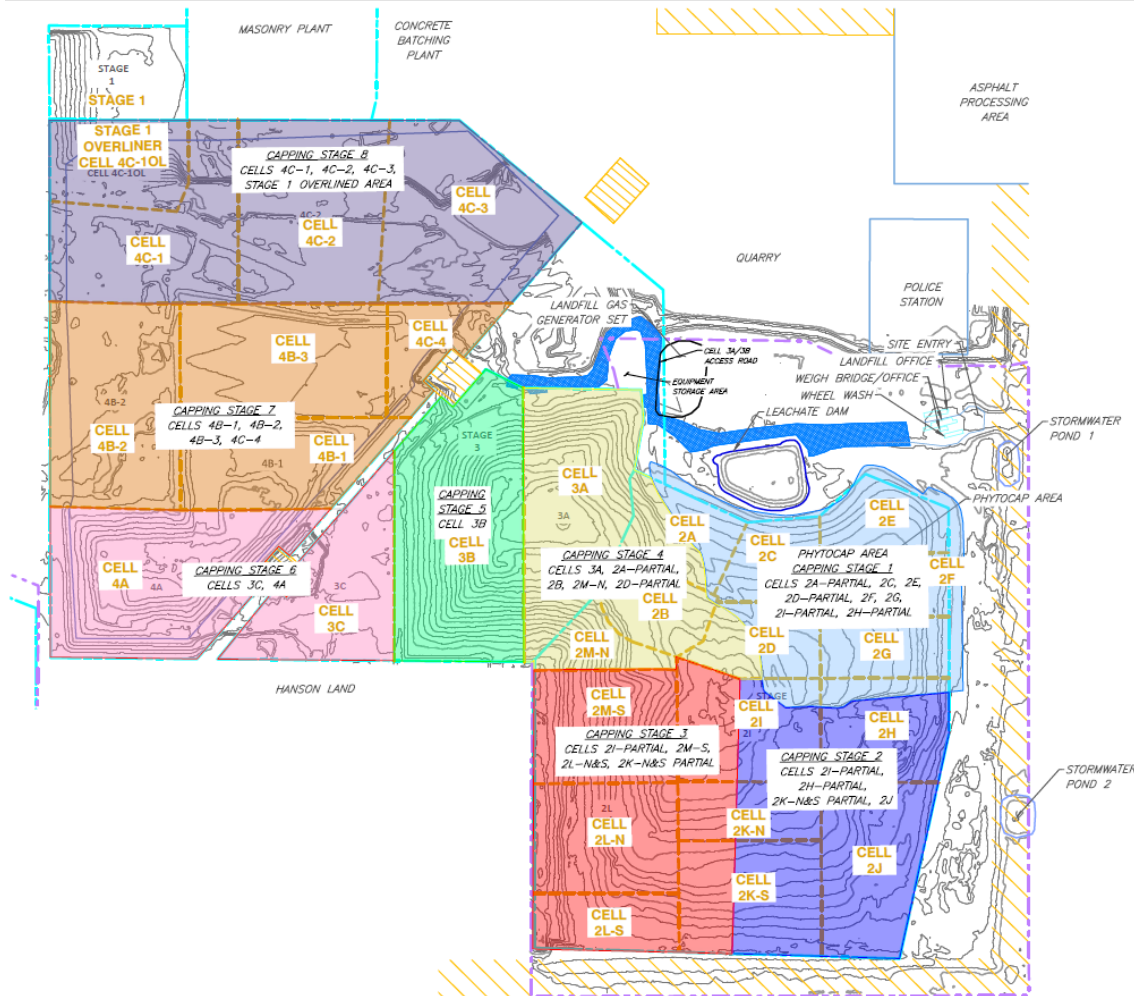
Proposed Leachate Pond

New leachate pond construction is pending Planning Permit Application with Council. Likely to start construction early 2021



Operations Update

Rehabilitation Plan



- Phyto cap trial is still in progress and due for completion in May 2021
- Early works currently taking place in preparation for future capping is the installation of additional LFG infrastructure (stage 2/3 and stage 3/4) and compliance with the Leachate Redrill (PAN)
- 13 leachate bores to be re-drilled in accordance with PAN – Complete
- Interim capping has taken place over completed cells as best practice
- Once the trial is approved, capping works will occur continuously in approximately 15Ha phases per hatched areas shown



Home Safe

We take responsibility for our personal safety, as well as that of our team. We are committed to Goal Zero, because everyone deserves to go Home Safe, every day.



Stronger Together

Building from a place of strength, we are focused on creating something stronger than the sum of our parts each and every day.



Integrity

We do the right thing – no matter what. Holding ourselves to higher standards, we say what we mean, and we do what we say.



We Make A Difference

We are proud of what we do to make a sustainable future possible – for our employees, our customers, our investors, the communities in which we work, and the planet.