



MRL CRG

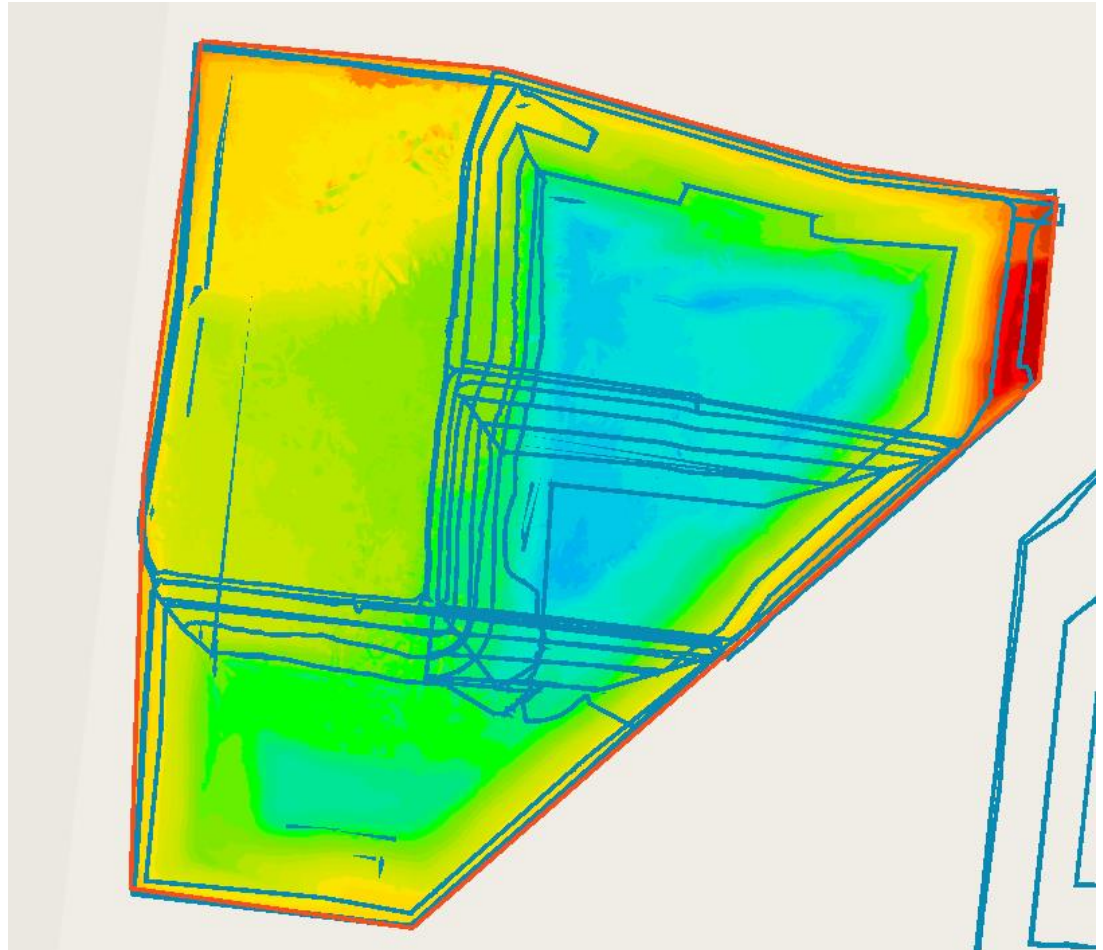
Cleanaway Update

21 May 2020

Operations Update

Fill progression – 4B-2 (Lift 4) is now 50% complete

Elevation



Operations Update

Landfill Gas Collection Update



- The 40 new vertical extraction gas wells completed in November and have been online for 6 months (stage 2/3)
- Four knock out pots installed which aid the with condensate management on-site
- Currently in the design review stages of the next phase of gas field infrastructure in stage 3 and 4 – will be a header line extensions and 30 vertical extraction wells installed with works to commence approx. 30 June



Operations Update

Gas Plant Expansion

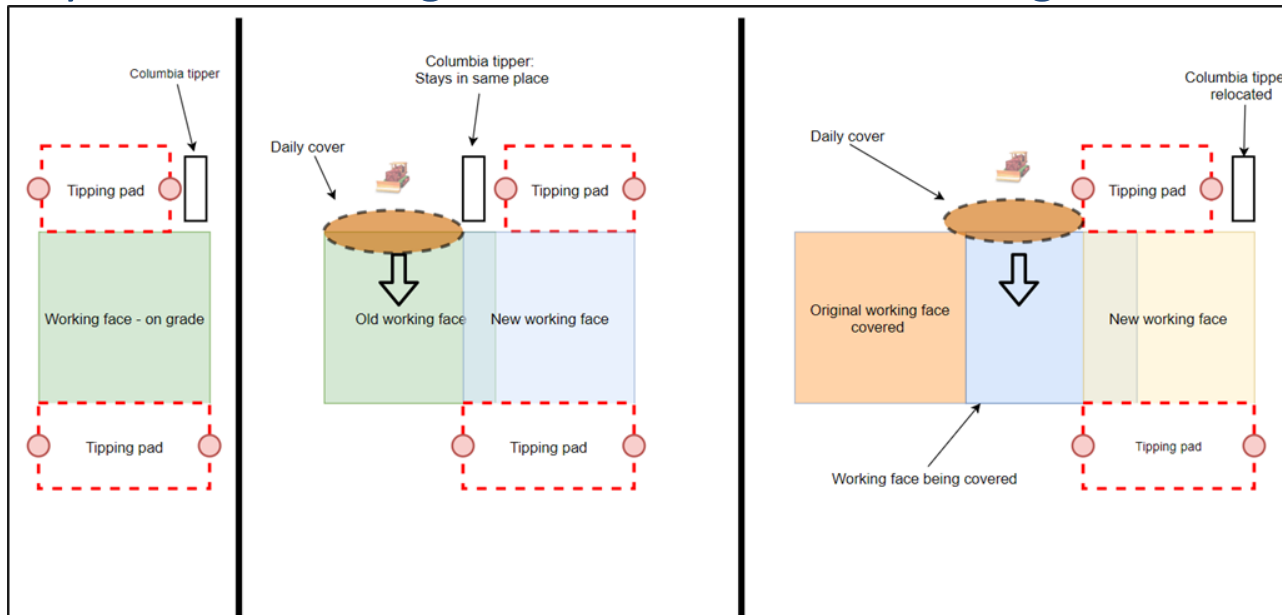
- Install 8 new landfill gas generator modules
- Double power generating capacity to 68,600MWh of electricity per year
- Mitigate over 220,000 tonnes of greenhouse gas emissions per year
- Expansion to be conducted in two stages:
 - 4 generators planned to be purchased in June 2020 and operational in June 2021.
 - Remaining 4 generators approx. 2 years later.
- Generators to be located alongside the existing facility.



Operations Update

Working Face Management Plan

- Key Objectives – Safety, Odour, Litter & Vermin
- Waste Compaction - life of landfill, odour reduction, settlement and stability
- Technology - (Visionlink and Propeller) – Field planning, compaction, Face size
- Face measurement - 3 times a day using handheld GPS
- Odour surveys and complaint response
- Boundary dust monitoring – Two rounds of monitoring conducted so far



Operations Update

Litter nets, and capping

- Currently filling in Cell 4B-2 (lift 4) and bales being stacked at the top of Cell 4B-3. Bales are surrounded by a bunded wall
- Litter nets have been re-secured with metal clips along the base of the nets surrounding the active cell
- 12 m perimeter nets installed along the southern boundary of site



Leachate Redrills in Stage 2

Project summary:

- 13 wells to be reinstated

Current status of works:

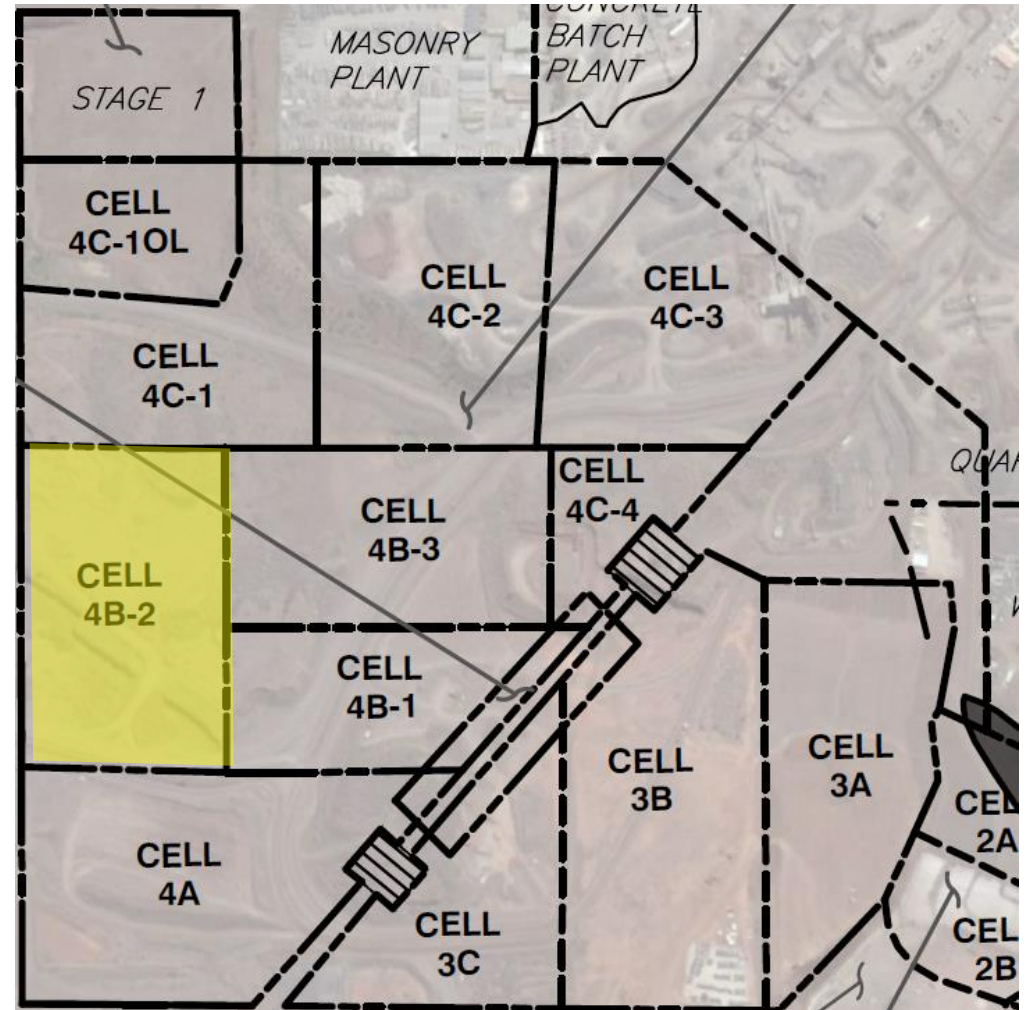
- Drilling to commence Wednesday 20st May 2020
- Resolve Environmental have been awarded the works
- Works on track to finish 1st July 2020



Operations Update

Cell 4B2 Cell Completed

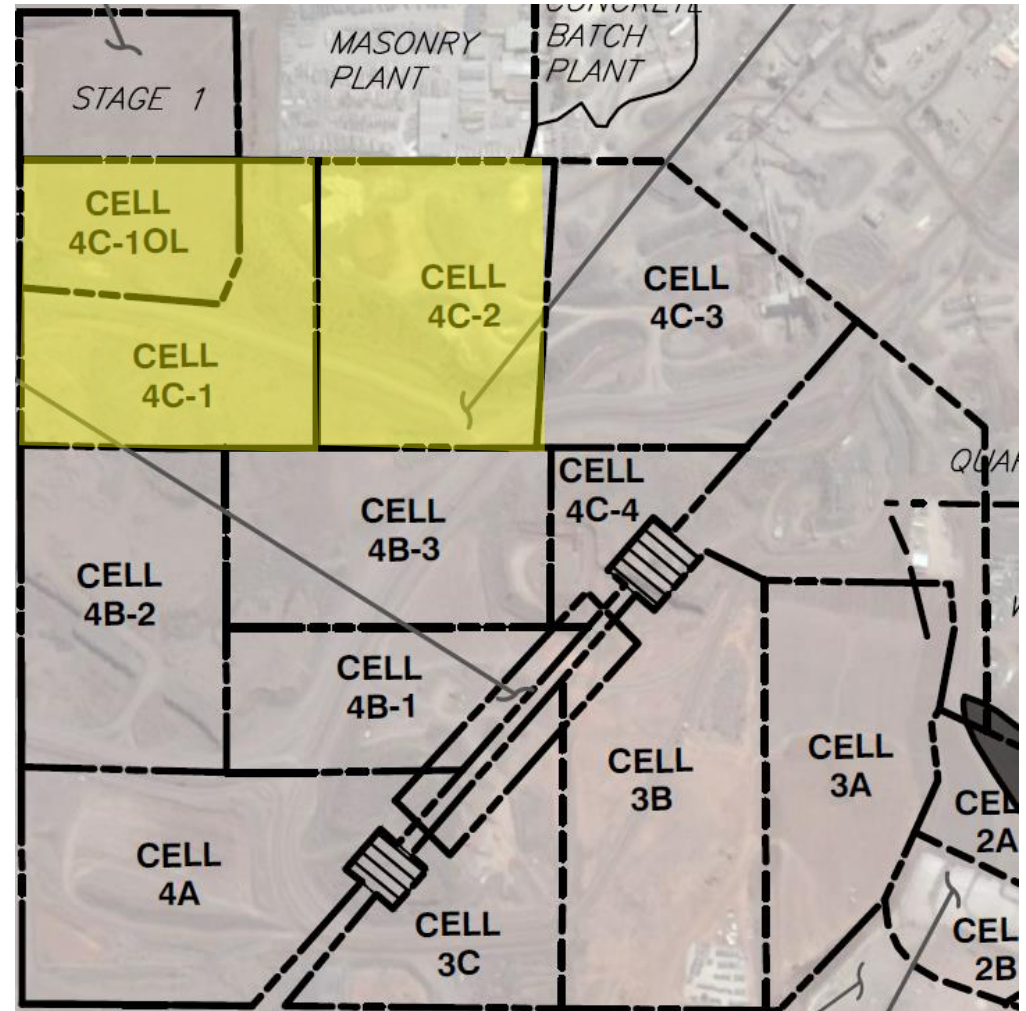
Currently filling (lift 4)



Operations Update

Current cells under Construction – Cell 4C1 and 4C-2

- Cell 4C1 due to come online Jul/Aug
- Cell 4C2 due to come online Dec/Jan



Cell Status and PC Dates (4C1)

Shamrock works officially started 8th January 2020
Boral Land released was issued 20th December 2019

- Subgrade works: 100% complete
- Compacted Clay Liner: 100%
- GCL/Geomembrane: 85%
- Geotextile Cushion: 60%
- Leachate Drainage Aggregate: pending
- Geotextile Filter: pending

Key Milestones / Items	Cell 4C1
Practical Completion Date	25-May-20
Inclement Weather Allowance	25-Jun-20
Auditor Sign-off	01-July-20
EPA Approval	01-August-20
Airspace reached by:	15-Oct-20
Airspace Buffer (relative to 4C1 construction)	10 weeks



Cell Status and PC Dates (4C2)

Shamrock works officially started 23rd April 2020

- Subgrade works: 90% complete
- Compacted Clay Liner: 0%
- GCL/Geomembrane: 0%
- Geotextile Cushion: 0%
- Leachate Drainage Aggregate: 0%
- Geotextile Filter: 0%

Key Milestones / Items	Cell 4C1
Practical Completion Date	01-Nov-20
Inclement Weather Allowance	01-Dec-20
Auditor Sign-off	07-Dec-20
EPA Approval	10-Jan-20
Airspace reached by:	01-Jul-21
Airspace Buffer (relative to 4C1 construction)	6 months



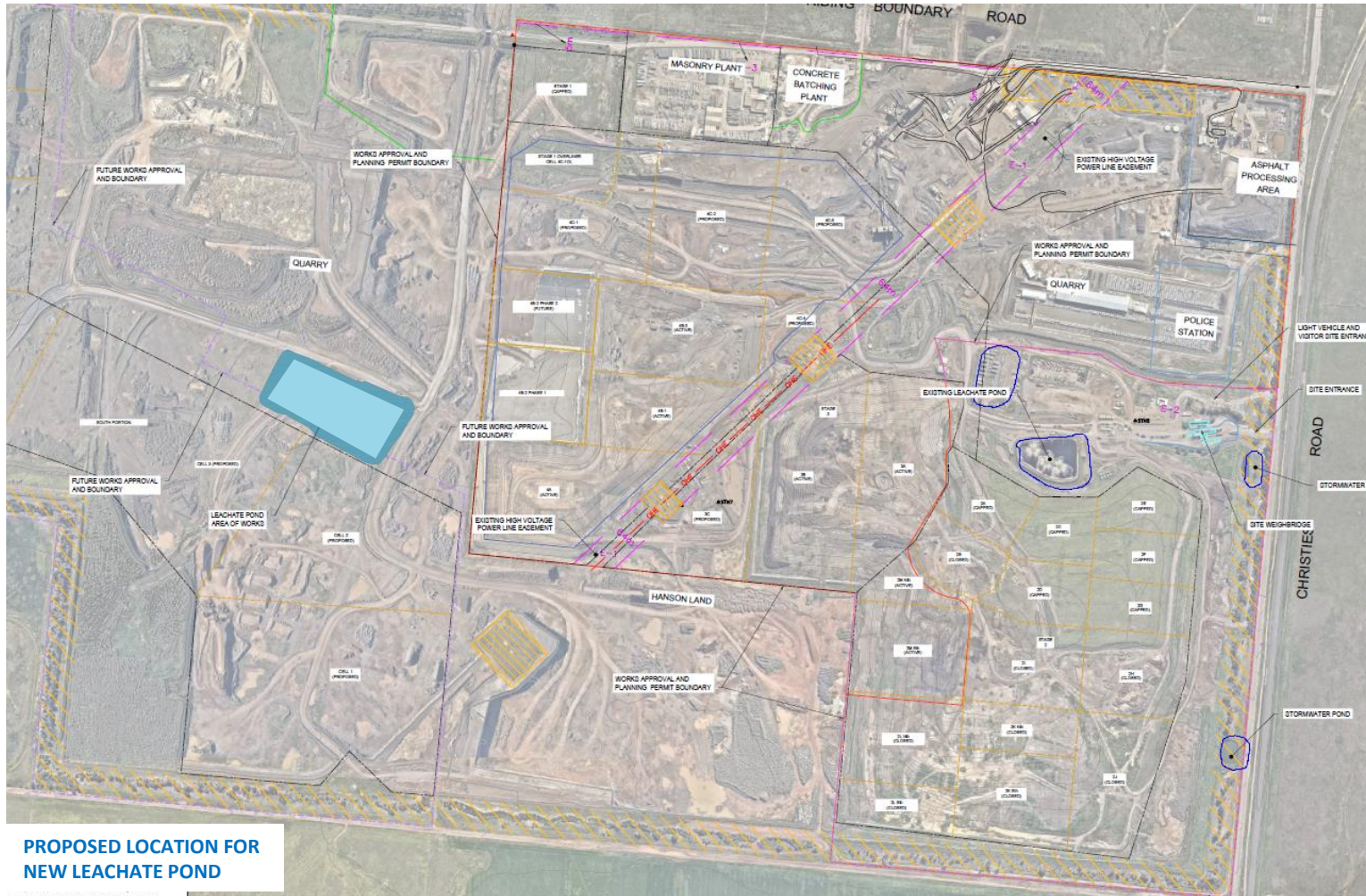
Cell Status and PC Dates (4C1)



Aerial image taken of Cell 4C 1 and 4C2 on Friday 15th May 2020

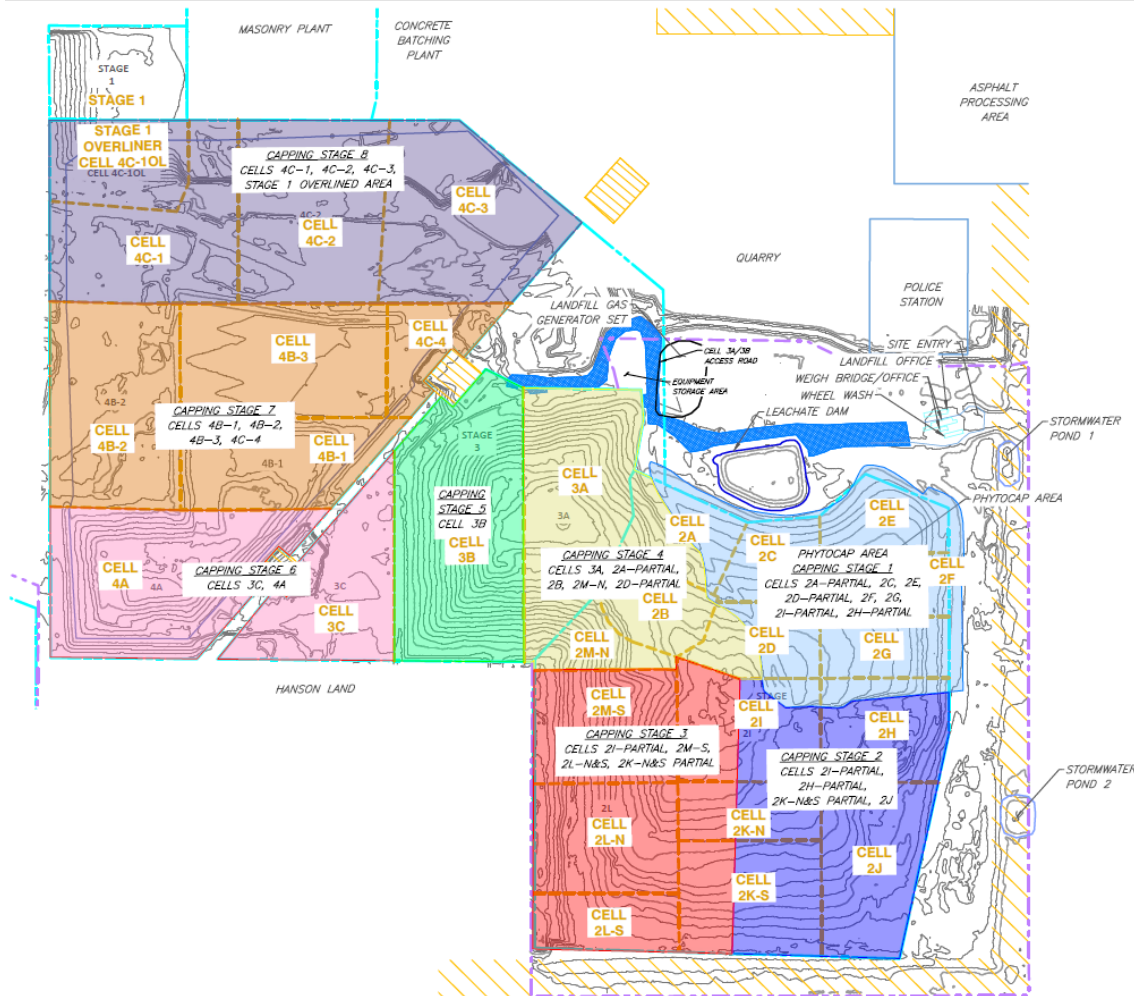
Leachate Pond

New leachate pond construction is pending review by EPA and Council for new area outside current landfill footprint



Operations Update

Rehabilitation Plan



- Phyto cap trial is still in progress and due for completion in May 2021
- Early works currently taking place in preparation for future capping is the installation of additional LFG infrastructure (stage 2/3 and stage 3/4) and compliance with the Leachate Redrill (PAN)
- 13 leachate bores to be re-drilled in accordance with PAN – to commence beginning of June
- Interim capping has taken place over completed cells as best practice
- Once the trial is approved, capping works will occur continuously in approximately 15Ha phases per hatched areas shown



Home Safe

We take responsibility for our personal safety, as well as that of our team. We are committed to Goal Zero, because everyone deserves to go Home Safe, every day.



Stronger Together

Building from a place of strength, we are focused on creating something stronger than the sum of our parts each and every day.



Integrity

We do the right thing – no matter what. Holding ourselves to higher standards, we say what we mean, and we do what we say.



We Make A Difference

We are proud of what we do to make a sustainable future possible – for our employees, our customers, our investors, the communities in which we work, and the planet.