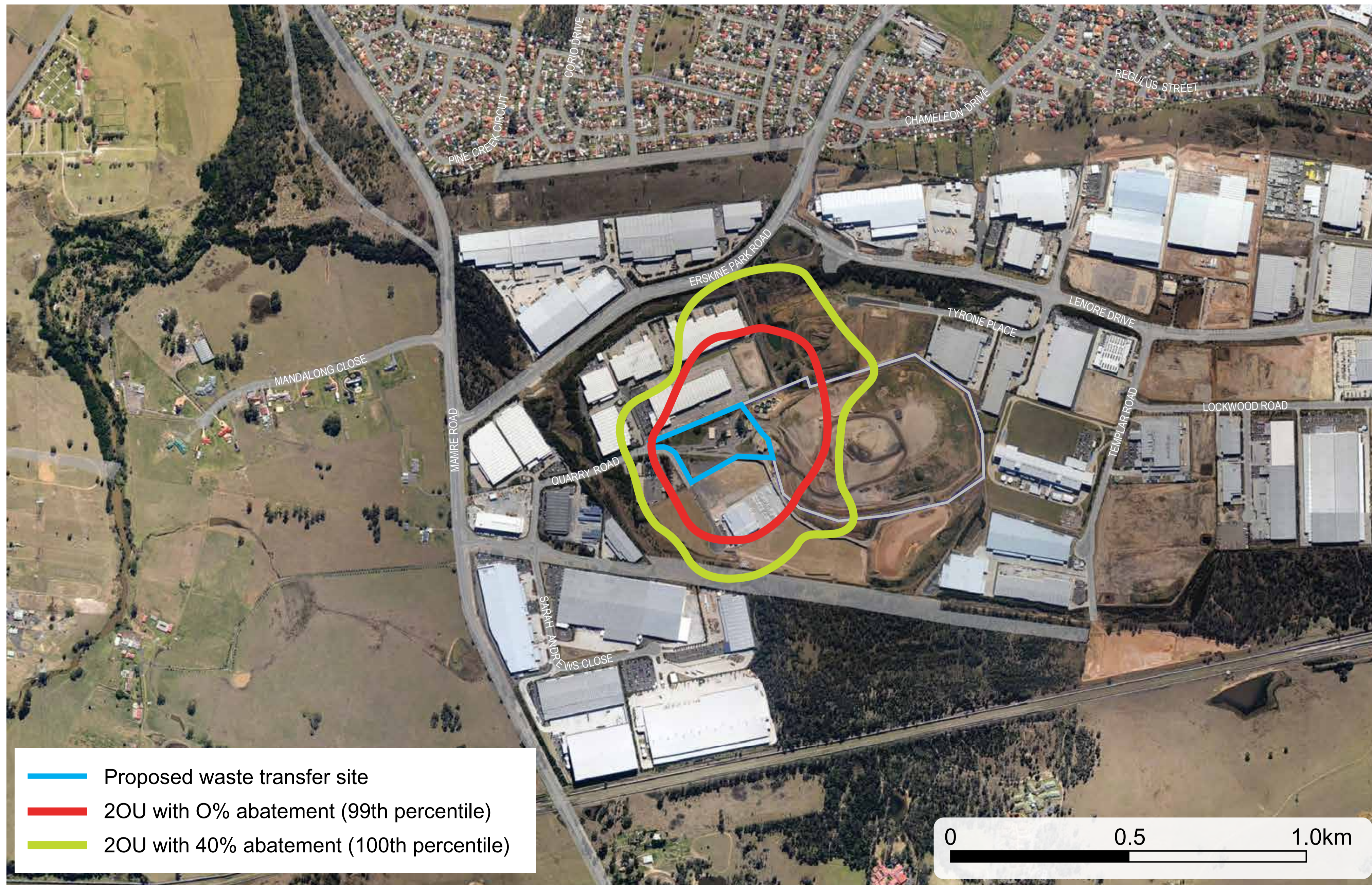


# Connecting with communities

## Proposed Resource Management Facility at Erskine Park

### Odour Management System Design – contour map



The **red line** indicates the extent of odour concentrations when assessed against the 'compliance standard'. This standard allows for odour concentrations to be above criterion for a number of hours each year.

The **green line** indicates the extent of odour concentrations when assessed against the 'design standard'. This standard does not allow for odour concentrations to be above criterion for any hours in the year.

If you would like more information, or to receive project updates, you can:

Call: 1800 295 269

Email: [erskine-park@cleanaway.com.au](mailto:erskine-park@cleanaway.com.au)

Write to: Erskine Park Transfer Facility, PO Box 804, St Marys NSW 1790

Visit the website: [www.transpacific.com.au/erskine-park](http://www.transpacific.com.au/erskine-park)